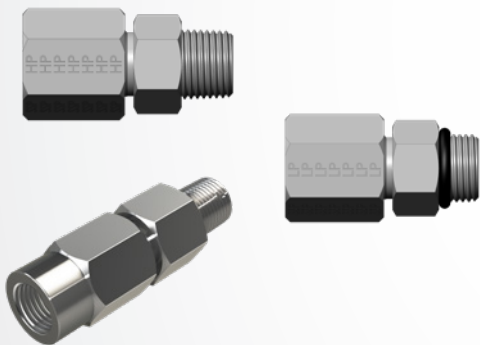


Atmospheric Rupture Assembly



Atmospheric Rupture Assemblies are used to signal excessive pressure in a system. The assemblies contain an aluminum disc which ruptures at a predetermined pressure, venting the lubricant to atmosphere.

The thickness of the metal disc determines the pressure at which the assembly ruptures. Discs are color coded to indicate relieving pressures.

CPI, part of the Howden group, offers full Rupture indicator Assemblies, components, as well as replacement Rupture Discs to help keep your system operating safely.

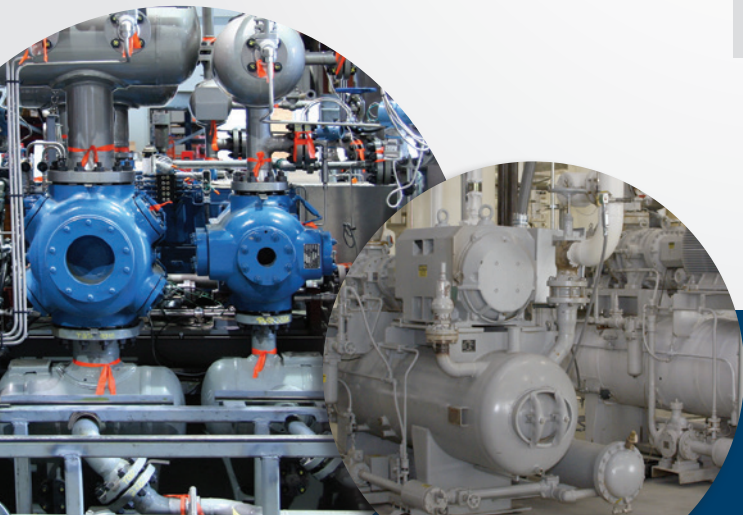
Note: The CPI POPR™ valve (Pop Open Pressure Relief) is a more reliable, cleaner, and safer device than the Atmospheric Rupture Assembly.

TECHNICAL SPECIFICATIONS

Inlet: 1/8" NPT Male/ 1/8" CPI ORB

Outlet: 1/8" NPT Female (with return cap only)

Cap Torque: 36 in. lbs. (4.1 NM)



Rupture Indicator Assembly: 1/8" NPT, Low Pressure, disc included

PART NO.	ORIFICE	RETURN	PRESSURE RATING	DISC COLOR
650050919220900	.250" DIA	No	900 PSI (62 BAR)	Black
650050919221175	.250" DIA	No	1,100 PSI (76 BAR)	Green
650050919221450	.250" DIA	No	1,450 PSI (100 BAR)	Yellow
650050919221750	.250" DIA	No	1,750 PSI (121 BAR)	Red
650050919222050	.250" DIA	No	2,050 PSI (141 BAR)	Orange
650050919222350	.250" DIA	No	2,350 PSI (162 BAR)	Aluminum
650050919222950	.250" DIA	No	2,950 PSI (203 BAR)	Blue
650050919223250	.250" DIA	No	3,250 PSI (224 BAR)	Purple
650050906390900	.250" DIA	Yes	900 PSI (62 BAR)	Black
650050906391175	.250" DIA	Yes	1,100 PSI (76 BAR)	Green
650050906391450	.250" DIA	Yes	1,450 PSI (100 BAR)	Yellow
650050906391750	.250" DIA	Yes	1,750 PSI (121 BAR)	Red
650050906392050	.250" DIA	Yes	2,050 PSI (141 BAR)	Orange
650050906392350	.250" DIA	Yes	2,350 PSI (162 BAR)	Aluminum
650050906392950	.250" DIA	Yes	2,950 PSI (203 BAR)	Blue
650050906393250	.250" DIA	Yes	3,250 PSI (224 BAR)	Purple

Rupture Indicator Assembly: 1/8" CPI ORB, Low Pressure, disc included

PART NO.	ORIFICE	RETURN	PRESSURE RATING	DISC COLOR
650050955081450	.250" DIA	No	1,450 PSI (100 BAR)	Yellow
650050955083250	.250" DIA	No	3,250 PSI (224 BAR)	Purple

Rupture Indicator Assembly: 1/8" NPT, High Pressure, disc included

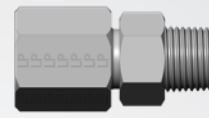
PART NO.	ORIFICE	RETURN	RELIEF PRESSURE	DISC COLOR
650050919223750	.125" DIA	No	3,750 PSI (259 BAR)	Yellow
650050919224600	.125" DIA	No	4,600 PSI (317 BAR)	Red
650050919225500	.125" DIA	No	5,500 PSI (379 BAR)	Orange
650050919226400	.125" DIA	No	6,400 PSI (441 BAR)	Aluminum
650050906393750	.125" DIA	Yes	3,750 PSI (259 BAR)	Yellow
650050906394600	.125" DIA	Yes	4,600 PSI (317 BAR)	Red
650050906395500	.125" DIA	Yes	5,500 PSI (379 BAR)	Orange
650050906396400	.125" DIA	Yes	6,400 PSI (441 BAR)	Aluminum

Rupture Indicator Assembly: 1/8" CPI ORB, High Pressure, disc included

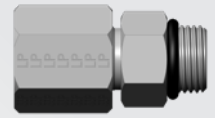
PART NO.	ORIFICE	RETURN	PRESSURE RATING	DISC COLOR
650050955085500	.125" DIA	No	5,500 PSI (379 BAR)	Orange

Rupture Indicator Components - Rupture disc NOT included

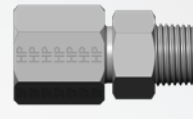
PART NO.	DESCRIPTION
650050000RFBNPT	Rupture Indicator Body, 1/8" NPT, No Return, Low & High Pressure
650050000RFCLP	Low Pressure Cap, .250" DIA. Orifice
650050000RFCHP	High Pressure Cap, .125" DIA. Orifice
650050000090548	Rupture Indicator Body, 1/8" NPT with Low Pressure Cap, No Return
650050000090499	Rupture Indicator Body, 1/8" NPT with High Pressure Cap, No Return
650050000090639	Rupture Indicator Body, 1/8" NPT with Low Pressure Return Cap, .250" DIA. Orifice
650050000094717	Rupture Indicator Body with High Pressure Return Cap, .125" DIA. Orifice
650050000RFBOR	Rupture Indicator Body, 1/8" ORB
650050000095513	Rupture Indicator body, 1/8 ORB with Low Pressure Cap
650050000095514	Rupture Indicator body, 1/8 ORB with High Pressure Cap



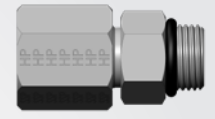
1/8" NPTM Low Pressure



1/8" CPI ORB Low Pressure



1/8" NPTM High Pressure



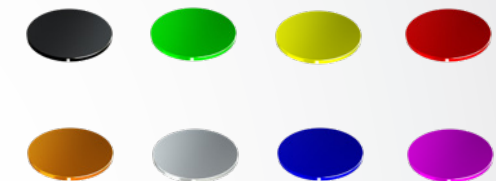
1/8" CPI ORB High Pressure



1/8" NPTM High Pressure



1/8" NPTM High Pressure



Rupture Disc Options

NOTE: Rupture Assembly with return redirects oil to supply or disposal area. Assemblies without return leaks oil out of system once the disc ruptures.

Rupture Disc Kits

PART NO.	QUANTITY	DISC COLOR
6500500002259BK	25	Black
6500500002259GN	25	Green
6500500002259YL	25	Yellow
6500500002259RD	25	Red
6500500002259OR	25	Orange
6500500002259AL	25	Aluminum
6500500002259BL	25	Blue
6500500002259PR	25	Purple



CPI, part of the Howden group, provides industry leading lubrication system products and services, partnering with our customers to develop individual solutions to their unique lubrication needs. From individual components to complete, turnkey systems, we can provide the resources and expertise to ensure your compressor operates at peak performance and longevity.