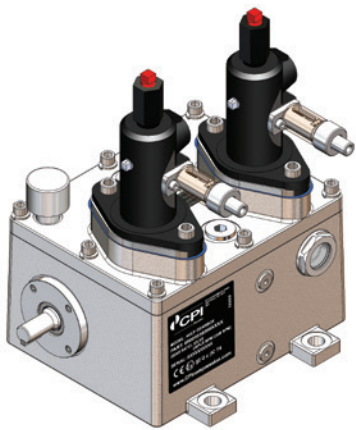




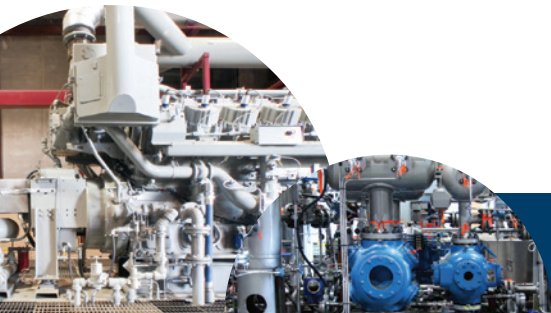
HVLP (High Volume Lubricator Pump)



The HVLP (High Volume Lubricator Pump) is designed to deliver precise quantities of lubrication oil to engines, compressors and other industrial applications.

The HVLP pump head is a high volume positive displacement pump designed to be mounted on CPI HVLP gearboxes as well as gearboxes from other manufacturers.

CE  2 Gc IIC T4



FEATURES

Lubricators

- Improved design and performance
- High precision shafts, bearings and gears
- Improved gaskets and o-ring seals for lubricator ports to prevent water ingress
- Improved lubricator drive shaft sealing to reduce oil leaks and seal failures
- Utilize dual fill ports and dual sight glass for ease of use
- Available with one or two pump heads

Pumps

- Available in 7mm and 10mm piston sizes
- Suitable for use with petroleum and synthetic lubricants
- Features adjustable flow rates

Product Options

- Desiccant breather to absorb internal moisture and extend gear oil life
- Pump cover to prevent water ingress and protect pump output adjustment mechanism – recommended for outdoor applications
- Anchor cross assembly

TECHNICAL SPECS

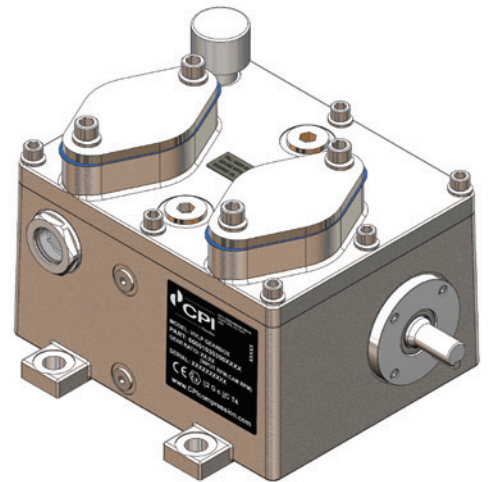
| | |
|---|---|
| PUMP SIZES | 7 mm plunger, 10 mm plunger |
| MAXIMUM OPERATING PRESSURE | 7 mm pump: 8,000 psi 10 mm pump: 3,500 psi |
| OIL VISCOSITY | 90 SUS–8,000 SUS |
| GEARBOX RATIOS (INPUT/DRIVE RPM:CAMSHAFT RPM) | 21.5:1, 7.7:1, 2.8:1, 2:1, 1:1, 1:2.8, 1:7.7 |
| PUMP OUTLET PORT: | 1/4" NPT |
| PUMP INLET PORT: | 3/8" NPT |
| PUMP STROKES PER MINUTE: | Minimum: 5 Maximum: 175 |
| GEARBOX OIL VOLUME | Approximately 1.5 qt (1420 ml) |
| RECOMMENDED GEAR-BOX OIL | 90W gear oil |
| TEMPERATURE | -20°F to 190°F (-29°C to 88°C) |

The HVLP is certified to   2 G c IIC T4

MODELS

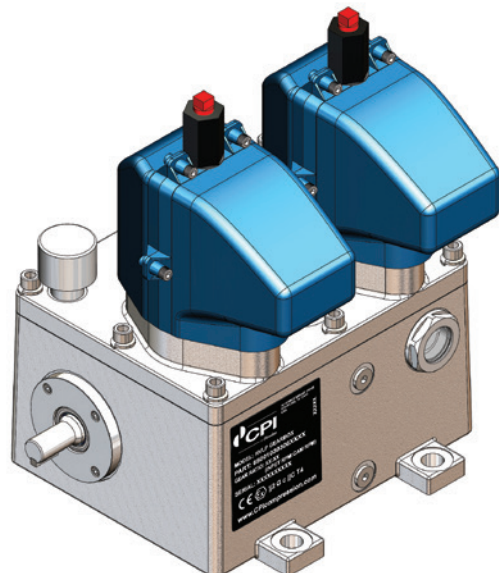
HVLP Gearbox Models

| CPI Part Number | Drive RPM: Cam RPM | Right Hand (RH) or Left Hand (LH) |
|-----------------|-----------------------|--------------------------------------|
| 650010003030011 | 1:1 | RH |
| 650010003030021 | 2:1 | RH |
| 650010003030031 | 2.8:1 | RH |
| 650010003030081 | 7.7:1 | RH |
| 650010030300211 | 21.5:1 | RH |
| 650010003030013 | 1:2.8 | RH |
| 650010003030018 | 1:7.7 | RH |
| 650010003029911 | 1:1 | LH |
| 650010003029921 | 2:1 | LH |
| 650010003029931 | 2.8:1 | LH |
| 650010003029981 | 7.7:1 | LH |
| 650010030299211 | 21.5:1 | LH |
| 650010003029913 | 1:2.8 | LH |
| 650010003029918 | 1:7.7 | LH |



HVLP Accessories

| Part Number | Description |
|-----------------|--|
| 650140000094908 | HVLP pump cover assembly |
| 650050000094687 | HVLP desiccant breather 3/8" NPT x 4" tall |
| 650050000095308 | Anchor cross assembly w/3,250 PSI rupture indicator |
| 650050000095307 | Anchor cross assembly w/5,500 PSI rupture indicator |



MODELS

HVLP Pump Models

| CPI Part Number | Piston Size | MAWP | Description |
|-----------------|-------------|-----------|---|
| 650010000030328 | 7 mm | 8,000 psi | 7 mm pump head |
| 650010000030329 | 10 mm | 3,500 psi | 10 mm pump head |
| 650010000030321 | 7 mm | 8,000 psi | 7 mm pump head w/ anchor cross assembly |
| 650010000030322 | 10 mm | 3,500 psi | 10 mm pump head w/ anchor cross assembly |

