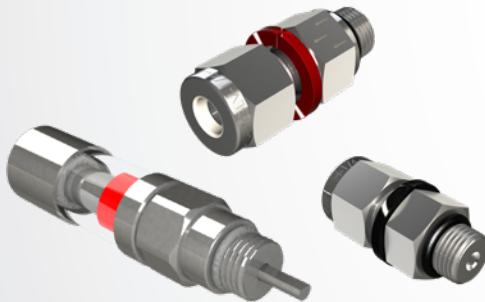


## DIVIDER BLOCK ACCESSORIES

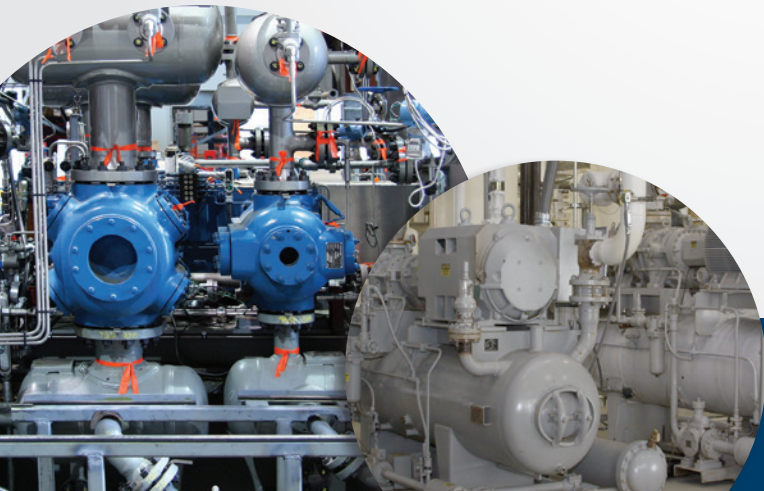
CPI, part of the Howden group, offers all the accessories necessary to get the most out of our divider blocks and to keep your compressor and lubrication system running at peak efficiency.



Our NEOMAG® visual cycle indicator tracks the divider block piston movement allowing you to monitor and control oil consumption, set proper lube rates and easily spot problems in the divider block system.

Spring Loaded Pressure Indicators (reset pin indicators) help you immediately locate high pressure points in the divider block or the location of a blocked tubing line in the divider block lubrication systems.

CPI also offers base plate check valves, base plate fittings and mounting brackets for your divider blocks.



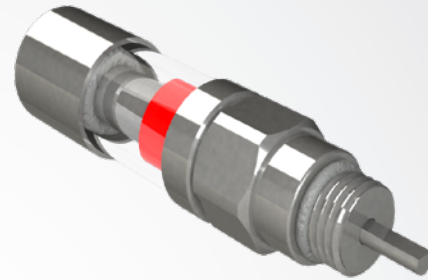
## NEOMAG® VISUAL CYCLE INDICATOR

The Neomag® cycle indicator follows the divider block piston movement so the operator can monitor and control oil consumption, set lube rates, and easily spot problems in the divider block system. Documenting the cycle times and determining the system cycle time pattern will always be the most accurate method of setting the correct lubrication flow rates.

See our Neomag® brochure for complete user instructions.

### FEATURES

- Works with CPI, DropsA, Graco, Sloan, Lincoln or equivalent brand divider blocks
- Available in three mounting configurations:
  - Trabon O-Ring Design
  - DropsA Metal Seal Design
  - Lincoln O-Ring Design
- Installs on any divider block element size\* without changing the rated output of the element
  - \* The exception is DropsA SMX size 04 elements, do not install on this element
- Uses stainless steel components with a polycarbonate viewing window housing reflective magnets to provide a visual indication of divider block operation
- Design is leak free and the viewing window will remain clear providing easy indicator visibility
- Pressure rating of 8000 psi (552 Bar)
- All hydraulic sealing O-Rings are AS-568-904 size, 90 durometer, fluorocarbon material (FKM)



Neomag® Visual Cycle Indicator

PART NO.	DIVIDER BLOCK TYPE
650050000000NMD	DropsA
650050000000NML	Lincoln
650050000000NMT	CPI HP+/XD+, Graco, SB

*DropsA® is a registered trademark of DropsA USA, Inc.*

Patent Number: #7,461,670 B1 - US D570,236 S, US D591,627 & US D613,631 S

## MOUNTING BRACKETS

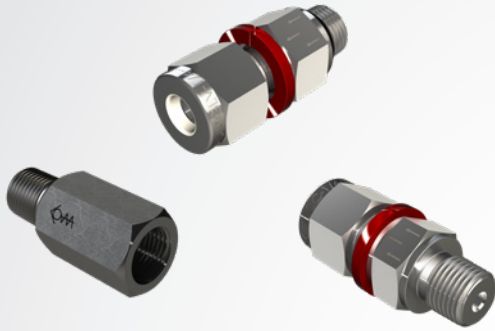
Mounting Brackets

PART NO.	DESCRIPTION
6500300000DBMBL	L Configuration
6500300000DBMBZ	Z Configuration
6500300DBMB9008	90 Degree Configuration (8")
6500300DBMB9010	90 Degree Configuration (10")
6500300DBMB9012	90 Degree Configuration (12")



## BASE PLATE CHECK VALVES

CPI's integral check valve and tube fitting featuring the CPI 1/8" ORB geometry is recommended for HP+ applications. This check valve is stainless steel, features an Viton® FKM\* poppet sealing element and is only available from CPI. Other check valves are available if the recommended check valve does not meet the customer's application.



SMX Base Plate Outlet Check Valves

PART NO.	DESCRIPTION
65002000421PROR	Tube Fitting, 1/8" ORB x 1/4" Tube, Poppet, Red Ring
6500200421PRNPT	Tube Fitting, 1/8" NPT x 1/4" Tube, Poppet, Red Ring, 8,000 psi
650020000094731	1/8" NPT Male x 1/8" NPT Female, Poppet, Steel, 7,250 psi
650020000094732	1/8" NPT Male x 1/8" NPT Female, Poppet, Stainless, 7,250 psi
650020000094735	1/8" NPT Male x 1/8" NPT Female, Ball, Steel, 5,000 psi
650020000094736	1/8" NPT Male x 1/8" NPT Female, Ball, Stainless, 5,000 psi

\*Viton® is a registered trademark of the Chemours™ Company.

## BASE PLATE FITTINGS

CPI offers other 1/8" ORB fittings to support customer's specific needs. Industry standard 1/8" NPT fittings can be used with sealant if a 1/8" ORB fitting solution is not available.

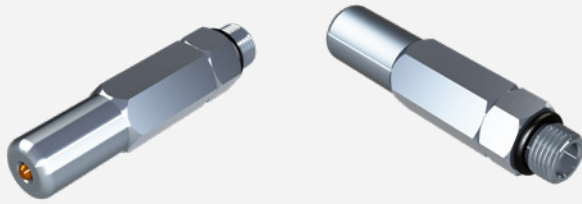


Base Plate Fittings

PART NO.	DESCRIPTION
65005000042MCOB	Inlet Tube Fitting, 1/8" ORB x 1/4" Tube, Black Ring
650050004NPT2OR	Port Adapter, 1/8" ORB x 1/4" NPT Female
65005000042TAOR	Tube Adapter Fitting, 1/8" ORB x 1/4" Tube Stub
65005000CMC44NSS	SMX Inlet Tube Fitting 1/4" NPT Male x 1/4" Tube
65005000CAM44NSS	SMX Tube Adapter Fitting, 1/4" NPT Male x 1/4" Tube Stub

## RESET PRESSURE INDICATORS

Spring loaded reset pressure indicators with memory are pressure sensing devices that enable the operator to easily locate the point of excessive pressure or lube line blockage in divider valve type lubrication systems.



<b>LENGTH</b>	2.35"
<b>HEX SIZE</b>	1/2"
<b>MATERIAL</b>	300 Stainless Steel Body & Spring
<b>SEALS</b>	Viton® O-rings
<b>PIN</b>	Aluminum, Anodized, Color Coded

\*Suitable for use with both mineral based and synthetic oils

CPI HP+ / XD+, Graco, SB, Lincoln (CPI 1/8" ORB)

PART NO.	PRESSURE RATING	COLOR
6500500TRPI1500	1,500 psi	Red
6500500TRPI2000	2,000 psi	Orange
6500500TRPI2500	2,500 psi	Purple
6500500TRPI3000	3,000 psi	Green
6500500TRPI3500	3,500 psi	Black
6500500TRPI4000	4,000 psi	Gold
6500500TRPI5000	5,000 psi	Grey

DropsA® Divider Blocks (1/8 BSPT)

PART NO.	PRESSURE RATING	COLOR
650050225601500	1,500 psi	Red
650050225602000	2,000 psi	Orange
650050225602500	2,500 psi	Purple
650050225603000	3,000 psi	Green
650050225603500	3,500 psi	Black
650050225604000	4,000 psi	Gold
650050225605000	5,000 psi	Grey

DropsA® is a registered trademark of DropsA USA, Inc.



CPI, part of the Howden group, provides industry leading lubrication system products and services, partnering with our customers to develop individual solutions to their unique lubrication needs. From individual components to complete, turnkey systems, we can provide the resources and expertise to ensure your compressor operates at peak performance and longevity.