



Beverage Systems

Technical Service Bulletin

Component Change

TSB-Y10-008

Date:

October 25, 2006

Subject:

Transition to new style regulators, pressure gauges and isolation valves.

Purpose:

To improve regulator durability and performance on beverage systems liquid CO₂ storage vessels.

Products Affected:

All Chart Beverage Systems CO₂ storage vessels.

Description:

Beginning mid November 2006, Chart is converting to the use of SMC brand piston style regulators as standard equipment on its beverage systems liquid CO₂ storage vessels. The piston style regulator will be used for all plumbing functions on standard as well as McDonald's style vessels. Additionally, it becomes the standard replacement regulator style (except for the Norgren "high flow" final line regulator) for maintenance of all plumbing circuit functions on all vessels in use.

SMC piston style regulators have a robust construction of hard aluminum that allows excellent fit with mating parts. They have minimal rubber components and few moving parts, and have excellent tolerance to the harsh conditions of CO₂ use. The regulators are color coded black for "gas supply" and gray for "pressure control" functions. They are labeled with part number and gas flow direction and have four 1/4" ports to accommodate any installation orientation as a "drop-in" replacement for Master Pneumatic and Cash Acme regulators. (A 1/8" x 1/4" adapter may be needed to attach the final line pressure gauge when changing from an "old" regulator to a piston style regulator.) A 5/32" adjustment screw on the piston style regulator is hidden by a silver cap secured by a 0.035" Allen socket set-screw (hex key wrench P/N 13440507) to inhibit unauthorized adjustment. The table on the back of this bulletin provides part number identification for regulator replacement.

Accompanying the introduction of these new regulators is the use of new, silver colored, black handled, 300 psi isolation valves that are specified for CO₂ use. New pressure gauges with stainless steel casings and color coded faces, as shown on the right, will be phased into the production of vessels near the beginning of 2007.

This component upgrade is a result of Chart's attention to continuous product improvement and has been extensively performance tested. If you have concerns or questions relative to this action, please contact your Chart Technical Service Representative at 800-253-1769 or 952-758-4400. Thank you for depending on Chart for high product quality and service.



Pressure Control



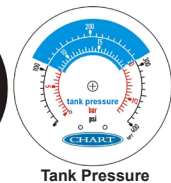
Gas Supply



SMC Piston Style Regulators shown in color coded assemblies with gauges, and CO₂ ball valves. Gauges with stainless steel casings and color coded faces will be phased into use at a later date.



Supply Pressure



Tank Pressure

CONVERSION TO SMC BRAND REGULATORS

PRESSURE CONTROL	OLD P/N(S)	NEW P/N
ECONOMIZER		
Carbo-Matic (set @ 140 psi)	1812289	13154842
Carbo-Max 600 HF (set @ 140 psi)	1812289	13154842
Carbo-Max 750 HF (set @ 140 psi)	1812289	13154842
McDonald's Carbo-400 (set @ 140 psi)	2110022	13154842
McDonald's Carbo-400 E (set @ 140 psi)	1812289	13154842
PRESSURE BUILDER		
Carbo-Mite 160 / 200 (set @ 125 psi)	2112222 or 11768373	13041151
Carbo-Mizer SF (set @ 125 psi)	2112222	13041151
Carbo-Charger 300 (set @ 125 psi)	2112222 or 11768373	13041151
Carbo-Mizer 400 / 450 (set @ 125 psi)	2110032 or 2112222 or 11768373	13041151
McDonald's 160 A / B (set @ 140 psi)	2111282	13041160
McDonald's 400 / 600 PB (set @ 140 psi)	2111282	13041160
McDonald's Mizer 450 / 750 (set @ 140 psi)	11767354	13041160
"SURE-FILL" PRESSURE RELIEF		
All Tanks With Sure-Fill (set @ 200 psi)	1812279	13154834
FINAL LINE (GAS SUPPLY)		
Carbo-Charger (set @ 90 psi)	2111682 or 11811626	13323714
Carbo-Mizer (set @ 90 psi)	2111682 or 11741859	13323714
Carbo-Mizer SF (set @ 90 psi)	2111682	13323714
McDonald's Carbo-400 E (Carbonator) (set @ 90 psi)	2111625	13323714*
McDonald's Carbo-400 E (Syrup) (set @ 65 psi)	2111615	13041186
McDonald's 400 / 600 PB (Carbonator) (set @ 90 psi)	10852311	13323714
McDonald's 400 / 600 PB (Syrup) (set @ 65 psi)	2111392	13041186
McDonald's Mizer 450 / 750 (Carbonator) (set @ 90 psi)	11811626	13323714
McDonald's Mizer 450 / 750 (Syrup) (set @ 65 psi)	2111615	13041186
SHUT-DOWN (McDONALD'S)		
160 A / B (Carbonator Circuit) (70 psi)	2111292	13154851
160 A / B (Syrup Circuit) (90 psi)	2111272	13323714
400 E (70 psi)	11663045	13154851
400 / 600 PB (70 psi)	10784048	13154851
450 / 750 (70 psi)	11767362	13154851

*A tee (P/N 1211702) and adapter (P/N 1311742) may be needed to attach the re-set button between the supply line and regulator inlet port.