



Bulk CO₂ Systems

Technical Service Bulletin

Sub-Title

TSB-BEV-1005

Date: December 18, 2015

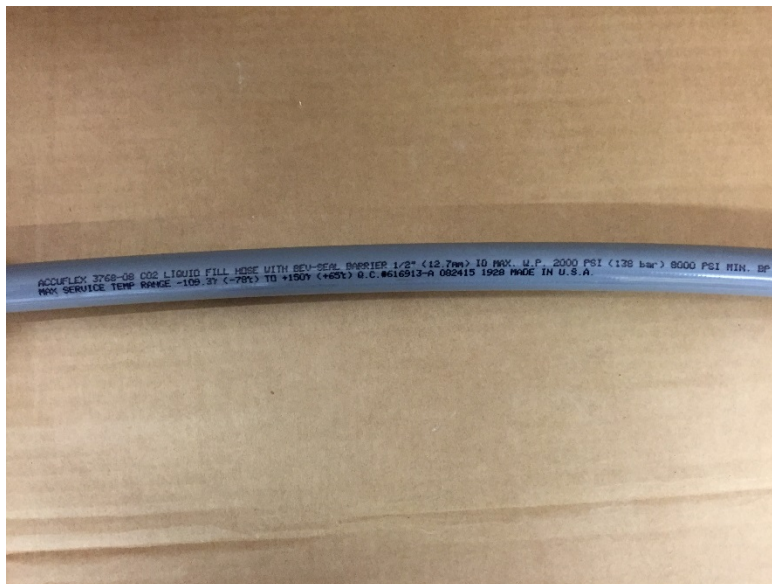
Subject: New Fill Line and Vent Line for Bulk CO₂ Beverage systems.

Products Affected: Parker 540P style fill line and series N style nylon vent line have been replaced by Accuflex 3768 series liquid CO₂ fill line and Accuflex 1416C series CO₂ vent line.

Description: The Accuflex series fill and vent lines have been selected for use in Chart Bulk CO₂ Beverage systems because they have been tested for exposure to temperatures down to -109.3°F by utilizing a flexible bend test.

3768 Fill Line –

- Comes in pre-cut lengths of 5', 10', 15', 25', 30', and 50'
- Includes factory crimped flare fittings compatible with existing fill box fill connections
- FDA/NS compliant and plasticizer free
- 2000 psi max working pressure and 8000 psi burst pressure
- Compatible with liquid CO₂
- Completed flexible bend test to -109.3°F
- See factory spec sheets for detailed specifications



3768 Accuflex Fill Line

1416C Vent Line –

- Comes in pre-cut lengths of 5', 10', 15', 25', 30', and 50'
- Must use compression style connections with nylon inserts
- 300 psi max working pressure and 1200 psi burst pressure
- Compatible with CO₂
- Completed flexible bend test to -109.3°F
- See factory spec sheets for detailed specifications



3/8" Vent Line



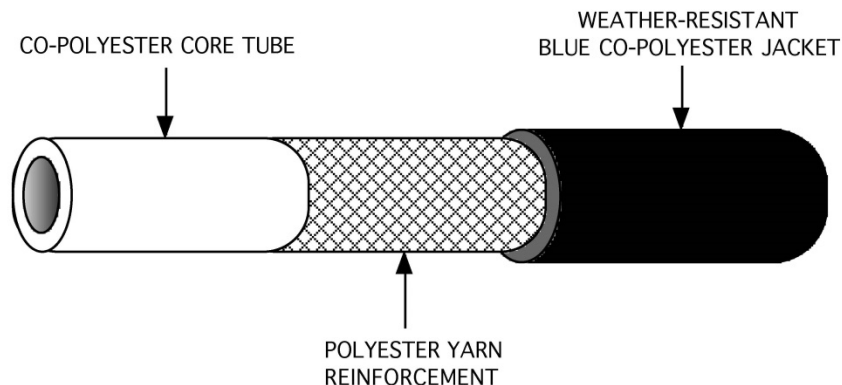
1/2" Vent Line

***NOTE* - These new vent lines must be used with compatible compression fittings, including inserts. The model 1416C vent line must not be used with barb style fittings.**

C02 VENT HOSE

1416C-08X500

"A FLEXIBLE LOW TEMPERATURE HOSE, DESIGNED FOR USE WITH COMPRESSION AND PUSH-TO-LOCK FITTINGS TO VENT EXCESS CARBON DIOXIDE GAS FROM BULK STORAGE SYSTEMS"



Dimensions: I.D. = 0.375" +/- 0.006"
O.D. = 0.500" +/- 0.005"

Pressure Capabilities: - MAX. 300 PSIG WP @ 70F
- MIN. 1200 PSIG BURST @ 70F

Packaging: 500 Foot Cardboard Spools/Boxed


Material Performance: The co-polyester material, similar to that used in DOT 106 air brake hose, offers a superior service temperature range and longer service life to that provided by traditional nylon tubing.

Service Temperature Range: -109.3°F (-78°C) to +200°F (+93°C)
This hose has been bent under laboratory conditions at -109.3°F (-78°C) without cracking

Branding: White Jet Ink Repeated Every 3 Feet:

CHART #XXXXXXXX C02 VENT HOSE 3/8" ID 300 PSI WP 1200 PSI MIN BP SERV. TEMP. -109F (-78C) TO +200F (+93C) CANADA date code

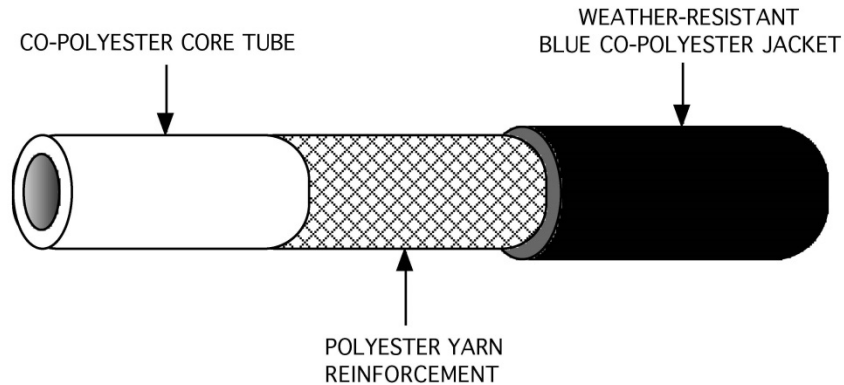
TECHNICAL SHEET

 ACCUFLEX INDUSTRIAL HOSE LTD. MANUFACTURERS OF HOSE AND TUBING	
DRAWN BY: K. DUNLOP	DRAWING SERIES: 1416C
DATE: MAR. 05, 2014	

C02 VENT HOSE

1416C-12X250

"A FLEXIBLE LOW TEMPERATURE HOSE, DESIGNED FOR USE WITH COMPRESSION AND PUSH-TO-LOCK FITTINGS TO VENT EXCESS CARBON DIOXIDE GAS FROM BULK STORAGE SYSTEMS"



Dimensions: I.D. = 0.566" +/- 0.009"
O.D. = 0.750" +/- 0.005"

Pressure Capabilities: - MAX. 300 PSIG WP @ 70F
- MIN. 1200 PSIG BURST @ 70F

Packaging: 250 Foot Cardboard Spools/Boxed


Material Performance: The co-polyester material, similar to that used in DOT 106 air brake hose, offers a superior service temperature range and longer service life to that provided by traditional nylon tubing.

Service Temperature Range: -109.3°F (-78°C) to +200°F (+93°C)
This hose has been bent under laboratory conditions at -109.3°F (-78°C) without cracking

Branding: White Jet Ink Repeated Every 3 Feet:

CHART #20701609 C02 VENT HOSE 1/2" ID 300 PSI WP 1200 PSI MIN BP SERV. TEMP. -109F (-78C) TO +200F (+93C) CANADA date code

TECHNICAL SHEET

 ACCUFLEX INDUSTRIAL HOSE LTD. MANUFACTURERS OF HOSE AND TUBING	
DRAWN BY: K. DUNLOP	DRAWING SERIES: 1416C
DATE: MAR. 05, 2014	



Accuflex Industrial Hose, Ltd.

A Kuriyama Group Company

36663 Van Born Road, Suite 300, Romulus, MI 48174

Phone: (734) 713-4100 • Fax: (734) 713-4190

Web Site: www.accuflex.com • E-Mail: sales@accuflex.com

Bev-Seal® High Pressure CO2 Barrier Protected Fill Hose



HIGH PRESSURE Bev-Seal® CO2 Barrier Protected Fill Hose is ideal for handling high pressure CO2 lines, while providing great abrasion resistance and drag ability and also provides excellent barrier protection from environmental contamination, thus assuring the quality of the CO2 gas being delivered and taste protection for the final beverage.

Construction: Bev-Seal® Core tube, natural food grade multi-layer barrier-style polyethylene core tube
2 braids of polyester yarn
Gray perforated outer jacket.
Note: All materials have been selected for their exceptional low temperature properties.

Service Temperature Range: -109F (-78C) to +140F (+60C)

Features and Benefits:

Hose is suitable for the transfer of CO2 gas at working pressures up to a maximum of 2,000 psi.
Inner contact material complies with FDA CFR 177.1520 c 3.2a and is identical to that used in selected NSF 51 listed beverage hose and tubing products and does not contain Plasticizer and neither does the jacket material.
Proprietary core tube design resists permeation of the CO2 gas, while at the same time protecting the gas from ingress of external contaminants.
Heavy walled two braid bonded construction resists crushing and kinking.
Exceptional low temperature operating properties; will bend without cracking at -109F (-78C)

Specifications:

Part Number	ID	OD	Packaging	Max W.P. @ 70F	Weight lbs/pkg	Min. Bend Radius
3768-08X600	.500"	.834"	600 foot reel	2000 psig	90.0	5.0"

Branded: **ACCUFLEX 3768-08 CO2 LIQUID FILL HOSE WITH BEV-SEAL BARRIER 1/2"**
(12.7mm) ID MAX. W.P. 2000 PSI (138 bar) 8000 PSI MIN. BP MAX SERVICE TEMP RANGE
-109°F (-78°C) TO +150°F (+65°C) Q.C.# xxxxxx-x MMDDYY hhmm MADE IN U.S.A.

Certifications: Inner contact material complies with FDA CFR 177.1520 c 3.2a

Quality Hose & Tubing Products

Contact: If you have concerns or questions relative to this action, please contact your Chart Technical Service Representative at 1-800-247-4446. Thank you for depending on Chart for high product quality and service.