



Island Knockout Separator Protects Your Vacuum System and Your Revenue

Specially Designed for
Auto Cleaning Operations



Shown with optional vacuum accessories: hoses, tools and tool hangers.



Compact Preseparator Intercepts and Collects Bulky Trash Right Beside the Vehicle

At fast-paced auto cleaning operations, hurried workers may vacuum up papers, food wrappers and liquids along with sand and other routine junk. It may be a potential setup for trouble. If the mixture clumps up in the vacuum lines, you've got to shut down the operation and snake the line. That involves costly router service charges and lost productivity.

Spencer's Island Knockout Separator (IKS) is your "advance guard" to protect the vacuum system from blockages, damage and resulting downtime. The IKS is a centrifugal preseparator equipped with two vacuum inlets and removable dirt can. It's typically installed on islands between auto cleaning lanes, connected to a vacuum tubing network and powered by a remote Spencer CarVac™ vacuum system. Two operators can work at once, using 1½" or 2" diameter hoses connected to the IKS vacuum inlets.

Features and Benefits

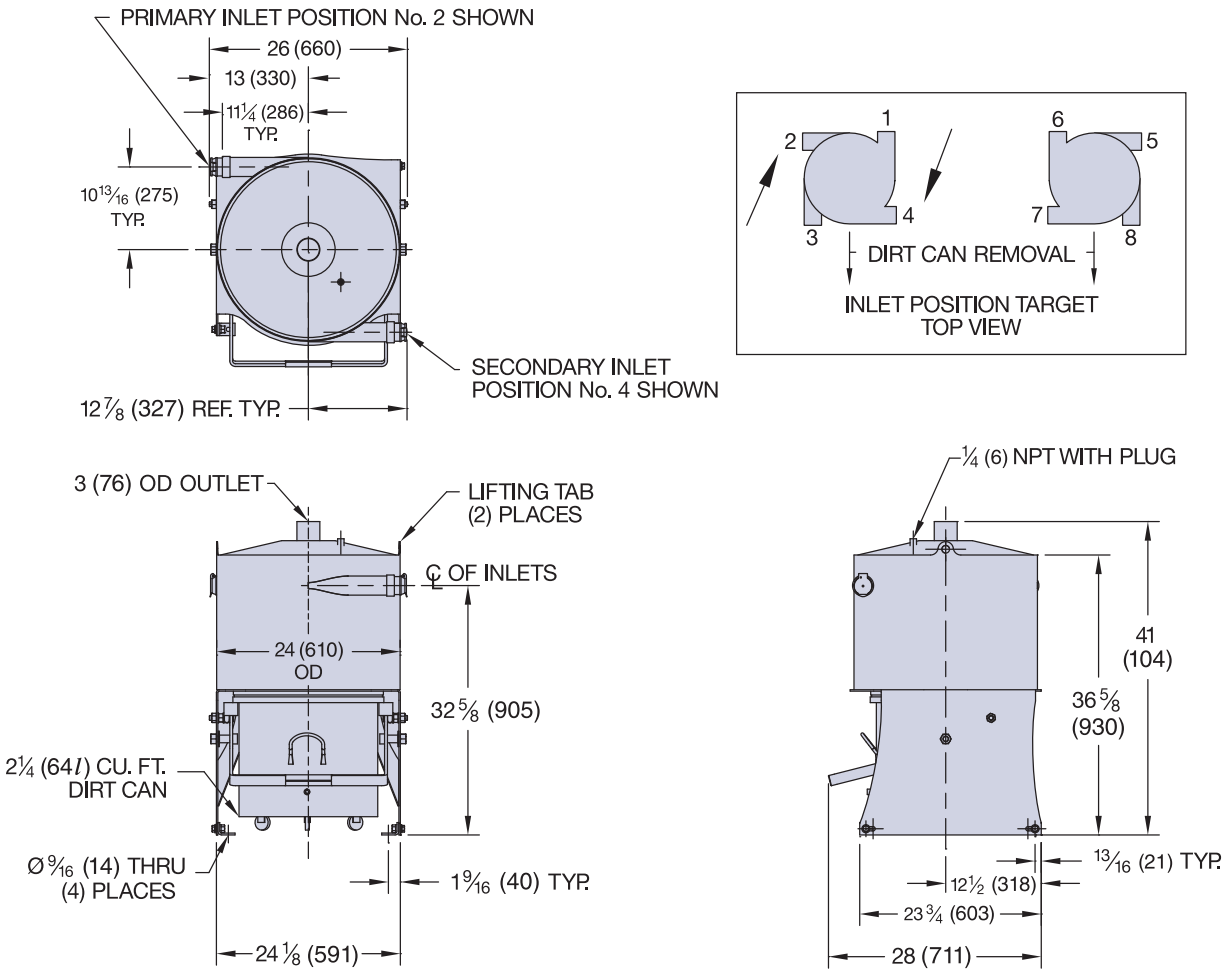
- Helps avoid system shutdowns and service calls due to plugged vacuum lines
- Reduces downtime to help keep your operation running at top efficiency
- Allows less frequent maintenance of the primary separator because heavy trash is intercepted early
- Handles incidental liquid spills such as snow melt and shampoo suds
- 2½ cu. ft. metal dirt can is easily handled and emptied
- Intercepts gravel and grit, reducing internal abrasion of the vacuum tubing
- Removes most paper and plastic wrap that could "blind" the primary separator's filter bags and reduce suction
- Promotes longer filter bag life; reduces bag damage that could allow unfiltered dirt into the vacuum producer
- Each IKS can be isolated with an air gate valve for emptying without shutting down the entire vacuum system
- Three standard models — two with inlet valves (1½" or 2"), one without
- Compact footprint allows easy fit on most islands or in tight spaces

Spencer Island Knockout Separator

Dimensions: Shown in inches / (mm)

Dimensions are approximate and intended for reference only.

Spencer reserves the right to make design improvements and/or change dimensions without notice.



Part Number	Maximum Vac. in. Hg	Hose Diameter	Primary Inlet Size	Secondary Inlet Size	Approx. Wt. lbs.
SEP90314	8	2"	2" FNPT w/ VLV90100	2" FNPT w/ VLV90100	120
SEP90313		1 ¹ / ₂ "	2" FNPT w/ VLV90083	2" FNPT w/ VLV90083	
SEP90312			2" FNPT	2" FNPT	

For additional information contact marketing@spencer-air.com or call 800-232-4321 and ask for Car Care Division Sales.



The  **Spencer** Turbine Company, 600 Day Hill Road, Windsor, CT 06095-4706

TEL 800-232-4321 ♦ 860-688-8361 ♦ FAX 860-688-0098 ♦ www.spencerturbine.com



Spencer Bag-in/Bag-out Cartridge Separator Reduces Toxic Material Exposure



Spencer's Bag-in/Bag-out (BIBO) cartridge separator is designed for the collection of toxic, carcinogenic, reactive, biological and similar hazardous materials. Supplied with filter cartridges that are inserted and removed without direct worker contact it aids compliance with OSHA regulations by minimizing personnel exposure to toxins and helps protect the environment by providing an approved technique for collecting hazardous materials.

The BIBO separator's filter changes are made through access door equipped with inner vacuum seals and protective change-out bags with integral gloves. Both clean and contaminated cartridges are handled through the change-out bags ("bag-in/bag-out"). This separator also features Spencer's Jet-Clean® cartridge cleaning, which reduces the frequency of filter replacements. The cartridges are periodically cleaned with pulses of compressed air without taking the filters off-line or interrupting the filtration. This automated, in-place cleaning reduces the filter change-out frequency.

In typical arrangements, collected materials accumulate in a material storage hopper at the bottom of the separators, emptying through a knife gate discharge valve and Hazmat drum cover into a 55-gallon drum.

Features

- Internal BIBO HEPA stacked filters for 99.97% efficiency at 0.3 microns
- PTFE membrane cartridges (60 sq. ft. per cartridge)
- Disposable glove bag and removable tray for change-out
- 18" diameter access door
- Bolt-on clean air plenum access door
- Magnehelic differential pressure gauge for primary and HEPA filters
- Hopper bottom with I-beam mounting pads
- 60° hopper and 8" flange on material discharge
- 68" clearance under discharge flange
- NEMA 4 electrical controls

Materials of Construction

- ASTM A569 hot-rolled steel
- Epoxy primer with Spencer blue urethane topcoat finish

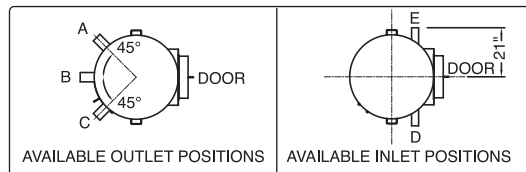
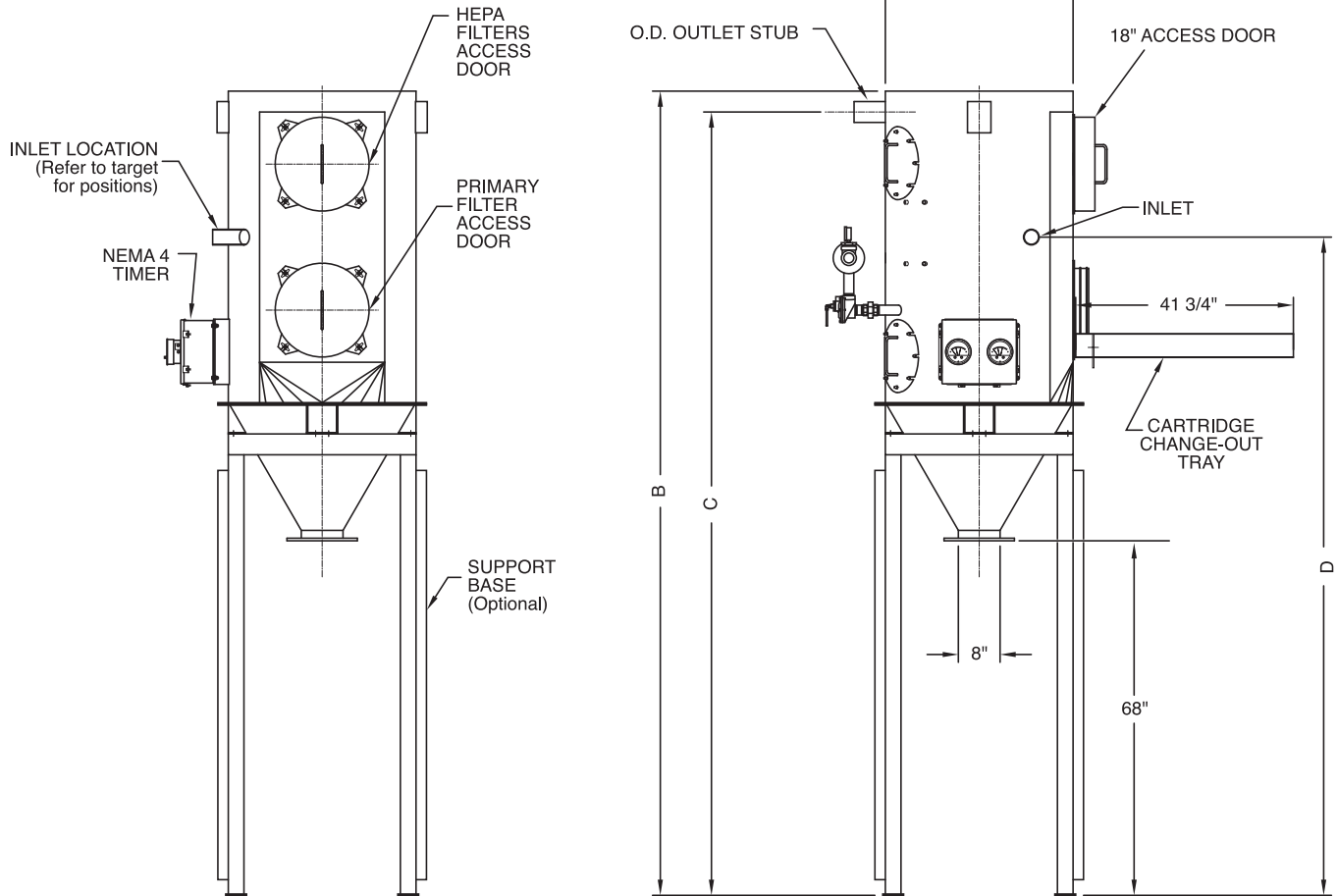
Available Options

- Option filter materials
- Grounding lug and cartridges
- Explosion relief port
- NEMA 9 electrical controls
- Support base
- BIBO discharge assembly
- Special paints, including food grade

Spencer® Bag-in/Bag-out Cartridge Separator

Dimensions

Dimensions are approximate and intended for reference only.




HOPPER BOTTOM WITH I-BEAM MOUNTING

Model No.	Dimensions (Inches)				In/Out Size	Max Vacuum ("Hg)	Filter Area (Sq. Ft)	Primary Cartridge Qty	Secondary Cartridge Qty
	A	B	C	D					
LH936XBS	36	154-1/4	150-1/4	126-1/4	3 / 4	13	60	1	2
LH942XBS	42	162-7/16	158	134-7/16	6 / 6	13	120	2	4
LH942XBX	42	204-7/16	183-7/16	155-7/16	6 / 6	13	240	4	8
LH950XBS	50	211-3/8	189-3/8	162-3/8	8 / 8	13	240	4	8

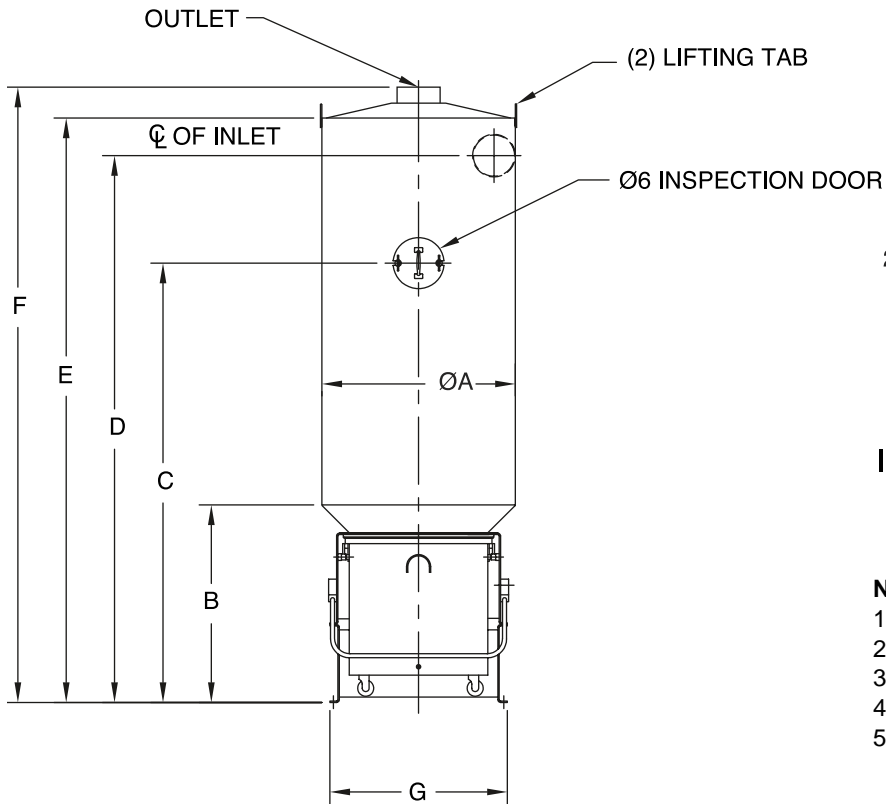
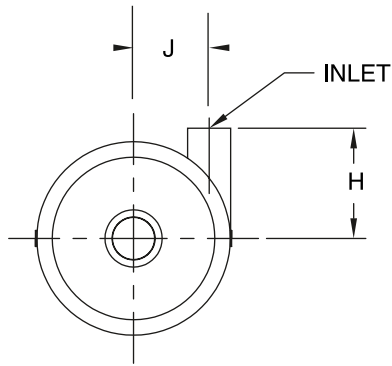
Notes: All dimensions are in inches. Multiply by 25.4 to obtain mm.

Spencer reserves the right to make design improvements and/or change dimensions without notice.

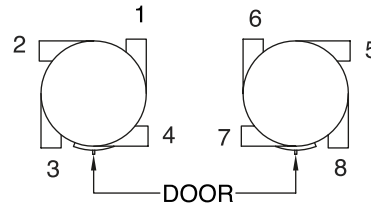
Blowers & Vacuum Systems with an Engineering Edge

The  **Spencer Turbine Company, 600 Day Hill Road, Windsor, CT 06095-4706**

TEL 800-232-4321 ♦ 860-688-8361 ♦ FAX 860-688-0098 ♦ www.spencerturbine.com



Model No.	Max Vac. "HG	Net Wt. lb	Dirt Can ft ³	Inlet Size	Outlet Size	A	B	C	D	E	F	G	H	J
CD324CA	8	240	3	4	4	24	25 1/2	76 1/2	86 1/2	91 1/2	96 3/8	26 11/16	14	10 1/16
CD324CB	13	330												
CD730CA	8	330	7 1/2	6	6	30	31 1/2	77 1/2	91 1/2	97 1/2	103 1/8	33 1/4	18	12 1/16
CD730CB	13	480												
CD736CA	8	600	7 1/2	8	8	36	36 3/4	81 3/4	101 3/4	108 3/4	114 1/2	33 1/4	20 1/2	14 1/16
CD736CB	13	980												
CD742CA	8	730	7 1/2	10	10	42	40	79	104	112	118 5/8	45	23 1/2	16 1/16
CD742CB	13	1100												
CD750CA	8	1225	7 1/2	12	12	50	44 1/2	89 1/2	119 1/2	128 1/2	137 5/8	54	25 1/2	19 1/16
CD750CB	13	1610												
CD760CA	8	1650	7 1/2	14	14	60	49	88	123	133	142 1/2	64	33	23 1/16
CD760CB	13	2200												



INLET POSITION TARGET
TOP VIEW

Notes:

1. All dimensions are in inches. Multiply by 25.4 to obtain mm.
2. Inlet and outlet connection sizes are tubing O.D.
3. Inlet position No. 1 shown. See target for proper location.
4. For larger separator diameters contact factory.
5. Spencer reserves the right to make design improvements and/or change dimensions without notice.

MODEL NUMBER _____

INLET POSITION _____

THIS DOCUMENT AND INFORMATION CONTAINED HEREIN IS PROPRIETARY TO THE SPENCER TURBINE COMPANY AND SHOULD NOT BE USED, COPIED OR DISCLOSED TO OTHERS, EXCEPT AS SPECIFICALLY AUTHORIZED IN WRITING BY THE SPENCER TURBINE COMPANY.

DIMENSIONS CENTRIFUGAL SEPARATOR (Removable Dirt Can)



CUSTOMER _____
 CUSTOMER P.O. _____
 INSTALLATION _____

600 Day Hill Road
 Windsor, CT 06095-4706 USA
 TEL 860-688-8361 ♦ FAX 860-688-0098
 www.spencerturbine.com

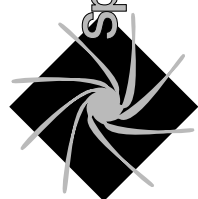
PRELIMINARY CERTIFIED BY _____ DATE _____
 SALES ORDER NO. _____
 SERIAL NO. _____ **Bulletin No. 269**

Typical Specifications for Centrifugal Separators with Removable Dirt Can

The system shall be furnished with a _____inch diameter Centrifugal Separator as manufactured by The Spencer Turbine Company of Windsor, Connecticut, complete with a _____ cubic foot Removable Dirt Can. Separator shall not exceed _____ inches in height and shall be made from fabricated steel of sufficient gage to withstand the required vacuum. Separator shall be capable of separating at least 95% of the dust.

The Separator intake shall be of the tangential type and shall be suitable for connection to a _____inch diameter tubing by means of a slip coupling. The Separator outlet shall be in the center of the top of the Separator and shall be suitable for connection to a _____inch diameter tubing by means of a slip coupling.

The Removable Dirt Can shall be provided with three ball bearing casters and two handles. The dirt can shall be held in place by a cam arrangement so that it may be removed for emptying by raising a bail or handle, and can be locked into position by lowering this bail.

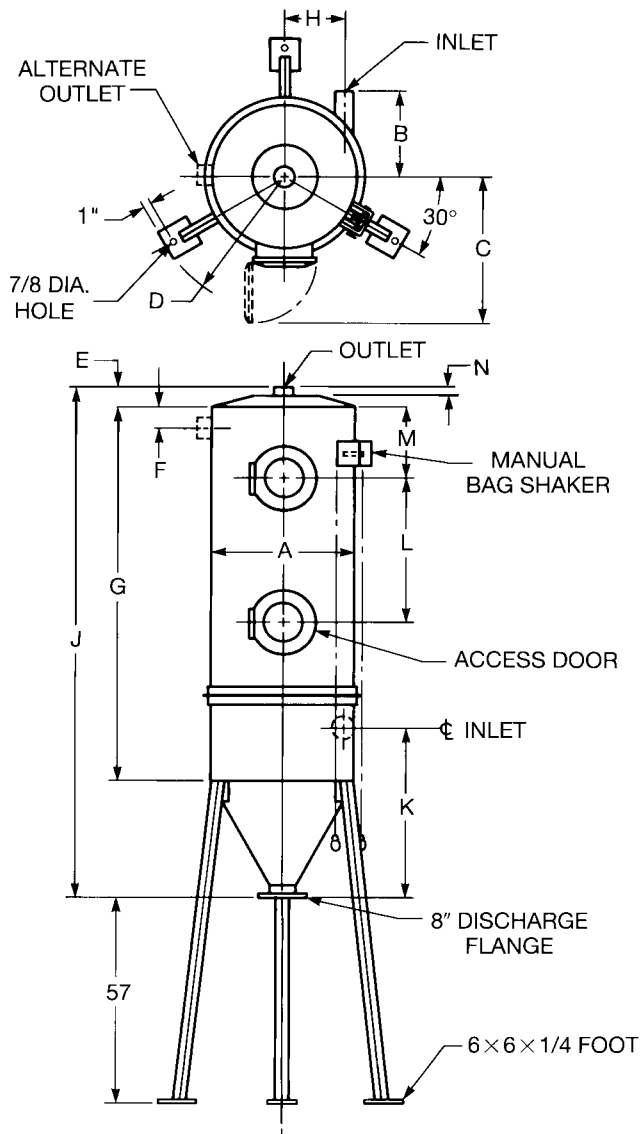


The

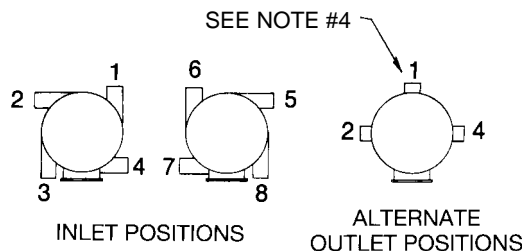
Spencer Turbine Company, 600 Day Hill Road, Windsor, CT 06095-4706

TEL 800-232-4321 ♦ 860-688-8361 ♦ FAX 860-688-0098 ♦ www.spencerturbine.com

Since 1892 moving air and gas for a cleaner environment



Model No.	Max Vac. "HG	Net Wt. lb	Stor. Cap. ft ³	Filter Area ft ²	In/Out Size	Bag		A	B	C	D	E	F	G	H	J	K	L	M	N	Access Door	
						No.	Cat.#														No.	Dia
TH820AA	8	190	2	31	3	12	4380-N	20	10 1/2	27	24 7/16	4	3 1/2	60 1/4	8 9/16	77 5/8	27 7/8	—	19 1/2	2 5/8	1	16
TH820AB	13	215																				
TH824AA	8	250	4	53	4	10	5575-N	24	14	31	26 19/16	4 7/8	4	77 3/4	10 1/16	99 7/16	28 13/16	36	12	3	2	16
TH824AB	13	350																				
TH830AA	8	360	7 1/2	102	6	19	5575-N	30	18	34	30 7/16	5 5/8	6	82	12 1/16	109 9/8	36 1/4	36	12	3	2	16
TH830AB	13	540																				
TH836AA	8	690	12	179	8	22	6705-N	36	20 1/2	37	34	5 3/4	6	94	14 1/16	127	40	48	12	2 13/16	2	16
TH836AB	13	875																				
TH842AA	8	850	16	252	8	31	6705-N	42	20	48	37 5/8	6 5/8	7	94	17 1/16	133	44 5/8	40	16	3 3/16	2	24
TH842AB	13	1300																				
TH850AA	8	1225	22 1/2	341	10	42	6705-N	50	23	52	42 3/8	9 7/8	7	94	20 1/16	142 1/2	51 1/8	40	16	4	2	24
TH850AB	13	1770																				
TH860AA	8	1825	35	495	12	61	6705-N	60	31 1/2	57	48 3/8	9 1/2	11 1/2	94	24 1/16	151 1/2	58 1/4	40	16	4	4	24
TH860AB	13	2200																				
TH872AA	8	2415	64	682	14	84	6705-N	72	35	63	55 9/16	10	12	105	29 1/16	173 1/2	72	43 3/4	16	4	4	24
TH872AB	13	2925																				



Notes:

1. All dimensions are in inches. Multiply by 25.4 to obtain mm.
2. Inlet and outlet connection sizes are tubing O.D.
3. Discharge flange is 8" 125# drilling ANSI with 8" I.D. x 13 1/2" O.D., (8) 7/8" holes on an 11 3/4" B.C. (holes straddle center lines)
4. Outlet position No. 1 not available on separators with (4) access doors.
5. Separators with (4) access doors have (2) doors on either side.
6. Inlet position No. 1 shown. See target for proper location.

MODEL NUMBER _____

INLET POSITION _____

OUTLET POSITION _____

FILTER BAG MATERIAL _____

FILTER BAG PART NO. _____

THIS DOCUMENT AND INFORMATION CONTAINED HEREIN IS PROPRIETARY TO THE SPENCER TURBINE COMPANY AND SHOULD NOT BE USED, COPIED OR DISCLOSED TO OTHERS, EXCEPT AS SPECIFICALLY AUTHORIZED IN WRITING BY THE SPENCER TURBINE COMPANY.

DIMENSIONS TUBULAR BAG SEPARATOR (Hopper Bottom with Legs)

CUSTOMER _____

CUSTOMER P.O. _____

INSTALLATION _____

The  Spencer Turbine Company

600 Day Hill Road
Windsor, CT 06095-4706 USA
TEL 860-688-8361 ♦ FAX 860-688-0098
www.spencerturbine.com

PRELIMINARY CERTIFIED BY _____ DATE _____

SALES ORDER NO. _____

SERIAL NO. _____ **Bulletin No. 273C**

Typical Specifications Tubular Bag Separator (Hopper Bottom, with Legs)

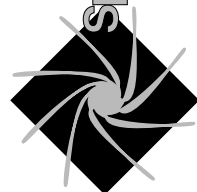
The system shall be furnished with a tubular bag, hopper bottom separator with legs. The separator shall be a model no. _____ as manufactured by The Spencer Turbine Company of Windsor, Connecticut.

The separator shall be a two stage filtration system for maximum efficiency. The first stage shall consist of a centrifugal separation chamber whereby dust laden air enters the separator tangentially and is acted upon by a centrifugal force. The first stage shall act to remove the majority of particles allowing only finer particles to enter the second stage or bag chamber of the separator.

The second stage of the filtration system shall consist of a series of filter bags having a total filter area of _____ sq. ft. The filter bags shall be open at the bottom and attached to a mounting plate by a spring steel ring. They shall be closed at the top and supported by the shaker plate. Proper bag tension shall be maintained by a single-action adjustable clamp which attaches the closed end of the bag to the shaker plate. Access doors of suitable size shall be provided for filter bag maintenance. Cleaning of the filter bags shall be by means of an external mechanical shaker. The second stage shall filter out practically all of the remaining dust from the airstream.

The separator shall be constructed with a conical hopper bottom, with side angles of 60 degrees for a total storage capacity of not less than _____ cu. ft. The hopper shall terminate in an (8) inch flange for connection to a suitable discharge valve for emptying.

The separator shall be supported by three structural steel legs making an angle of (7) degrees from the vertical for increased stability. The legs shall be of sufficient length to provide for a minimum of 57 inch clearance between the discharge flange and the floor.

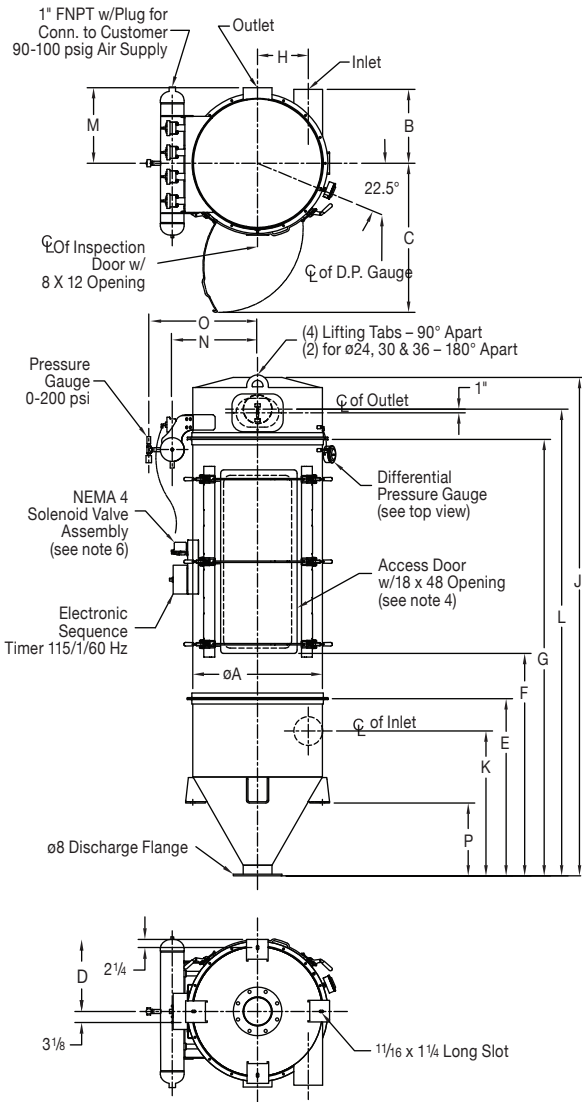


The

Since 1892 moving air and gas for a cleaner environment
Spencer Turbine Company, 600 Day Hill Road, Windsor, CT 06095-4706

TEL 800-232-4321 ♦ 860-688-8361 ♦ FAX 860-688-0098 ♦ www.spencerturbine.com

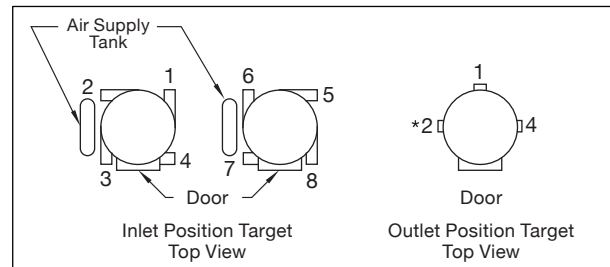
DIMENSIONS JET-CLEAN® BAG SEPARATOR (Hopper Bottom with I-Beam Mounting Pads)



Model No.	Max. Vac. "Hg	Net Wt. lbs.	Filter Bag			Stor. Cap ft ³	ØSize		øA	B	C	D	E	F	G	H	J	K	L	M	N	O	P	Solenoid Valve Qty.	Access Door Qty.
			Cat. #	Area ft ²	Qty.		Inlet	Outlet																	
JH924NB6	13	855	672	66	07	4	4	5	24	14	35 1/2	12	34 5/16	46 13/16	106 5/16	10 1/16	124 3/16	28 13/16	114 11/16	15	17 11/16	25	9 13/16	3	1
JH924NB8	13	1165	696	88										70 13/16	130 5/16		148 3/16		138 11/16						
JH930NB6	13	1370	672	94	10	7 1/2	6	6	30	18	38 1/2	15	43 3/4	56 1/4	115 3/4	12 1/16	133 5/8	36 1/4	124 1/8	18	20 7/8	28 1/8	15	4	1
JH930NB8	13	1460	696	126										80 1/4	139 3/4		157 5/8		148 1/8						
JH936NB6	13	1640	672	132	14	12	8	8	36	20 1/2	41 1/2	18	49	61 1/2	121	14 1/16	138 7/8	40	129 3/8	21	23 11/16	31	20 1/4	4	1
JH936NB8	13	2280	696	176										85 1/2	145		162 7/8		153 3/8						
JH942NB6	13	2535	672	179	19	16	8	10	42	20	44 1/2	21	54 1/8	71 5/8	126 1/8	17 1/16	144 1/16	44 5/8	134 1/2	25	26 7/8	34 1/4	25 3/8	5	1
JH942NB8	13	2700	696	238										95 5/8	150 1/8		168 1/16		158 1/2						
JH950NB6	13	2984	672	264	28	22 1/2	10	10	50	23	48 1/2	25	61 1/8	78 5/8	133 1/8	20 1/16	153 3/8	51 1/8	142	29	31 3/4	39	32 3/8	6	2
JH950NB8	13	3180	696	352										102 5/8	157 1/8		177 3/8		166						
JH960NB6	13	3600	672	414	44	35	12	12	60	31 1/2	53 1/2	30	69 3/4	87 1/4	141 3/4	24 1/16	162 7/8	58 1/4	150 5/8	34	36 11/16	44	41	8	1
JH960NB8	13	3800	696	553										111 1/4	165 3/4		186 7/8		174 5/8						
JH972NB6	13	4250	672	575	61	64	14	14	72	35	59 5/8	36 1/8	87 3/8	104 7/8	159 3/8	29 1/16	184 9/16	71 7/8	169 3/4	41	42 7/8	50 1/8	51 3/8	9	1
JH972NB8	13	4500	696	766										128 7/8	183 3/8		208 9/16		193 3/4						

Notes:

- All dimensions shown in inches. Multiply by 25.4 to obtain mm.
- Inlet and outlet connection sizes are tubing O.D.
- Rotate air supply tank 180° if outlet position No. 2 is used.
- Separator with (2) access doors are 180° apart.
- Discharge flange is 8" 125 lb. drilling ANSI with 8 I.D. x 13 1/2 O.D. x 1/2 thick, (8) Ø7/8 on Ø11 3/4 B.C. (holes straddle centerlines).
- Separator with (4) solenoid assembly shown (for actual quantity see table above).
- Inlet and Outlet position No. 1 shown (see targets below for proper location).
- Bags and bag frames shipped loose - requires field assembly.



MODEL NUMBER _____

INLET POSITION _____

OUTLET POSITION _____

FILTER BAG MATERIAL _____

FILTER BAG NO. _____

PRELIMINARY CERTIFIED BY _____

SALES ORDER NO. _____

SERIAL NO _____ DATE _____

CUSTOMER _____

CUSTOMER P.O. _____

INSTALLATION _____

THIS DOCUMENT AND INFORMATION CONTAINED HEREIN IS PROPRIETARY TO THE SPENCER TURBINE COMPANY AND SHOULD NOT BE USED, COPIED OR DISCLOSED TO OTHERS, EXCEPT AS SPECIFICALLY AUTHORIZED IN WRITING BY THE SPENCER TURBINE COMPANY.

The Spencer Turbine Company, 600 Day Hill Road, Windsor, CT 06095 USA

TEL 800-232-4321 ♦ 860-688-8361 ♦ FAX 860-688-0098 ♦ www.spencerturbine.com