



# Industravac<sup>®</sup> Vacuum Units

**Spencer<sup>®</sup>**

These high-efficiency vacuums are powerful, yet quiet and maintain a clean operational environment for all employees and visitors.

**Each stationary or mobile vacuum is fitted with efficient filter bags or filter cartridge separators to capture even the finest levels of dust and air/water/chemical particles.**

Industravac units feature pre-engineered, highly integrated designs with correctly sized, compatible, and proven components – which can also be custom-engineered to meet a facility's exact requirements. Stationary self-contained vacuums can be dedicated to a single function such as dust or chip collection or connected to tubing lines in a central vacuum cleaning system. Mobile units can be moved around a facility as needed for on-location vacuum cleaning and spill removal.

Industravac systems can be customized to meet the specific needs of manufacturers, chemical producers, welders, hospitality and restaurant businesses, health and wellness practices, grocery and retailers, car detailers, personal service providers, office buildings, educational and municipal facilities ... and any other industry.

**For in-depth technical support for Industravac and any customization needs**

**Web:** [spencerturbine.com](http://spencerturbine.com)

**Telephone:** 860.688.8361

**Toll Free:** 800.232.4321

**Customization can include:**

- HEPA filters
- custom dirt cans
- silencers
- blast gates and air bleed systems
- special sizing to fit through doors
- grounded, anti-spark filter bags
- explosion-proof or TEFC motors
- special motor voltages
- more inlet valves to handle additional operators
- mounted and prewired electrical controls
- explosion vents to meet NFPA and
- OSHA requirements

Industravac<sup>®</sup> V models are for one or two users and Industravac A, B, C and D series can accommodate up to 16 simultaneous operators.

Industravac models also follow NFPA guidelines for explosion protection and help address many OSHA workplace requirements.

For in-depth technical support for Industravac and any customization needs, please contact us for assistance. Remember that each of our Spencer representatives is trained to listen to your needs and will only make recommendations in your best interest.



Spencer Industravac Series A stationary model shown. Mobile models also available.

## Performance Data

| Volume (SCFM) | Vacuum (In. Hg) | Motor HP | Catalog Number |        | Shipping Weight (lb.) |
|---------------|-----------------|----------|----------------|--------|-----------------------|
|               |                 |          | Stationary     | Mobile |                       |
| 110           | 6.0             | 5        | SA505A         | PA505A | 865                   |
| 120           | 7.9             | 7½       | SA707A         | PA707A | 950                   |
| 175           | 6.9             | 7½       | SA607A         | PA607A | 940                   |
| 155           | 4.6             | 5        | SA405A         | PA405A | 855                   |
| 220           | 7.8             | 10       | SA710A         | PA710A | 950                   |
| 250           | 5.6             | 7½       | SA507A         | PA507A | 930                   |
| 290           | 6.5             | 10       | SA610A         | PA610A | 940                   |
| 340           | 4.0             | 7½       | SA407A         | PA407A | 920                   |

Performance based on 70 °F inlet temperature at sea level.

## Materials of Construction

- Casing, separator, base, dirt can: ASTM A1011 hot-rolled steel
- Impellers: 5052-H34 aluminum
- Shaft: AISI-1045 hot-rolled bar steel
- Finish: epoxy primer with Spencer blue urethane topcoat

## Product Features

### Vacuum Producer

Multistage centrifugal  
Standard overhung direct drive  
6" tubing upblast exhaust (diffuser on mobile)  
Average sound pressure level: 79 dBA at 3 ft.  
Factory performance tested

### Motor

5, 7½ or 10 HP, 3500 rpm  
208-230/460 volt, 3 phase, 60 Hz  
Open drip-proof  
Bearing life: 100,000 hours (L-10)

### Separator

Tubular bag separator, shaker type: 24" diameter  
Multiple inverted filter bags: Quantity 10  
Filter bag area: 39 sq. ft.  
Filter bag material: cotton sateen (Part No. BVA90061)  
Filter bag diameter: 5" (Cat. No. 5445-N)  
External manual bag shaker  
Large, hinged inspection door  
Removable dirt can, cam actuated, capacity: 2¼ cu. ft.  
Average filtration efficiency: 99.9% at 3 microns  
Dual axial inlets with target plate:  
Stationary: primary inlet – 4" tubing with sleeve  
secondary inlet – inlet valve  
(Part No. VLV90083) for  
1½" diameter hose  
Mobile: two inlet valves (Part No. VLV90083)  
for 1½" diameter hose

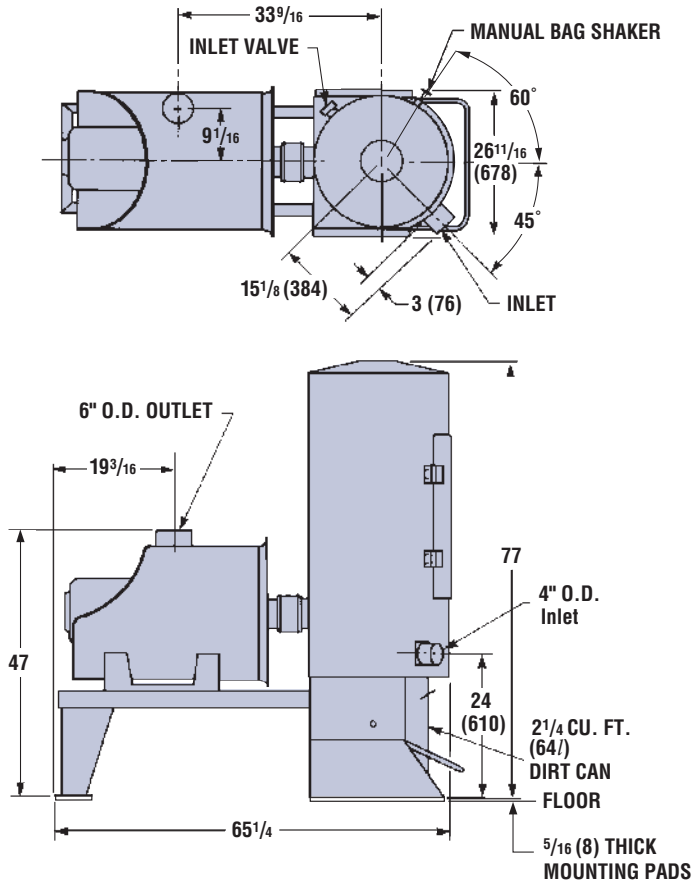
### Base

Stationary: common frame with mounting pads  
Mobile: large molded rubber tires  
NEMA 1 across-the-line starter  
50 ft. electrical cable

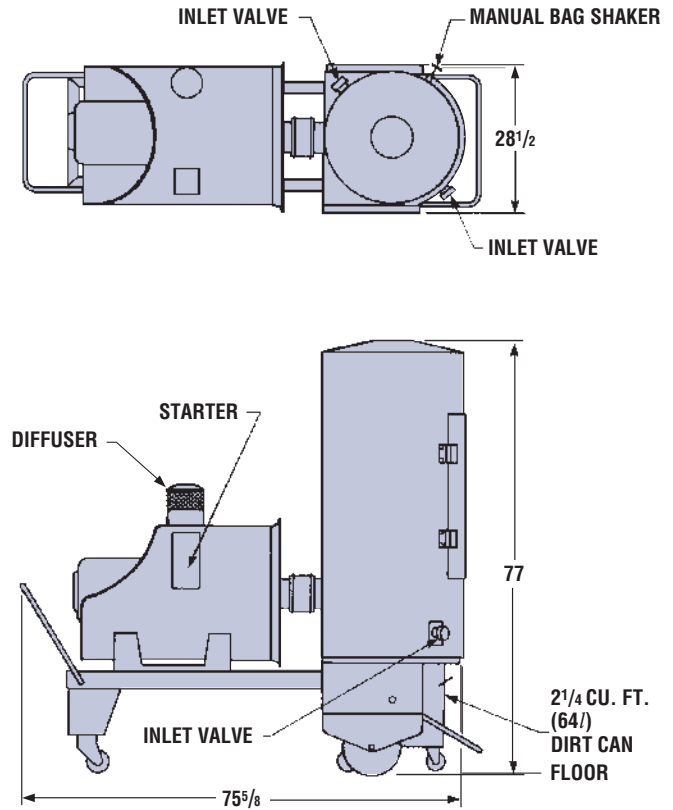
### Available Options

TEFC and explosion-proof motors  
Special motor voltages  
NEMA 4, 7 and 9 starter enclosures  
Grounded filter bags  
Other filter bag materials  
Dirt can liners (with equalizing line)  
Discharge silencer  
Discharge throttling valve  
Inlet valve (Part No. VLV90100) for 2" diameter hose  
4" threaded inlet to accommodate larger than 2" valve  
Motorized bag shaker  
Explosion relief vent  
Rear primary inlet position

**Stationary Model**



**Mobile Model**




| Performance Data                | Motor Data           | Separator Filter Data         |
|---------------------------------|----------------------|-------------------------------|
| Volume (SCFM) _____             | HP _____ RPM _____   | Area: 39 sq. ft. _____        |
| Vacuum (In. Hg) _____           | Voltage _____        | Bag Quantity: 10 _____        |
| Discharge Pressure (PSIA) _____ | Phase _____ Hz _____ | Bag Catalog No.: 5445-N _____ |
| Inlet Temperature (°F) _____    | Enclosure _____      | Bag Material: _____           |

► Spencer may make improvements and dimensional changes to equipment designs based on market trends and requirements.

**For product selection assistance, please email [marketing@spencer-air.com](mailto:marketing@spencer-air.com) or visit our website at [www.spencerturbine.com](http://www.spencerturbine.com) to locate the Spencer representative in your area.**

Industravac® is a registered trademark of The Spencer Turbine Company.



The  **Spencer Turbine Company, 600 Day Hill Road, Windsor, CT 06095 USA**

*Blowers & Vacuum Systems with an Engineering Edge*

TEL 800.232.4321 ♦ 860.688.8361 ♦ FAX 860.688.0098 ♦ [www.spencerturbine.com](http://www.spencerturbine.com)





Spencer Industravac Series B stationary model shown. Mobile models also available.

### Performance Data

| Volume (SCFM) | Vacuum (In. Hg) | Motor HP | Catalog Number |         | Shipping Weight (lb.) |
|---------------|-----------------|----------|----------------|---------|-----------------------|
|               |                 |          | Stationary     | Mobile  |                       |
| 300           | 8.0             | 15       | SB-715B        | PB-715B | 1135                  |
| 400           | 6.9             | 15       | SB-615B        | PB-615B | 1125                  |
| 420           | 4.9             | 10       | SB-410B        | PB-410B | 1050                  |
| 430           | 8.4             | 20       | SB-720B        | PB-720B | 1160                  |
| 520           | 5.7             | 15       | SB-515B        | PB-515B | 1115                  |
| 600           | 4.4             | 15       | SB-415B        | PB-415B | 1105                  |
| 610           | 6.1             | 20       | SB-620B        | PB-620B | 1150                  |

Performance based on 70 °F inlet temperature at sea level.

### Materials of Construction

- Casing, separator, base, dirt can: ASTM A1011 hot-rolled steel
- Impellers: 5052-H34 aluminum
- Shaft: AISI-1045 hot-rolled bar steel
- Finish: epoxy primer with Spencer blue urethane topcoat

### Product Features

#### Vacuum Producer

Multistage centrifugal  
Standard overhung direct drive  
6" tubing upblast exhaust (diffuser on mobile)  
Average sound pressure level: 83 dBA at 3 ft.  
Factory performance tested

#### Motor

10, 15 or 20 HP, 3500 rpm  
208-230/460 or 575 volt, 3 phase, 60 Hz  
Open drip-proof  
Bearing life: 100,000 hours (L-10)

#### Separator

Tubular bag separator, shaker type: 30" diameter  
Multiple inverted filter bags: Quantity 19  
Filter bag area: 75 sq. ft.  
Filter bag material: Cotton sateen (Part No. BVA90061)  
Filter bag diameter: 5" (Cat. No. 5445-N)  
External manual bag shaker  
Large, hinged inspection door  
Removable dirt can, cam actuated, capacity: 4½ cu. ft.  
Average filtration efficiency: 99.9% at 3 microns  
Axial inlets with target plate:  
Stationary: primary inlet – 5" tubing with sleeve  
secondary inlet – inlet valve (Part No. VLV90083) for 1½" diameter hose  
Mobile: two inlet valves (Part No. VLV90083) for 1½" diameter hose

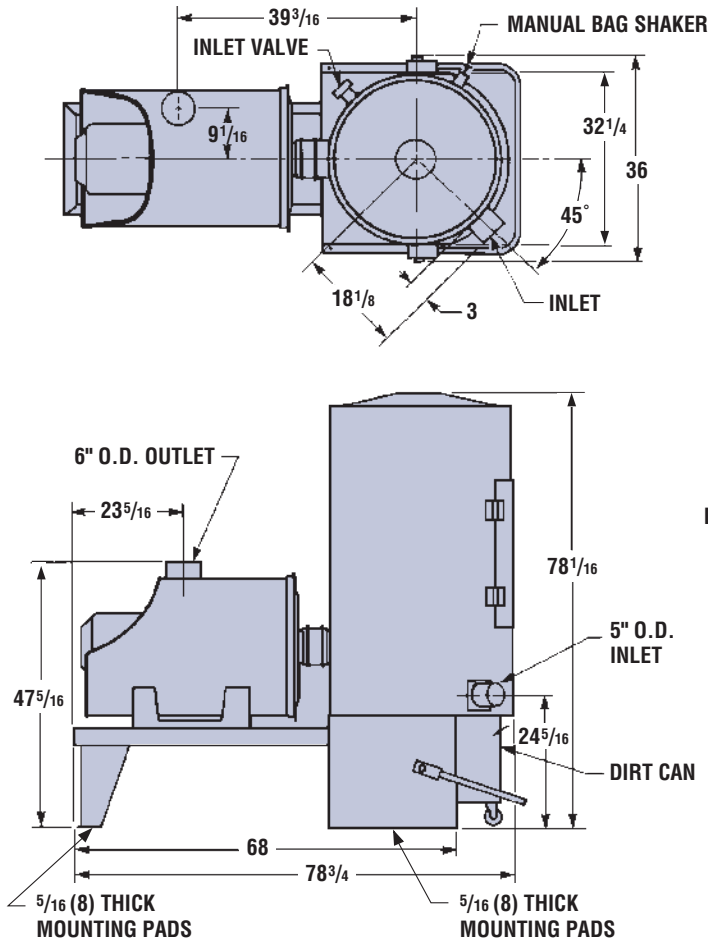
#### Base

Stationary: common frame with mounting pads  
Mobile: large molded rubber tires  
NEMA 1 across-the-line starter  
50 ft. electrical cable

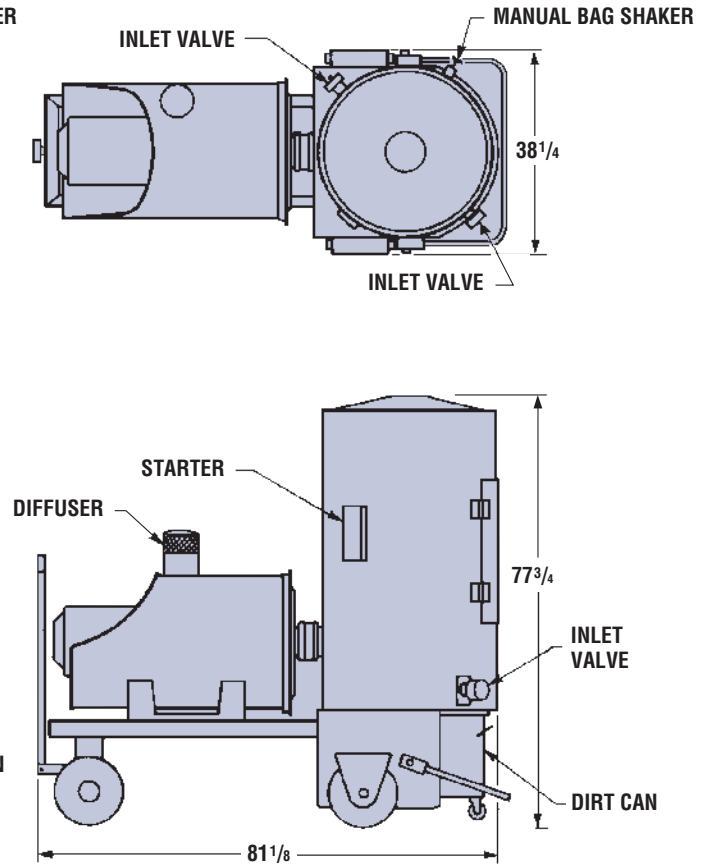
#### Available Options

TEFC and explosion-proof motors  
Special motor voltages  
NEMA 4, 7 and 9 starter enclosures  
Grounded filter bags  
Other filter bag materials  
Dirt can liners (with equalizing line)  
Discharge silencer  
Discharge throttling valve  
Inlet valve (Part No. VLV90100) for 2" diameter hose  
4" threaded inlet to accommodate larger than 2" valve  
Motorized bag shaker  
Explosion relief vent  
Rear primary inlet position

**Stationary Model**



**Mobile Model**



| Performance Data                | Motor Data           | Separator Filter Data         |
|---------------------------------|----------------------|-------------------------------|
| Volume (SCFM) _____             | HP _____ RPM _____   | Area: 75 sq. ft. _____        |
| Vacuum (In. Hg) _____           | Voltage _____        | Bag Quantity: 19 _____        |
| Discharge Pressure (PSIA) _____ | Phase _____ Hz _____ | Bag Catalog No.: 5445-N _____ |
| Inlet Temperature (°F) _____    | Enclosure _____      | Bag Material: _____           |

► Spencer may make improvements and dimensional changes to equipment designs based on market trends and requirements.

**For product selection assistance, please email [marketing@spencer-air.com](mailto:marketing@spencer-air.com) or visit our website at [www.spencerturbine.com](http://www.spencerturbine.com) to locate the Spencer representative in your area.**

Industravac® is a registered trademark of The Spencer Turbine Company.



The  **Spencer Turbine Company, 600 Day Hill Road, Windsor, CT 06095 USA**

*Blowers & Vacuum Systems with an Engineering Edge*

TEL 800.232.4321 ♦ 860.688.8361 ♦ FAX 860.688.0098 ♦ [www.spencerturbine.com](http://www.spencerturbine.com)





### Number of Operators

| Catalog Number | Number of Operators* | Motor Hp | Shipping Weight (lb.) |
|----------------|----------------------|----------|-----------------------|
| SC410          | 4                    | 10       | 1100                  |
| SC415          | 6                    | 15       | 1100                  |
| SC420          | 8                    | 20       | 1100                  |
| SC510          | 3                    | 10       | 1215                  |
| SC515          | 5                    | 15       | 1215                  |
| SC520          | 7                    | 20       | 1215                  |
| SC525          | 8                    | 25       | 1215                  |
| SC615          | 4                    | 15       | 1350                  |
| SC620          | 5                    | 20       | 1350                  |
| SC625          | 7                    | 25       | 1350                  |

Performance based on 70 °F inlet temperature at sea level.

\*Based on 100 SCFM/Operator with 1½" diameter x 15 feet hose.

### Materials of Construction

- Casing, separator, base, dirt can: ASTM A1011 hot-rolled steel
- Impellers: 5052-H34 aluminum
- Shaft: AISI-1045 hot-rolled bar steel
- Finish: epoxy primer with Spencer blue urethane topcoat

### Product Features

#### Vacuum Producer

Multistage centrifugal  
Standard overhung direct drive  
Bottom exhaust with silencer (Patent No. 4,874,410)  
Average sound level from 84 dBA at 3 feet  
Factory performance tested

#### Motor

10, 15, 20 or 25 HP, 3500 rpm  
200-230/460 or 575 volt, three phase, 60 Hz  
TEFC  
Bearing life: 100,000 hours (L-10)

#### Separator

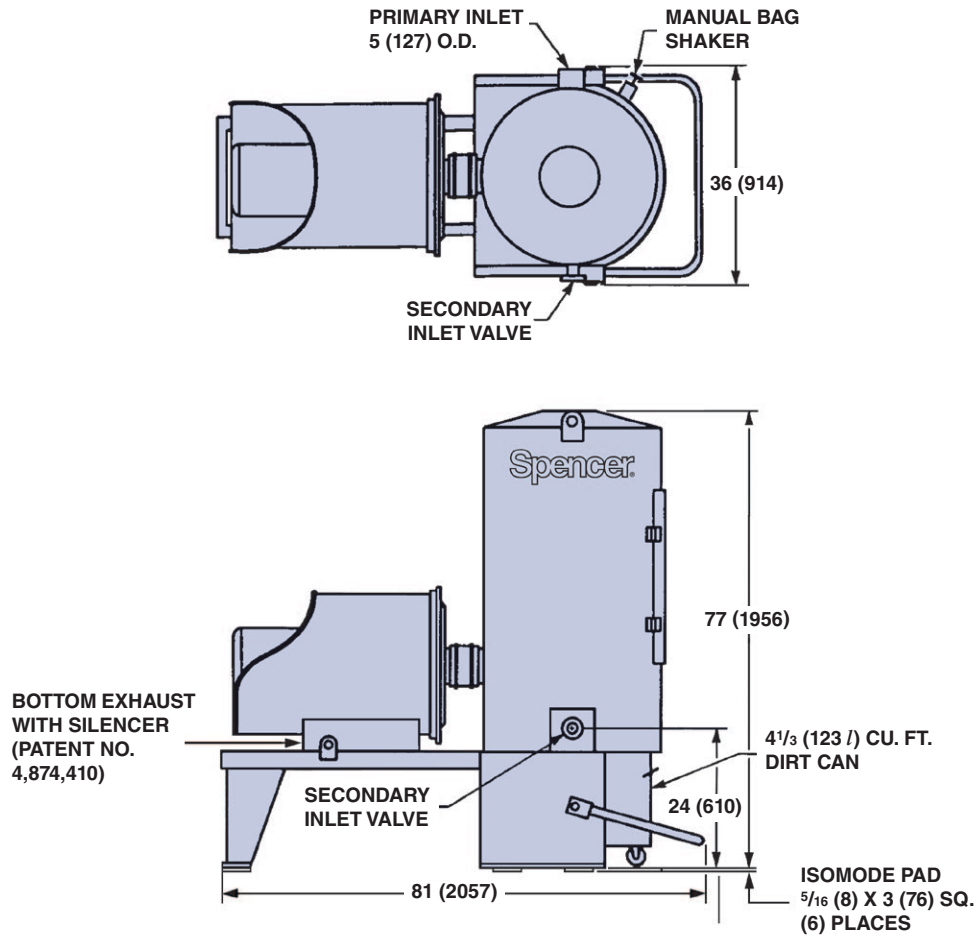
Tubular bag separator, shaker type: 30" diameter  
Multiple-inverted filter bags: Quantity 12  
Filter bag area: 56.5 sq. ft  
Filter bag material: cotton sateen (Part No. BVA90051)  
Filter bag diameter: 6" (Cat. No. 6445-N)  
External manual bag shaker  
Large, hinged inspection door (accepts padlock)  
Removable dirt can, cam actuated, capacity: 4⅓ cu. ft. (accepts padlock)  
Average filtration efficiency: 99.9% at 3 microns  
Axial inlets with target plate:  
primary inlet – 5" tubing with sleeve  
secondary inlet – inlet valve (Part No. VLV90083) for 1½" diameter hose

#### Base

Stationary; common frame with mounting pads

#### Available Options

Explosion-proof and premium efficiency motors  
NEMA 4, 7 and 9 starter enclosures  
Grounded filter bags  
Other filter bag materials  
Dirt can liners (with equalizing line)  
Inlet valve (Part No. VLV90100) for 2" diameter hose  
Island adapter kit (Part No. PLT90023)  
Bottom discharge conversion adapter to change to 6" tube horizontal on motor end (Part No. KAC90144)




| Performance Data                | Motor Data           | Separator Filter Data         |
|---------------------------------|----------------------|-------------------------------|
| Number of Operators _____       | HP _____ RPM _____   | Area: 56.5 sq. ft. _____      |
| Catalog No. _____               | Voltage _____        | Bag Quantity: 12 _____        |
| Discharge Pressure (PSIA) _____ | Phase _____ Hz _____ | Bag Catalog No.: 6445-N _____ |
| Inlet Temperature (°F) _____    | Enclosure _____      | Bag Material: _____           |

► Spencer may make improvements and dimensional changes to equipment designs based on market trends and requirements.

**For product selection assistance, please email [marketing@spencer-air.com](mailto:marketing@spencer-air.com) or visit our website at [www.spencerturbine.com](http://www.spencerturbine.com) to locate the Spencer representative in your area.**

Industravac® is a registered trademark of The Spencer Turbine Company.



The  **Spencer Turbine Company, 600 Day Hill Road, Windsor, CT 06095 USA**

*Blowers & Vacuum Systems with an Engineering Edge*

TEL 800.232.4321 ♦ 860.688.8361 ♦ FAX 860.688.0098 ♦ [www.spencerturbine.com](http://www.spencerturbine.com)





### Performance Data

| Volume (SCFM) | Vacuum (In. Hg) | Motor Hp | Catalog Number | Shipping Weight (lb.) |
|---------------|-----------------|----------|----------------|-----------------------|
| 740           | 7.6             | 30       | SD-430B        | 2000                  |
| 820           | 8.9             | 40       | SD-540B        | 2050                  |
| 1000          | 5.0             | 25       | SD-325B        | 1950                  |
| 1080          | 6.8             | 40       | SD-440B        | 2030                  |

Performance based on 70 °F inlet temperature at sea level.

### Materials of Construction

- Casing, separator, base, dirt can: ASTM A1011 hot-rolled steel
- Impellers: 5052-H34 aluminum
- Shaft: AISI-1045 hot-rolled bar steel
- Finish: epoxy primer with Spencer blue urethane topcoat

### Product Features

#### Vacuum Producer

Multistage centrifugal  
Standard overhung direct drive  
8" flanged upblast exhaust  
Average sound pressure level: 85 dBA at 3 ft.  
Factory performance tested

#### Motor

25, 30 or 40 HP, 3500 rpm  
208-230/460 volt, 3 phase, 60 Hz  
Open drip-proof  
Bearing life: 100,000 hours (L-10)

#### Separator

Tubular bag separator, shaker type: 36" diameter  
Multiple inverted filter bags: Quantity 24  
Filter bag area: 129 sq. ft.  
Filter bag material: cotton sateen (Part No. BVA90044)  
Filter bag diameter: 5" (Cat. No. 5575-N)  
External manual bag shaker  
Large, hinged inspection door  
Removable dirt can, cam actuated, capacity: 7½ cu. ft.  
Average filtration efficiency: 99.9% at 3 microns  
Dual axial inlets with target plate:  
primary inlet – 6" tubing with sleeve  
secondary inlet – inlet valve (Part No. VLV90083)  
for 1½" diameter hose

#### Base

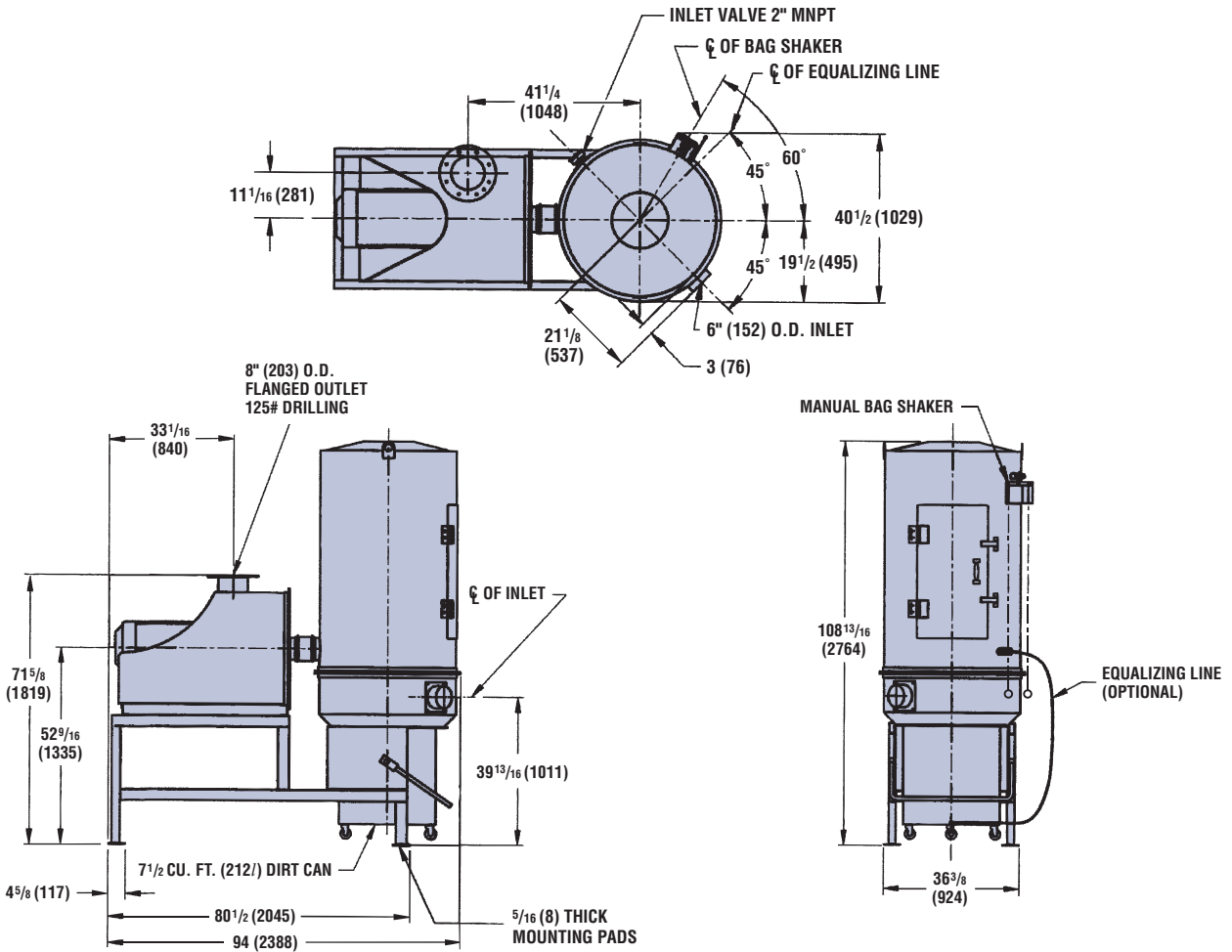
Stationary: common frame with mounting pads

#### Available Options

TEFC and explosion-proof motors  
Special motor voltages  
NEMA 4, 7 and 9 starter enclosures  
Grounded filter bags  
Other filter bag materials  
Dirt can liners (with equalizing line)  
Discharge silencer  
Discharge throttling valve  
Inlet valve (Part No. VLV90100) for 2" diameter hose  
4" threaded inlet to accommodate larger than 2" valve  
Motorized bag shaker  
Explosion relief vent  
Rear primary inlet position



**Stationary Model**




| Performance Data                | Motor Data           | Separator Filter Data         |
|---------------------------------|----------------------|-------------------------------|
| Volume (SCFM) _____             | HP _____ RPM _____   | Area: 129 sq. ft. _____       |
| Vacuum (In. Hg) _____           | Voltage _____        | Bag Quantity: 24 _____        |
| Discharge Pressure (PSIA) _____ | Phase _____ Hz _____ | Bag Catalog No.: 5575-N _____ |
| Inlet Temperature (°F) _____    | Enclosure _____      | Bag Material: _____           |

► Spencer may make improvements and dimensional changes to equipment designs based on market trends and requirements.

**For product selection assistance, please email [marketing@spencer-air.com](mailto:marketing@spencer-air.com) or visit our website at [www.spencerturbine.com](http://www.spencerturbine.com) to locate the Spencer representative in your area.**

Industravac® is a registered trademark of The Spencer Turbine Company.



The  **Spencer** Turbine Company, 600 Day Hill Road, Windsor, CT 06095 USA

Blowers & Vacuum Systems with an Engineering Edge

TEL 800.232.4321 ♦ 860.688.8361 ♦ FAX 860.688.0098 ♦ [www.spencerturbine.com](http://www.spencerturbine.com)

TDS\_296E Copyright ©2016 The Spencer Turbine Company Printed in USA 020116KBA





Spencer Industravac Series BJC with Jet-Clean Separator.

### Performance Data

| Volume (scfm) | Vacuum (in. Hg) | Motor hp | Catalog Number | Shipping Weight (lb.) |
|---------------|-----------------|----------|----------------|-----------------------|
| 300           | 8.0             | 15       | SB-715B-MOD-JC | 1135                  |
| 400           | 6.9             | 15       | SB-615B-MOD-JC | 1125                  |
| 420           | 4.9             | 10       | SB-410B-MOD-JC | 1050                  |
| 430           | 8.4             | 20       | SB-720B-MOD-JC | 1160                  |
| 520           | 5.7             | 15       | SB-515B-MOD-JC | 1115                  |
| 600           | 4.4             | 15       | SB-415B-MOD-JC | 1105                  |
| 610           | 6.1             | 20       | SB-620B-MOD-JC | 1150                  |

Performance based on 70 °F inlet temperature at sea level.

### Materials of Construction

- Casing, separator, base, dirt can: ASTM A1011 hot-rolled steel
- Impellers: 5052-H34 aluminum
- Shaft: AISI-1045 hot-rolled bar steel
- Finish: epoxy primer with Spencer blue urethane topcoat

### Product Features

#### Vacuum Producer

Multistage centrifugal  
Standard overhung direct drive  
6" tubing upblast exhaust  
Average sound pressure level: 83 dBA at 3 ft.  
Factory performance tested

#### Motor

10, 15 or 20 hp, 3500 rpm  
208-230/460 or 575 volt, 3 phase, 60 Hz  
Open drip-proof  
Bearing life: 100,000 hours (L-10)

#### Separator

Jet-Clean pulse design: 30" diameter  
Multiple cartridges: Quantity 8  
Filter area: 120 sq. ft.  
Filter material: PTFE Spun Bond (Part No. FIL90244)  
1" FNPT compressed air connection with pressure gauge  
110 volt timer board and NEMA 4 sequencer  
Differential pressure gauge  
5" x 10" inspection opening with bolt-on cover and gasket  
Large, hinged access door  
Removable dirt can, cam actuated, capacity: 4½ cu. ft.  
Average filtration efficiency: 99.9% at 3 microns  
Axial inlets with target plate:  
Primary inlet – 5" tubing with sleeve  
Secondary inlet – inlet valve  
(Part No. VLV90083) for 1½" diameter hose

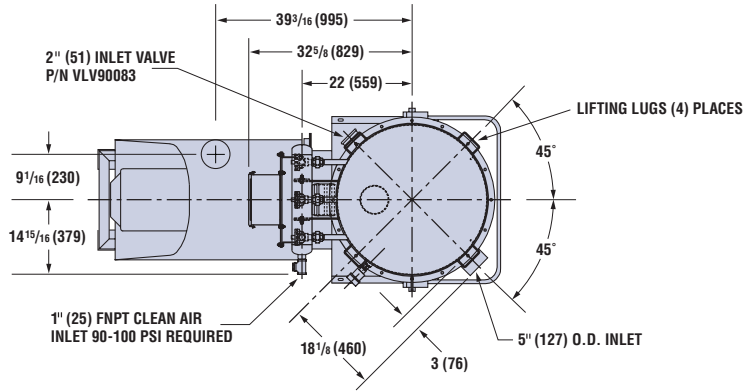
#### Base

Common frame with mounting pads

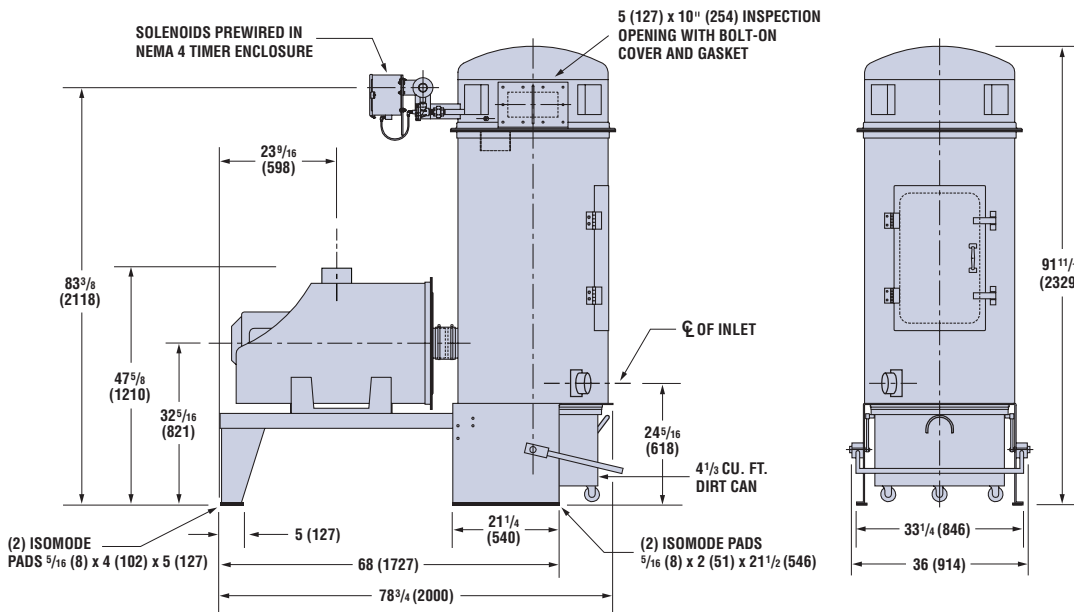
#### Available Options

TEFC and explosion-proof motors  
Special motor voltages  
NEMA 4, 7 or 9 starter enclosures  
Other filter materials  
Dirt can liners (with equalizing line)  
Discharge silencer  
Discharge throttling valve  
Inlet valve (Part No. VLV90100) for 2" diameter hose  
Explosion relief vent  
Rear primary inlet position  
Grounding lug and grounded cartridges  
NEMA 7 or 9 sequencers

**Dimensions:** Shown in inches / (mm)



The large door provides easy access to filter cartridges.




| Performance Data                | Motor Data           | Separator Filter Data                      |
|---------------------------------|----------------------|--------------------------------------------|
| Volume (scfm) _____             | hp _____ rpm _____   | Area: _____ 120 sq. ft.                    |
| Vacuum (in. Hg) _____           | Voltage _____        | Cartridge Quantity: _____ 8                |
| Discharge Pressure (psia) _____ | Phase _____ Hz _____ | Part No.: _____ FIL90244                   |
| Inlet Temperature (°F) _____    | Enclosure _____      | Filter Material: _____ PTFE Spun Bond Poly |

► Spencer may make improvements and dimensional changes to equipment designs based on market trends and requirements.

**For product selection assistance, please email [marketing@spencer-air.com](mailto:marketing@spencer-air.com) or visit our website at [www.spencerturbine.com](http://www.spencerturbine.com) to locate the Spencer representative in your area.**

Industravac® and Jet-Clean® are registered trademarks of The Spencer Turbine Company.



The  **Spencer** Turbine Company, 600 Day Hill Road, Windsor, CT 06095 USA

Blowers & Vacuum Systems with an Engineering Edge

TEL 800-232-4321 ♦ 860-688-8361 ♦ FAX 860-688-0098 ♦ [www.spencerturbine.com](http://www.spencerturbine.com)

TDS\_297 Copyright ©2014 The Spencer Turbine Company 090814KBA





Spencer Industravac® Series DJC with Jet-Clean® Separator.

### Performance Data

| Volume (scfm) | Vacuum (in. Hg) | Motor hp | Catalog Number | Shipping Weight (lb.) |
|---------------|-----------------|----------|----------------|-----------------------|
| 1000          | 5.0             | 25       | SD-325B-JC     | 1950                  |
| 740           | 7.6             | 30       | SD-430B-JC     | 2000                  |
| 1080          | 6.8             | 40       | SD-440B-JC     | 2030                  |
| 820           | 8.9             | 40       | SD-540B-JC     | 2050                  |

Performance based on 70 °F inlet temperature at sea level.

### Materials of Construction

- Casing, separator, base, dirt can: ASTM A1011 hot-rolled steel
- Impellers: 5052-H34 aluminum
- Shaft: AISI-1045 hot-rolled bar steel
- Finish: epoxy primer with Spencer blue urethane topcoat

### Product Features

#### Vacuum Producer

- Multistage centrifugal
- Standard overhung direct drive
- 8" flange upblast exhaust
- Average sound pressure level: 83 dBA at 3 ft.
- Factory performance tested

#### Motor

- 25, 30 or 40 hp, 3500 rpm
- 208-230/460 or 575 volt, 3 phase, 60 Hz
- Open drip-proof
- Bearing life: 100,000 hours (L-10)

#### Separator

- Jet-Clean pulse design: 36" diameter
- Multiple cartridges: Quantity 13
- Filter area: 475 sq. ft.
- Filter material: Spun Bond Polyester
- 1" FNPT compressed air connection with pressure gauge
- 110 volt timer board and NEMA 4 sequencer
- Differential pressure gauge
- 5" x 10" inspection opening with bolt-on cover and gasket
- Large, hinged access door
- Removable dirt can, cam actuated, capacity: 7½ cu. ft.
- Average filtration efficiency: 99.9% at 3 microns
- Axial inlets with target plate:
  - Primary inlet – 6" tubing with sleeve
  - Secondary inlet – inlet valve (Part No. VLV90083) for 1½" diameter hose

#### Base

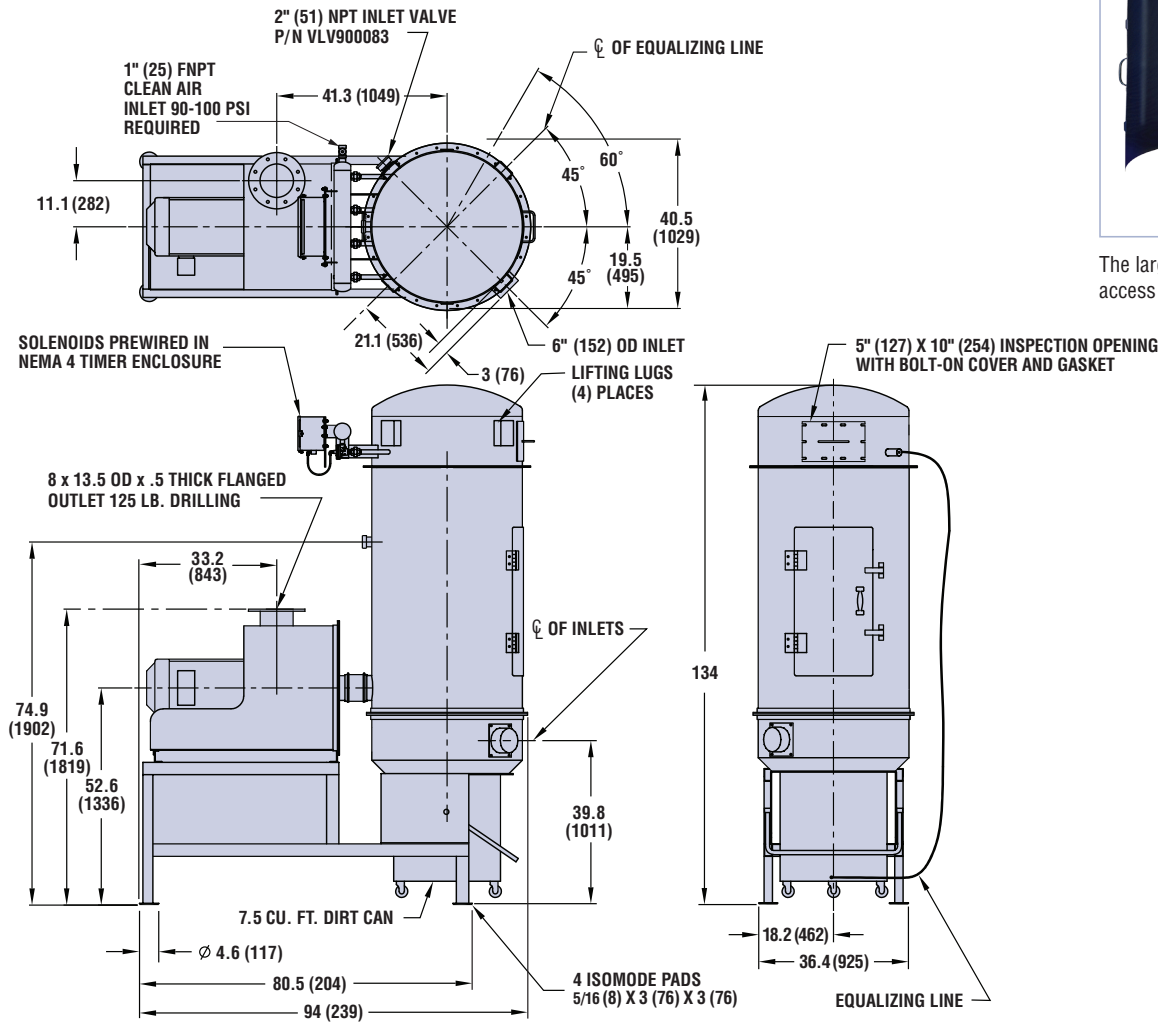
- Common frame with mounting pads

#### Available Options

- TEFC and explosion-proof motors
- Special motor voltages
- NEMA 4, 7 or 9 controls
- Other filter materials
- Dirt can liners (with equalizing line)
- Discharge silencer
- Discharge throttling valve
- Inlet valve (Part No. VLV90100) for 2" diameter hose
- Explosion relief vent
- Rear primary inlet position
- Grounding lug and grounded cartridges
- NEMA 7 or 9 sequencer, timer and solenoids

Ships in two pieces. Bolt separator to frame at jobsite.

Dimensions: Shown in inches / (mm)



The large door provides easy access to filter cartridges.

| Performance Data                | Motor Data           | Separator Filter Data                      |
|---------------------------------|----------------------|--------------------------------------------|
| Volume (scfm) _____             | hp _____ rpm _____   | Area: _____ 475 sq. ft.                    |
| Vacuum (in. Hg) _____           | Voltage _____        | Cartridge Quantity: _____ 13               |
| Discharge Pressure (psia) _____ | Phase _____ Hz _____ | Part No.: _____                            |
| Inlet Temperature (°F) _____    | Enclosure _____      | Filter Material: _____ Spun Bond Polyester |

► Spencer may make improvements and dimensional changes to equipment designs based on market trends and requirements.

**For product selection assistance, please email [marketing@spencer-air.com](mailto:marketing@spencer-air.com) or visit our website at [www.spencerturbine.com](http://www.spencerturbine.com) to locate the Spencer representative in your area.**

Industravac® and Jet-Clean® are registered trademarks of The Spencer Turbine Company.



The  **Spencer** Turbine Company, 600 Day Hill Road, Windsor, CT 06095 USA

*Blowers & Vacuum Systems with an Engineering Edge*

TEL 800.232.4321 ♦ 860.688.8361 ♦ FAX 860.688.0098 ♦ [www.spencerturbine.com](http://www.spencerturbine.com)





Industravac® Series E Vacuum Producer and Separator components interconnected with piping. (Note: Components ship in (3) pieces.)

### Number of Operators

| Catalog Number | Numbers of Operators* | Motor HP |
|----------------|-----------------------|----------|
| SE410-C        | 4                     | 10       |
| SE415-C        | 6                     | 15       |
| SE420-C        | 8                     | 20       |
| SE510-C        | 3                     | 10       |
| SE515-C        | 5                     | 15       |
| SE520-C        | 7                     | 20       |
| SE525-C        | 8                     | 25       |
| SE615-C        | 4                     | 15       |
| SE620-C        | 5                     | 20       |
| SE625-C        | 7                     | 25       |

Performance based on 70 °F inlet temperature at sea level.

\*Based on 100 SCFM/Operator with 1½" diameter x 15 feet hose.

### Materials of Construction

- Casing, separator, base: ASTM A1011 hot-rolled steel
- Impellers: 5052-H34 aluminum
- Shaft: AISI-1045 hot-rolled bar steel
- Removable debris receptacle: High density polyethylene
- Finish: Epoxy primer with Spencer blue urethane topcoat

### Product Features

#### Vacuum Producer

- Multistage centrifugal
- Standard overhung direct drive
- Bottom exhaust with silencer (Patent No. 4,874,410)
- Average sound level from 84 dBA at 3 feet
- Factory performance tested

#### Motor

- 10, 15, 20 or 25 HP, 3500 rpm
- 200-230/460 or 575 volt, three phase, 60 Hz
- TEFC
- Bearing life: 100,000 hours (L-10)

#### Separator

- Tubular bag separator, shaker type: 30" diameter
- Multiple-inverted filter bags: Quantity 12
- Filter bag area: 56.5 sq. ft
- Filter bag material: cotton sateen (P/N BVA90051)
- Filter bag diameter: 6" (Cat. No. 6445-N)
- Internal manual bag shaker
- Large, hinged inspection door (accepts padlock)
- Removable debris receptacle, capacity: 2.6 cu. ft. (small hinged access door accepts padlock)
- Average filtration efficiency: 99.9% at 3 microns
- Axial inlets with target plate:
  - primary inlet – 5" tubing with sleeve
  - secondary inlet – inlet valve (P/N VLV90083) for 1½" diameter hose
- Interconnecting kit (P/N KIO90021): (2) 90° mitered elbows (P/N ELT90689) and (3) rubber sleeve/clamp kits (P/N KAC90062)

#### Available Options

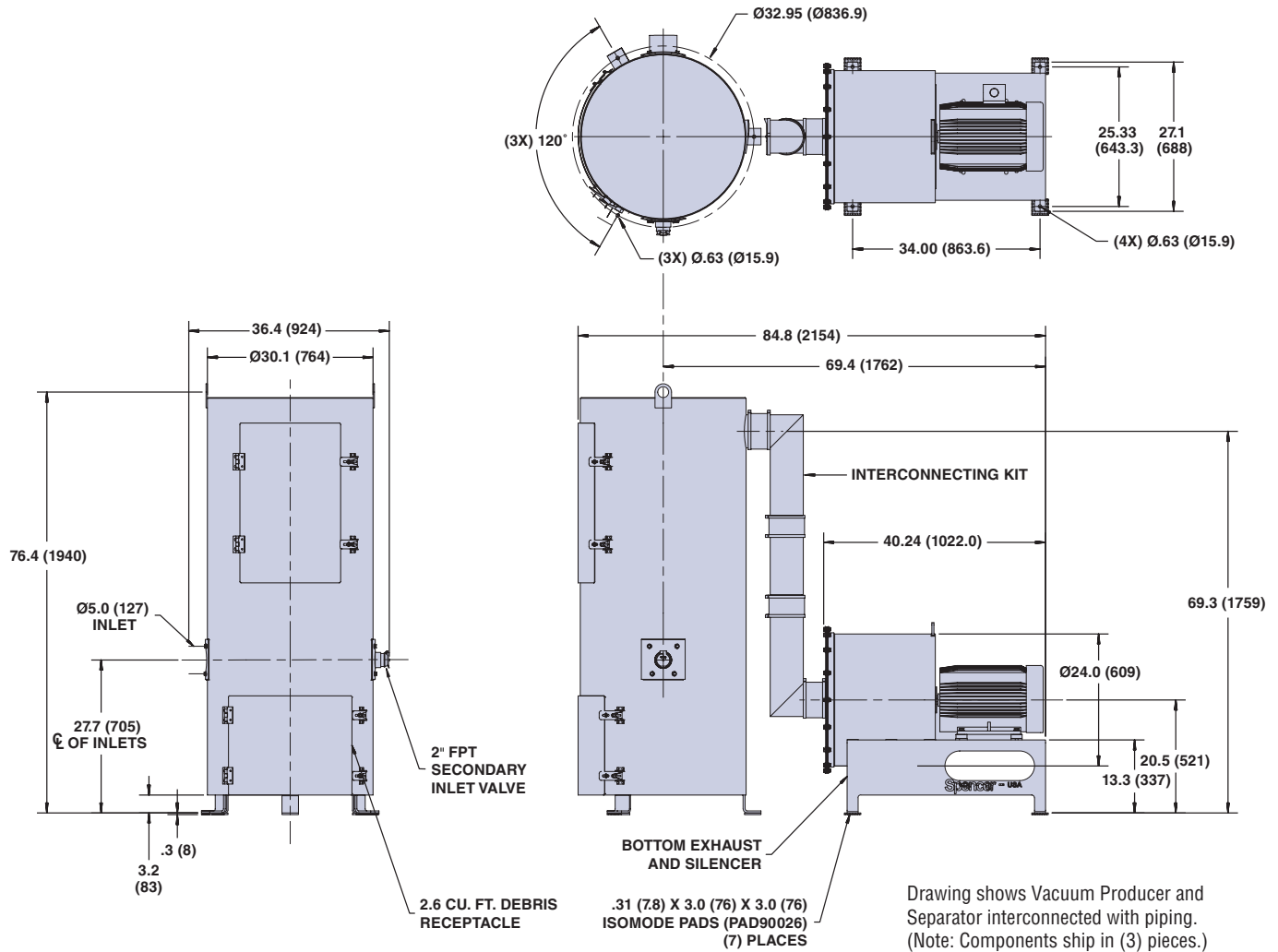
- Explosion-proof and premium efficiency motors
- NEMA 4, 7 and 9 starter enclosures
- Grounded filter bags
- Other filter bag materials
- Inlet valve (P/N VLV90100) for 2" diameter hose
- Island adapter kit (P/N PLT90023)
- Bottom discharge conversion adapter to change to 6" tube horizontal on motor end (P/N KAC90267)

# Industravac® Series E

Component Models

Vacuum Producer | Separator | Interconnecting Kit

► **Dimensions:** Shown in inches / (mm)



| Performance Data                | Motor Data           | Separator Filter Data         |
|---------------------------------|----------------------|-------------------------------|
| Number of Operators _____       | HP _____ RPM _____   | Area: 56.5 sq. ft. _____      |
| Catalog No. _____               | Voltage _____        | Bag Quantity: 12 _____        |
| Discharge Pressure (PSIA) _____ | Phase _____ Hz _____ | Bag Catalog No.: 6445-N _____ |
| Inlet Temperature (°F) _____    | Enclosure _____      | Bag Material: _____           |

► Spencer may make improvements and dimensional changes to equipment designs based on market trends and requirements.

**For product selection assistance, please email [marketing@spencer-air.com](mailto:marketing@spencer-air.com) or visit our website at [www.spencerturbine.com](http://www.spencerturbine.com) to locate the Spencer representative in your area.**

Industravac® is a registered trademark of The Spencer Turbine Company.



The  **Spencer Turbine Company, 600 Day Hill Road, Windsor, CT 06095 USA**

TEL 800.232.4321 ♦ 860.688.8361 ♦ FAX 860.688.0098 ♦ [www.spencerturbine.com](http://www.spencerturbine.com)



*Car Care Vacuum Systems with an Engineering Edge*