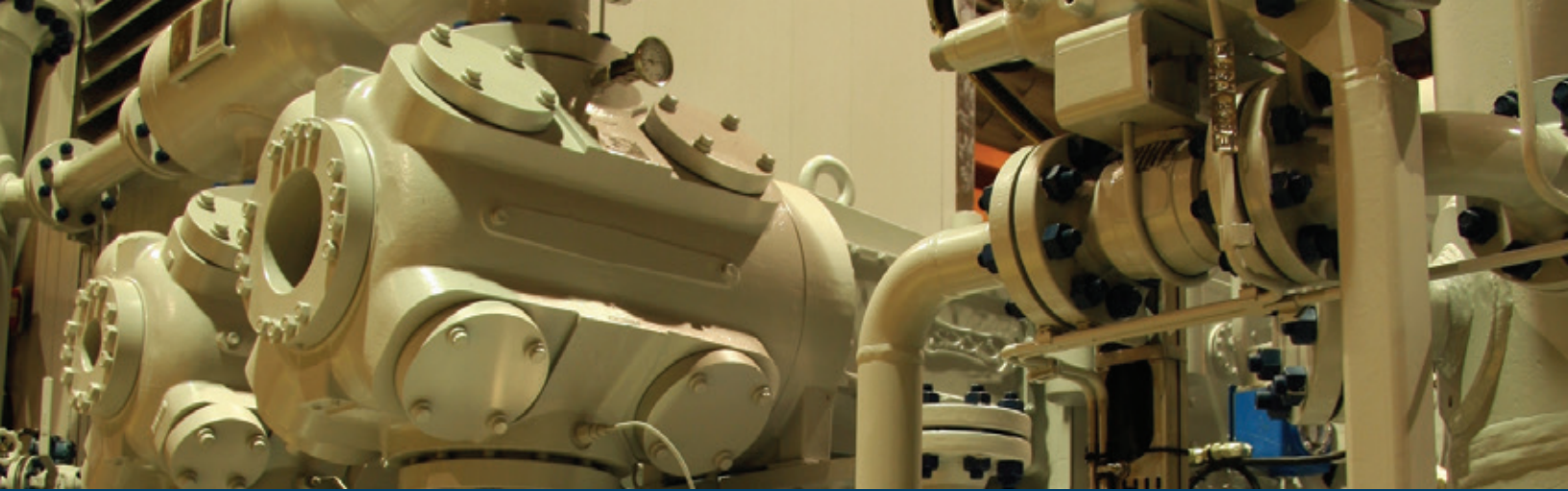


Sealing & Wear Products



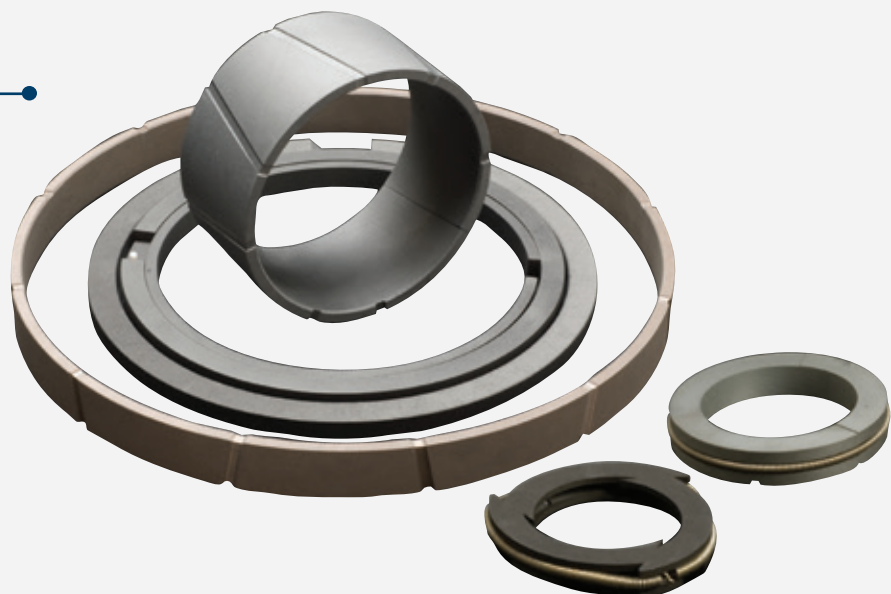


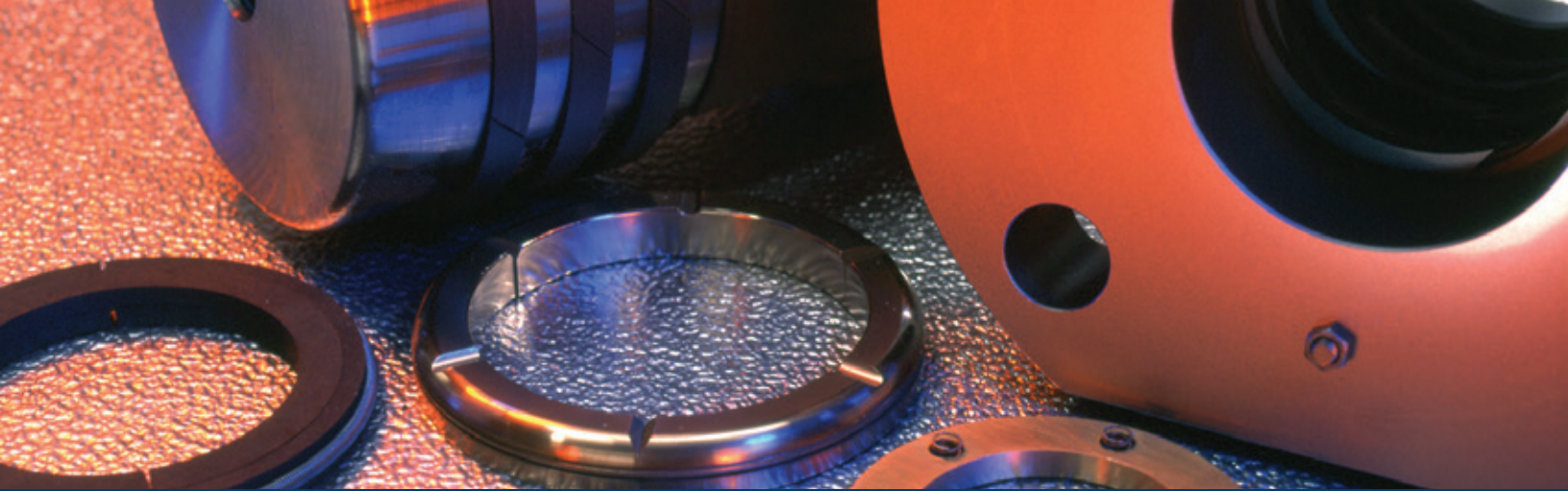
Quality Components. Expert Support.

CPI, part of the Howden group, designs and manufactures a wide range of high quality sealing and wear components, custom sized according to the needs of the compressor. Our unmatched technical knowledge allows us to select the ideal material for any application, including metallic, non-metallic or one of CPI's many special polymer alloys.

Sealing and Wear Components:

- **Pistons and Piston Rods**
- **Piston and Rider Rings**
- **Packing Rings**
- **Oil Wiper Rings**
- **Packing Cases**
- **Hyper Components**



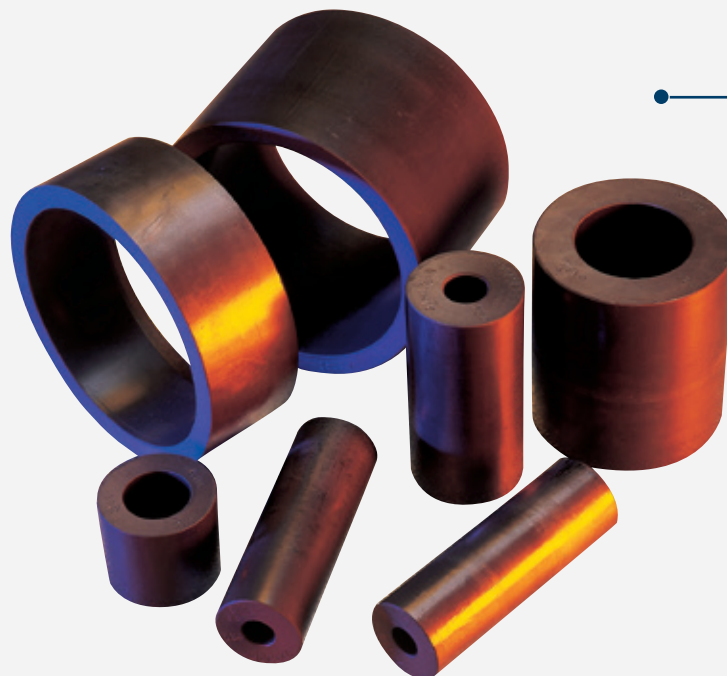


Replacement Parts

CPI is a major supplier of spare parts, with facilities dedicated to the markets we serve. Experienced technicians will help find and select the right product, provide installation assistance and offer advice on alternate materials, options and processes.

Materials Technology

The development of CPI Special Polymer Alloys revolutionized piston and packing ring performance in reciprocating compressors. Our focus on the development of new and improved materials has led to enhanced operations and improved reliability in the compressor industry. Our innovations in high-tech polymers and novel manufacturing processes have opened the door to further developments that will improve our customer's compressor operations.





Design

CPI is a world leader in designing innovative, reliable solutions for reciprocating compressors. CPI technologies are continually evolving to meet the needs of today's rapidly changing industries.

Quality Manufacturing

CPI is dedicated to manufacturing and distributing components in compliance with the most rigorous international standards for quality and management. Quality assurance is a core value that underscores the meticulous attention to detail applied to products and processes in each of our facilities worldwide.



CPI leverages its expansive global network to efficiently solve problems and meet customer needs all around the world with minimal downtime. In all facilities, from supply and distribution to repair, CPI prides itself on being a dynamic and responsive customer partner.

Technical Support

With industry-leading expertise, our technical support team is highly adept at diagnosing and remediating challenging problems, particularly in situations where a previous material has failed. CPI technicians are prepared to provide expert technical advice, support and solutions for even the most extreme applications issues.



CPI, part of the Howden group, is an industry-leading manufacturer of precision-engineered components for reciprocating compressors used in petrochemical, refining, natural gas, and offshore industries. The CPI product range includes packing, piston and rider rings and a complete line of compressor valves designed to provide each customer with maximum performance and reliability for their application. In addition, CPI offers the highest quality lubrication system technology for further compressor efficiency and protection.