



CAPTURED PROXIMITY SWITCH

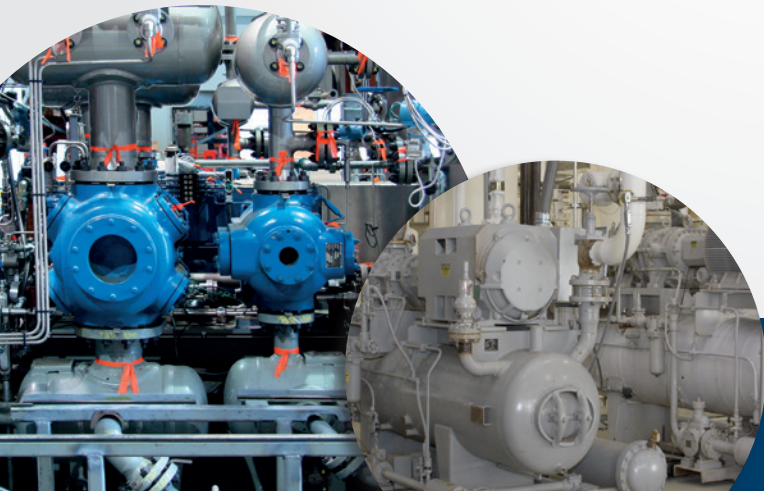
CPI's captured proximity switch is an electronic cycle indicator designed for use with all compressor and grease divider blocks.

The captured proximity switch, a single pole single throw magnetically operated reed switch, sends a dry contact signal to any PLC-style control panel or directly to the lubrication monitor, such as Proflo® PF1 monitoring device, if it detects a reduction in the cycle time.



FEATURES

- Magnetically operated reed switch – unlimited duty cycle
- Custom machined stainless steel or aluminum housing
- Captured magnet assembly makes it impossible to lose internal parts of the assembly
- Compatible with CPI HP+, CPI XD+, DropsA®, Trabon®, SB or Lincoln divider block / valve systems



TECHNICAL SPECIFICATIONS

MATERIAL	Aluminum or Stainless Housing
TEMPERATURE RANGE	-40° F to 185° F
SWITCH RATING	300 VDC - 200 mA max

RATINGS

Explosion-proof

CSA Certified

CE Certified

Class 1, Division 1, Group A, B, C, D, and T4

Certifications:



II 2 G EEx mb IICT4 Gb
ITS14ATEX88093X



-20°C ≤ Tamb ≤ +80°C IP54
0359

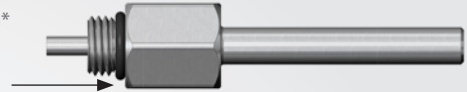


CI I: Zone 1: AEx mb IICT4 Gb
CI I: Zone 1: AEx mb IICT4 Gb

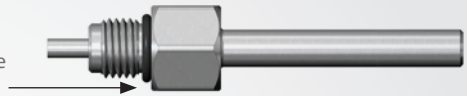
Intertek
5000500

Magnet Assemblies

SBCO & Trabon*
O-Ring Seal
7/16" - 20



Lincoln
O-Ring Seal
Extended Nose
7/16" - 20



DropsA
No Gasket
Raised Shoulder



*For use on CPI HP+ and XD+ Divider Blocks

Proximity Switches (with magnet assembly)

PART NO.	DESCRIPTION
6500400000PRXT	Proximity Switch with Magnet Assembly (Trabon)
6500400000PRXD	Proximity Switch with Magnet Assembly (DropsA)
6500400000PRXL	Proximity Switch with Magnet Assembly (Lincoln)

Replacement Proximity Switch Components

PART NO.	DESCRIPTION
650040000PRXTMA	Proximity Switch Magnet Assembly (Trabon)
650040000PRXDMA	Proximity Switch Magnet Assembly (DropsA)
650040000PRXLMA	Proximity Switch Magnet Assembly (Lincoln)

DropsA® is a registered trademark of DropsA USA, Inc. Trabon® is a registered trademark of Graco, Inc.



CPI, part of the Howden group, provides industry leading lubrication system products and services, partnering with our customers to develop individual solutions to their unique lubrication needs. From individual components to complete, turnkey systems, we can provide the resources and expertise to ensure your compressor operates at peak performance and longevity.