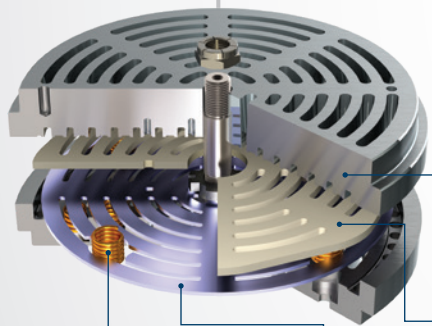




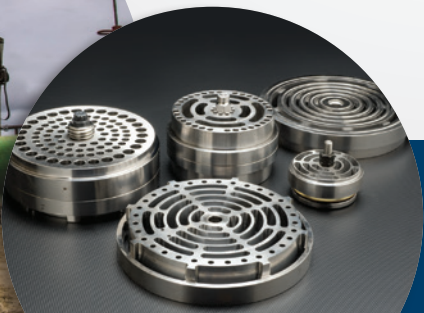
Ported Plate Valves

CPI, part of the Howden group, provides customers with a comprehensive range of metallic and non-metallic Ported Plate Valve assemblies and components for air and process gas compressors operating in a wide range of different applications. Each Ported Plate Valve is custom designed for its individual application to match specific compressor operating conditions.



DESIGN FEATURES

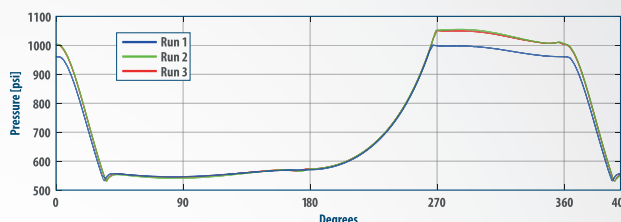
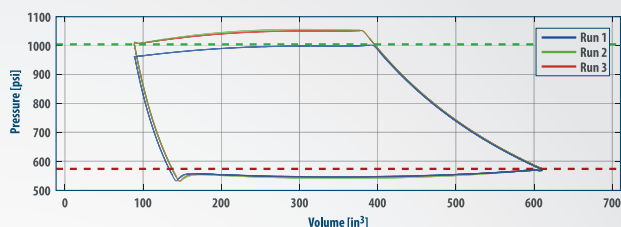
- Seats and guards are offered in Ductile Iron and 4140 alloy steel for standard valves and in 17-4 stainless steel for corrosive applications
- Non-metallic sealing component materials provide excellent chemical resistance, high temperature tolerances and strong impact capabilities in a wide variety of applications
- Metallic sealing and dampening plates are manufactured from high quality, heat-treated stainless steel
- Springs are offered in chrome silicon and Hastelloy C materials



Ported Plate Valves

FEATURES

- Non-metallic sealing component materials provide excellent chemical resistance, high temperature tolerances and strong impact capabilities in a wide variety of applications
- Easily maintained and reconditioned
- Ideal for medium and high-pressure compressors operating at high speed and varying degrees of capacity
- Available with finger and plug-type unloaders
- Custom spring design for each application to optimize opening and closing times
- Capable of operating across a wide range:
 - temperature over 500°F/260°C
 - pressure over 5000 psi/345 bar
- Nose diameter —1.57 in/40 mm and up
- Suitable for:
 - both lubricated and non-lubricated compressors
 - sour gas applications
 - compressor speed up to 1500 RPM



CPI provides comprehensive compressor valve performance analysis.

