



Technical Bulletin 17-1

MODEL P55 LUBRICATOR PUMP UPDATE

Improvements have been made to the interworkings of the Model P55 pumps adding to the longevity and efficiency of the pumps.

These products will serve as direct replacements for the current model 55 pumps which are being phased out as inventory is depleted. Current customers will not be impacted by internal part changes.

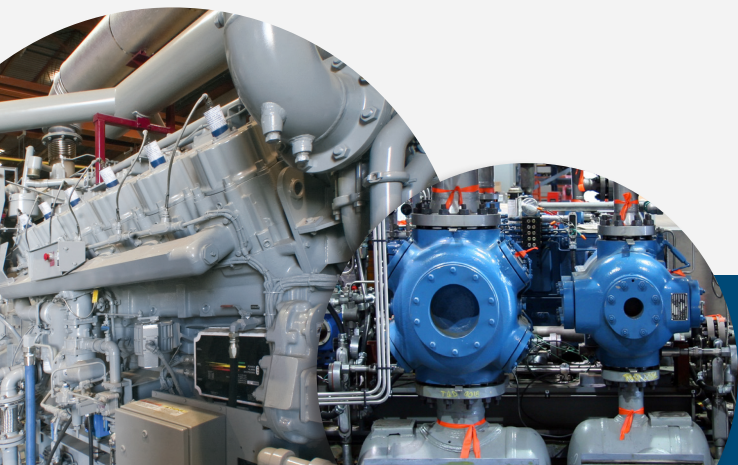
A CPI product brochure has been released detailing the part numbers.

If you have any questions, please contact CPI Customer Service at: +1-281-207-4600.

Thank you for your continued support of CPI, part of the Howden group.



CE  II 2 G IIC T4



 **CPI**
by Howden

IMPROVED PUMP FEATURES

DISCHARGE CONNECTOR

- Nickel plated steel for improved corrosion resistance
- CPI ORB port for O-ring seal fittings that eliminates the need for a sealant or a standard 1/8" NPT fitting
- Precision check valves for consistent performance and long life

SIGHT GLASS

- Single piece sight glass eliminates vacuum leaks and incorrect adjustments
- Heavy duty Pyrex sight glass improves oil drop visibility
- Precision drip tube provides consistent drop counts

PUMP BODY AND ASSEMBLY

- Precision check valve for consistent, long life performance
- Improved overall geometry and finish for better sealing and performance
- Addition of purge screw to aid air bleeding and ease of start-up
- Corrosion resistant finish for long term environmental exposure

OUTPUT REGULATOR

- Enhanced sealing of adjustment shaft eliminates water ingress and sunlight degradation of previous rubber boot
- Improved lock nut:
 - Eliminates adjustment changes due to vibration
 - Has wrench flats that can be torqued and locked versus finger tight knurling
 - Sealing eliminates water ingress
- Nickel plated improves corrosion resistance

PISTON AND CYLINDER

- Upgraded materials and clearances/geometry increase output and extend operating life
- Improved mating with rocker arm extends life and ensures consistent output
- Piston/cylinder assembly remains field serviceable

ROCKER ARM

- Smoother operating rocker arm:
 - Reduces wear which increases operating life
 - Provides precision piston travel which reduces the need for readjustment

OVERALL ASSEMBLY

- Model 55 pumps are ATEX Zone 1 certified
- Identification tags clarify pump model
- Stronger mounting bolts with o-ring seals eliminate water ingress
- Upgraded gasket seal to award-winning MULTI-SWELL™ Style 3760 gasket material optimizes compression set and removes loss of bolt torque which eliminates water ingress and oil leakage
- Pumps show a 20% improvement in oil output and efficiency at increased operating pressures over previous P55 design

* Output curves over operating pressure range to aid system designs are available

