

Technical Bulletin 18-1

RATCHET LUBRICATOR IMPROVEMENT

Ratchet lubricators will be transitioning from the old design which used an internally mounted ratcheting gear assembly shown in Figure 1, to an externally mounted ratchet shown in Figure 2. The improved ratchet lubricator will retain the same fit and function, with better performance.

If you have any questions, please contact CPI Customer Service at: +1-281-207-4600.

Thank you for your continued support of CPI, part of the Howden group.

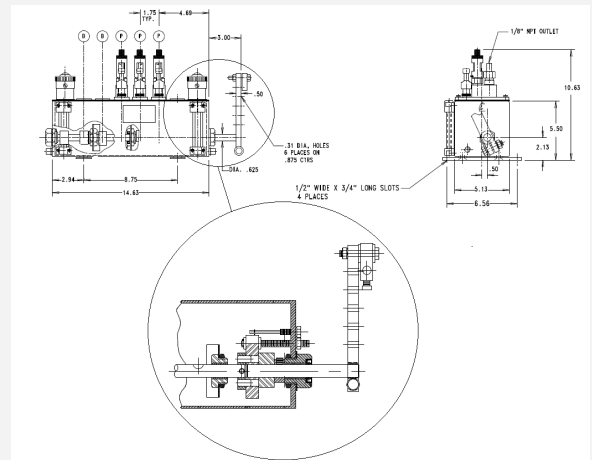


Figure 1

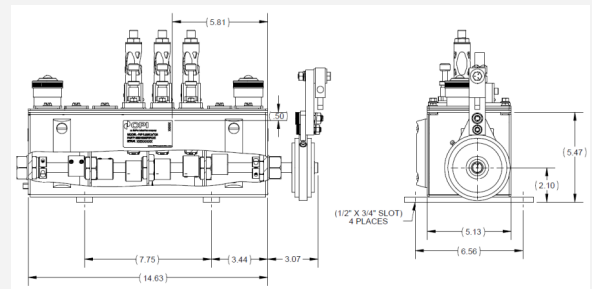


Figure 2

