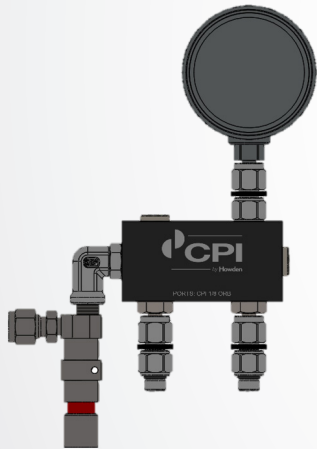
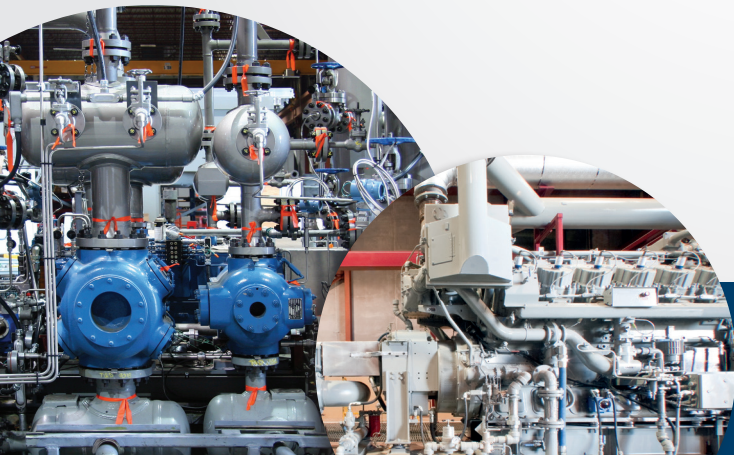


MANIFOLDS

CPI's precise manifold bars are used to create a more efficient lubrication system. The wide range of high quality suction and discharge manifold kits offered by CPI, part of the Howden group, can be configured to fit any application.



The improved manifold bars are capable of handling operating pressure up to 8,000 psi. Discharge manifold bars combine the oil output of two or more pumps and allow for installation of accessories such as a pressure gauge and a pressure relief device. Each discharge manifold bar and fittings in the kit feature CPI 1/8" ORB threaded connections, which utilize an O-ring seal instead of the traditional tapered thread seal, to eliminate leakage past the threads. Suction manifold bars diverge a single oil supply to two or more pumps. Each suction manifold bar features SAE-6 inlet ports and CPI 1/8" ORB outlet ports.



FEATURES

- Anodized 7075 -T651/ T7351 aluminum bars
- 316 stainless steel fittings
- Glycerin filled pressure gauge with dual units (psi/bar)
- Pressure gauge with tube stem mount eliminates the need for sealant, eliminates leaks, and allows easy field positioning for optimal viewing of the gauge
- CPI 1/8" ORB and SAE-6 ports eliminate the need for sealant
- CPI 1/8" ORB port is compatible with standard 1/8" NPT fittings for field service if required
- Manifold kits provide flexibility to assemble the manifold in different orientations to fit various applications
- Kits are available with a rupture disc assembly or POPR® pop open pressure relief valve assembly as a hydraulic pressure relief device

Suction Manifolds & Kits

All manifold bars and fittings in the kit feature CPI 1/8" ORB ports and SAE-6 ports

PART NO.	PART TYPE	DESCRIPTION
65005000MSK22AS	Manifold Suction Bar Kit	Ariel* 2 port manifold bar, (CPI 1/8" ORB ports, SAE inlet ports), 1.5 in center-to-center hole spacing, 2 black ring fittings
65005000MSK22S	Manifold Suction Bar Kit	2 port manifold bar (CPI 1/8" ORB ports, SAE inlet ports), 2 black ring fittings
65005000MSK42S	Manifold Suction Bar Kit	4 port manifold bar (CPI 1/8" ORB ports, SAE inlet ports), 2 center inlets plugged, 2 black ring fittings
65005000MSK44S	Manifold Suction Bar Kit	4 port manifold bar (CPI 1/8" ORB ports, SAE inlet ports), 4 black ring fittings

Note: Center-to-center hole spacing for outlet ports is 1.75" except part number 65005000MSK22AS

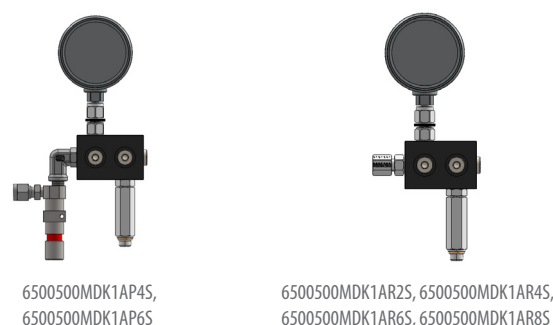
*Ariel is not affiliated with Howden



Manifold Discharge Bar Standard

One pump kit with CPI 1/8" ORB connection

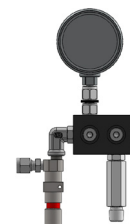
PART NO.	PRESSURE GAUGE	PRESSURE RELIEF
6500500MDK1AP4S	4,000 psi	3,500 psi POPR
6500500MDK1AP6S	6,000 psi	5,500 psi POPR
6500500MDK1AR2S	2,000 psi	1,450 psi Rupture
6500500MDK1AR4S	4,000 psi	3,250 psi Rupture
6500500MDK1AR6S	6,000 psi	5,500 psi Rupture
6500500MDK1AR8S	8,000 psi	6,400 psi Rupture



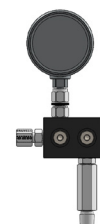
Manifold Discharge Bar Standard Cont.

One pump kit with 1/4" NPT connection

PART NO.	PRESSURE GAUGE	PRESSURE RELIEF
6500500MDK1NP4S	4,000 psi	3,500 psi POPR
6500500MDK1NP6S	6,000 psi	5,500 psi POPR
6500500MDK1NR2S	2,000 psi	1,450 psi Rupture
6500500MDK1NR4S	4,000 psi	3,250 psi Rupture
6500500MDK1NR6S	6,000 psi	5,500 psi Rupture
6500500MDK1NR8S	8,000 psi	6,400 psi Rupture



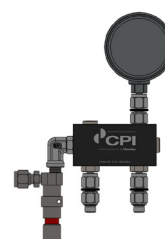
6500500MDK1NP4S,
6500500MDK1NP6S



6500500MDK1NR2S, 6500500MDK1NR4S,
6500500MDK1NR6S, 6500500MDK1NR8S

Two pump kit with CPI 1/8" ORB connection

PART NO.	PRESSURE GAUGE	PRESSURE RELIEF
6500500MDK22P4S	4,000 psi	3,500 psi POPR
6500500MDK22P6S	6,000 psi	5,500 psi POPR
6500500MDK22R2S	2,000 psi	1,450 psi Rupture
6500500MDK22R4S	4,000 psi	3,250 psi Rupture
6500500MDK22R6S	6,000 psi	5,500 psi Rupture
6500500MDK22R8S	8,000 psi	6,400 psi Rupture



6500500MDK22P4S,
6500500MDK22P6S



6500500MDK22R2S, 6500500MDK22R4S,
6500500MDK22R6S, 6500500MDK22R8S

Two pump kit with CPI 1/8" ORB connection (Four port bar)

PART NO.	PRESSURE GAUGE	PRESSURE RELIEF
6500500MDK42P4S	4,000 psi	3,500 psi POPR
6500500MDK42P6S	6,000 psi	5,500 psi POPR
6500500MDK42R2S	2,000 psi	1,450 psi Rupture
6500500MDK42R4S	4,000 psi	3,250 psi Rupture
6500500MDK42R6S	6,000 psi	5,500 psi Rupture
6500500MDK42R8S	8,000 psi	6,400 psi Rupture



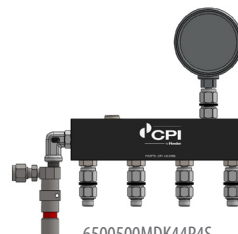
6500500MDK42P4S,
6500500MDK42P6S



6500500MDK42R2S, 6500500MDK42R4S,
6500500MDK42R6S, 6500500MDK42R8S

Four pump kit with CPI 1/8" ORB connection

PART NO.	PRESSURE GAUGE	PRESSURE RELIEF
6500500MDK44P4S	4,000 psi	3,500 psi POPR
6500500MDK44P6S	6,000 psi	5,500 psi POPR
6500500MDK44R2S	2,000 psi	1,450 psi Rupture
6500500MDK44R4S	4,000 psi	3,250 psi Rupture
6500500MDK44R6S	6,000 psi	5,500 psi Rupture
6500500MDK44R8S	8,000 psi	6,400 psi Rupture



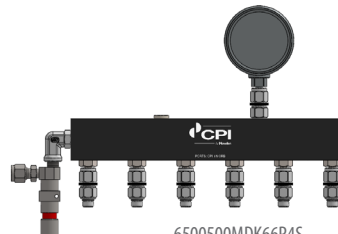
6500500MDK44P4S,
6500500MDK44P6S



6500500MDK44R2S, 6500500MDK44R4S,
6500500MDK44R6S, 6500500MDK44R8S

Six pump kit with CPI 1/8" ORB connection

PART NO.	PRESSURE GAUGE	PRESSURE RELIEF
6500500MDK66P4S	4,000 psi	3,500 psi POPR
6500500MDK66P6S	6,000 psi	5,500 psi POPR
6500500MDK66R2S	2,000 psi	1,450 psi Rupture
6500500MDK66R4S	4,000 psi	3,250 psi Rupture
6500500MDK66R6S	6,000 psi	5,500 psi Rupture
6500500MDK66R8S	8,000 psi	6,400 psi Rupture



6500500MDK66P4S,
6500500MDK66P6S



6500500MDK66R2S, 6500500MDK66R4S,
6500500MDK66R6S, 6500500MDK66R8S

Additional Manifold Bars & Fittings

Additional manifold bars and fittings are used to manifold two or more gravity pumps together to one common oil supply.

Gravity Pump Valve Kit: Each kit includes (2) 65005000042TAOR tube adaptors and (1) 6500500000PV4D4 valve.

PART NO.	DESCRIPTION
6500500000MVK1	Manifold valve kit for gravity pumps, CPI 1/8" ORB

Manifold Bars: Each manifold bar includes (2) SAE-6 port plugs for possible inlet ports and (1) CPI 1/8" ORB port plug for every outlet port.

PART NO.	DESCRIPTION
650050000MSK20S	2 Port Manifold Bar
650050000MSK40S	4 Port Manifold Bar
650050000MSK60S	6 Port Manifold Bar

Fittings

PART NO.	DESCRIPTION
6500500000PV4D4	Valve, 1/4" Turn, 1/4" Tube Both Ends
65005000042TAOR	Tube Adapter, CPI 1/8" ORB x 1/4" Tube Stub
6500522EXTOR17S	Adapter, CPI 1/8" ORB Male X CPI 1/8" ORB Female

Gravity Pump Manifold Bracket Kit

PART NO.	DESCRIPTION
650140000095797	Manifold Bracket Kit



6500500000MVK1



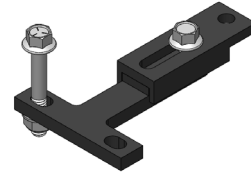
650050000MSK20S



650050000MSK40S



650050000MSK60S



650140000095797



CPI, part of the Howden group, is an industry-leading manufacturer of precision-engineered components for reciprocating compressors used in petrochemical, refining, natural gas, and offshore industries. The CPI product range includes packing, piston and rider rings, and a complete line of compressor valves designed to provide each customer with maximum performance and reliability for their application. In addition, CPI offers the highest quality lubrication system technology for further compressor efficiency and protection.