

WHY UPGRADE?

Your On-Call Turboexpander Experts

Contact us today for
control system design,
upgrades and support
services.

+1855 FXTurbo™
24/7/365
Support Services

© 2021 L.A. Turbine Corporation. All rights reserved.
Printed in the USA. 1002_091821

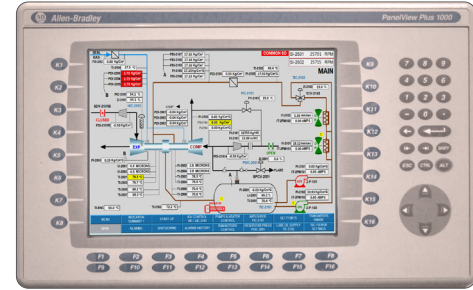
Control System Design, Build & Service

Reliability and Sustainability


Enhance turboexpander reliability and the ability to monitor, assess and obtain operating information with a control panel upgrade, regardless of the OEM make or model. With automated programmable logic controllers (PLC), human machine interface (HMI) panels, and a distributed control system (DCS), operators receive advanced levels of real time operational and performance data, can automate and customize safety shutdowns, plus improve overall network connectivity.

Reasons to Upgrade:

- If you have older or obsolete equipment, machine reliability and parts availability become an issue
- If your current system features obsolete pneumatic controls, gauges or outdated HMI panels
- If you are experiencing intermittent or ongoing tripping and want better diagnostic and historical data
- If after a unit failure, you lack enough data to resolve root cause(s) and prevent recurrence
- To get faster access to more advanced operational data
- To improve connectivity with the main DCS



LAT HMI Panel Upgrade


A Chart Industries Company

www.LATurbine.com

L.A. Turbine is a recognized leader in aftermarket repair, redesign, maintenance and production of spare parts for all LAT & non-OEM brands and configurations.

The company is also an OEM of turboexpanders for hydrocarbon processing, geothermal power generation and other industrial power recovery or refrigeration applications.

A global FX-TURBO Field Service Team provides diagnostics, maintenance and emergency support 24/7/365.

24/7/365
Support Services
+1855 FXTurbo™
+1 855 398 8726
service@LATurbine.com



Turboexpander Control System Upgrades

PLC & HMI Options

L.A. Turbine (LAT) performs turboexpander control system upgrades for any OEM turboexpander brand and if desired, will integrate other control system manufacturers in the enhanced design including Allen-Bradley, Siemens, Emerson and Triconex.

LAT Capabilities

LAT provides full-service in-house design, manufacturing, programming and testing plus on-site control system installation services including:

- Manufactures control systems in varied sizes and configurations including dual-redundant and Safety Integrity Level (SIL) capable PLCs
- Designs and fabricates spare or replacement parts
- Upgrades switches and gauges to indicating transmitters
- Offers optional programming for performance monitoring of bearing temperature, vibration and speed
- Provides optional integrated or remote DCS communication capabilities via Modbus or Ethernet
- Delivers upgrades compliant with:
 - Industry standards: API 670
 - Electrical standards:
 - IEC: Zone 2, ATEX, IECK
 - NEC: UL, CSA
 - Shell DEP, ExxonMobil, BP Amoco, Total S.A. and Chevron requirements
- Offers aftermarket support 24/7/365 via LAT's FX-TURBO Field Service Team and at **+1 855 FX-TURBO** (+1 855 398 8726)

L.A. Turbine
Headquarters & Service Center

28557 Industry Drive
Valencia, CA 91355 USA
T: +1 661 294 8290
sales@LATurbine.com

Worldwide Partners & Agents



L.A. Turbine
A Chart Industries Company
www.LATurbine.com