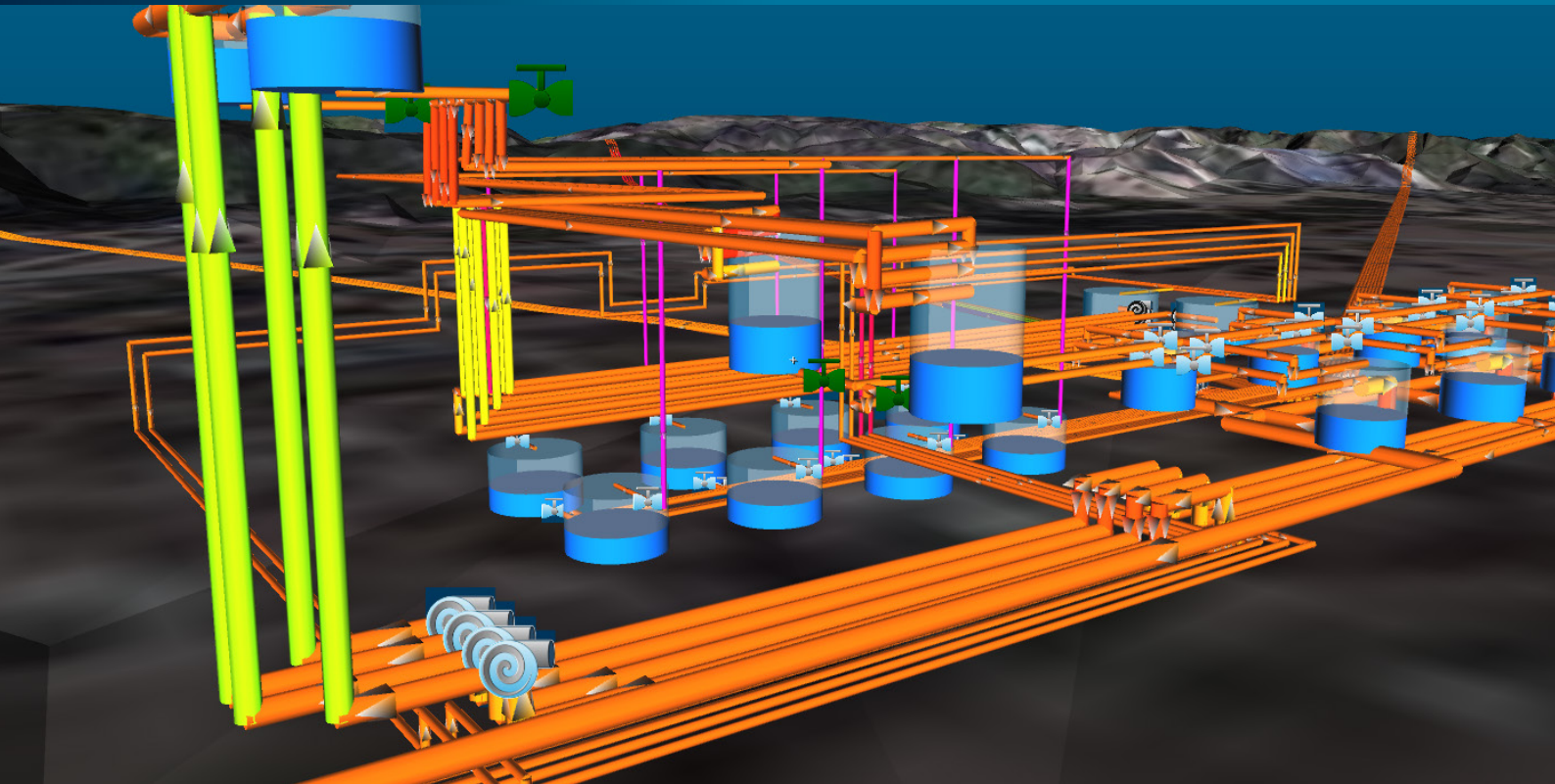


Pumpsim™ 4.0



New to Pumpsim

Better and faster graphics

Text is now more readable and overall smoother and faster.

Improved UI

Get the most out of the model in the very versatile and customisable Spreadsheet tools.

Advance Find and Select

Quickly navigate around your model.

Gas Mix simulation

Input gas mixture and see it spread though the model calculating the gas properties dynamically.

Our most visual flow simulation tool for pipe networks is now even better.

What is Pumpsim?

Pumpsim is a pipe system simulation software. By calculating flow and pressures through the 3D model it assists in selecting pumps, tanks and pipes sizes.

Pumpsim's three-dimensional interface makes it easy to model complex real world pipe systems in a highly interactive and intuitive 3D model.

Pumpsim is a new 3D simulation software which provides you with the tools to accurately model, simulate and optimise pump and pipe fluid networks.

Why use Pumpsim?

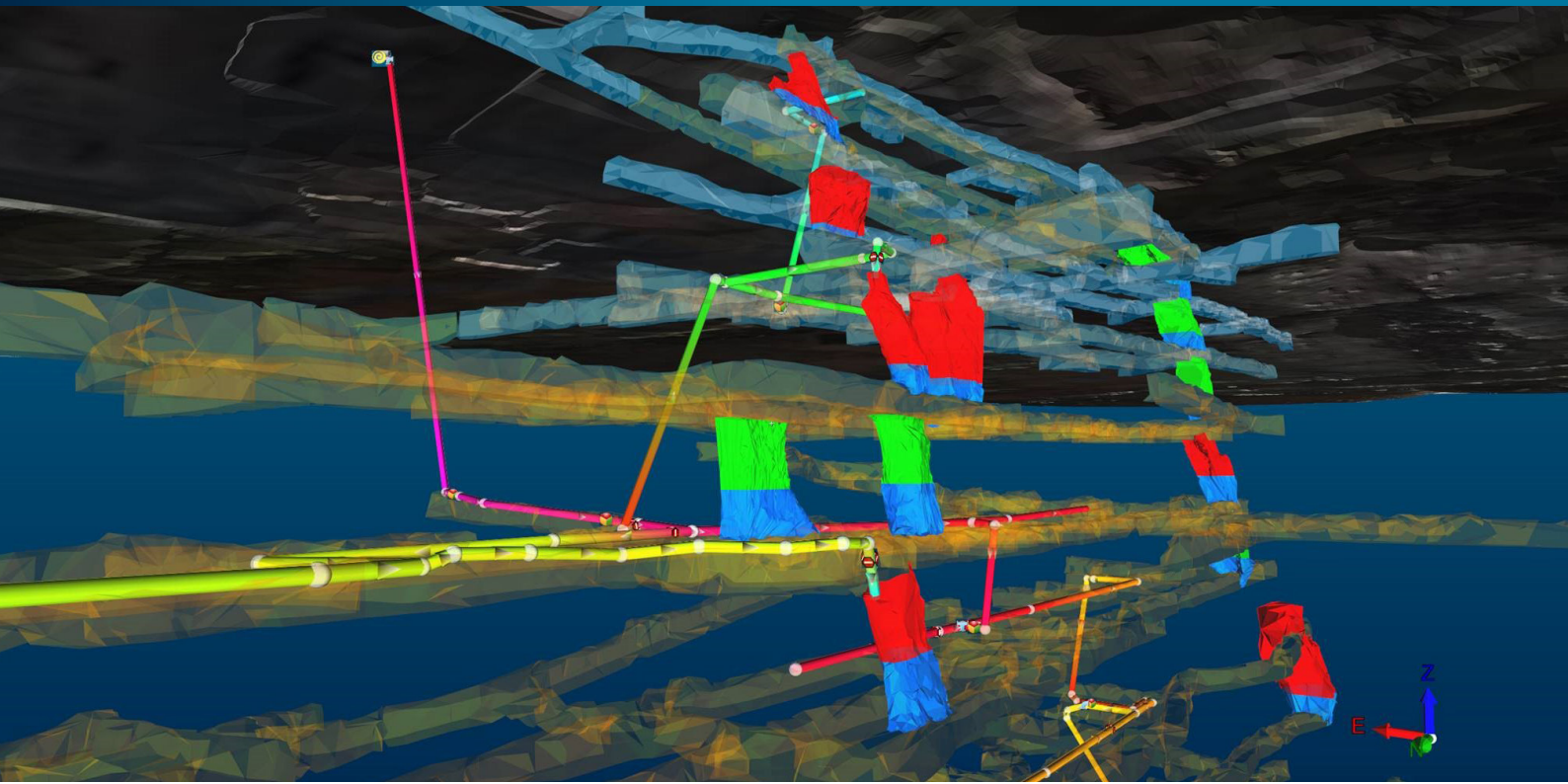
Poor and inefficient flow in the water and fluid network design in a mining, construction or other

industrial environment can often result in an unreliable supply system which may cause insufficient water supply or pressure, pipe breakage, poor pump performance and productions delays.

Pumpsim can solve these problems by ensuring that pumps and pipes are correctly sized and rated, and that the pipe and pump design is optimal for all required activities.

By ensuring your water and fluid systems are correctly designed, you can be confident of the safe, continuous supply and removal of water at correct pressures and flows, eliminating costly downtime.

Pumpsim allows for full 3D modelling with smooth rotation, zoom and pan, as well as real-time animation of liquid/slurry flow through the model.

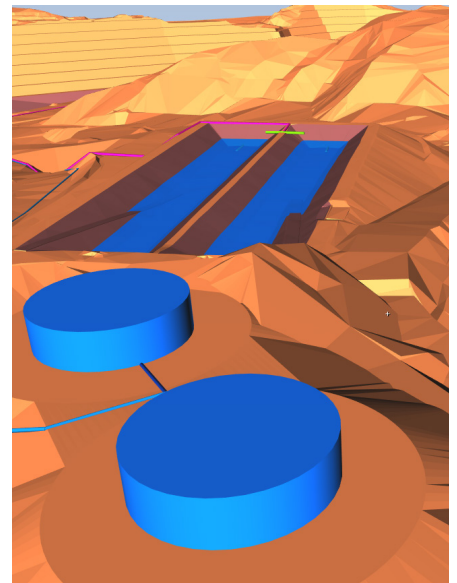


Pumpsim has been designed for use across a wide range of industries, including but not limited to:

- Mining
- Construction
- Agriculture
- Processing
- Civil

Pumpsim produces a fully-functional pump and pipe system with the following highly-customisable elements:

- Pipes and channels
- Pumps
- Tanks and dams
- Manual and automatic valves
- Junctions
- 'Demand' devices (sprays, machinery, drills etc)
- Drains
- Or other relevant parts of your pump and pipe system



Pumpsim can simulate the following fluid:

- Water, oil, and any Newtonian fluid
- Compressed air and gases (at constant temperature)
- Paste fill and other non-Newtonian fluids

Pumpsim 4.0 will allow you to take your designing to the next level and improve your simulation like never before.

To purchase or request a quote for Version 4, visit: [howden.cloud/pumpsim](https://www.howden.cloud/pumpsim)

For further information get in touch with our team today:

pumpsim@howden.com | www.pumpsim.com

