



Cooler By Design.™



Packaged Gas

TECHNICAL SPECIFICATION

EURO-CYL ZX M12 Standard



Cooler By Design.™

1. General

Type of tank:	Transportable liquid cylinder
Gas service:	LIN, LOX, LAR, CO ₂ , N ₂ O
Volume tolerance:	± 4%
MIN./MAX. ambient temperature:	-30 °C / +50 °C
Design regulation:	TPED (EN 1251, ADR)
Notified body:	TÜV NORD

2. Pressure vessel

Design code:	ADR, EN 1251
Material:	Stainless steel 1.4301
MIN./MAX. allowable temperature:	-196 °C / +50 °C
Piping material:	Stainless steel

3. Outer jacket

Design code:	EN 1251
Material:	Stainless steel 1.4301
MIN./MAX. allowable temperature:	-196 °C / +50 °C

4. Insulation

Type of insulation:	Super insulation
---------------------	------------------

5. Plumbing

Flow schematic:	See appendix 1
Components specification:	See appendix 1
Safety relief valves:	2 off, each safety relief valve designed for 100 % capacity
Piping material:	Stainless steel, copper
Pressure build-up vaporizer:	Aluminum flat fin
Product vaporizer:	Copper piping soldered on the outer jacket + aluminium star fins
DP Gauge:	Mechanical gauge

6. Connection

Bottom Fill/Liquid Withdrawal:	½" NPT Female
Vent/Trycock:	½" NPT Female
Gas Use:	½" NPT Female



Cooler By Design.™

Top Fill (option):

1/2" NPT Female (Top and Bottom fill connected - 1/2" NPT Female)

7. Documentation

Data Dossier:

Tank dossier in English electronically

Operation Manual:

Operating manual electronically either in English or on request in language of final destination (may be subject of additional charges)

Paper Dossier & Operation Manual: Optional

8. Miscellaneous

Final surface:

Stainless steel buffed surface

Pallet Frame:

Galvanized carbon steel

9. Options

See appendix 1

Model		600/24 ZX	600/37 ZX	800/37 ZX	1000/24 ZX	1000/37 ZX
		M12	M12	M12	M12	M12
Capacity						
Liquid (gross)*	(liters)	601		801		997
Liquid (net)	(liters)	571		761		947
Gas (N ₂)**	(Nm ³)	369		492		612
Gas (O ₂)**	(Nm ³)	456		607		756
Gas (Ar)**	(Nm ³)	446		594		740
Gas (CO ₂)**	(Nm ³)	293		391		486
Gas (N ₂ O)**	(Nm ³)	304		405		504
Performance & general info						
NER *** (N ₂)	(% day)	1,6			1,5	
Gas Flow (N ₂ , O ₂ , Ar)	(Nm ³ /hr)	50	70	80	60	80
Gas Flow (CO ₂ & N ₂ O)	(Nm ³ /hr)	21			24	
Max. Relief Valve Setting	(bar)	24	37	37	24	37
Code		TPED (EN1251)				
Dimensions & weight						
Tank Diameter	(mm)	900		1050		1100
Base Dimens (LxW)	(mm)	1080 x 1300		1220 x 1450		1270 x 1500
Height	(mm)	2110		2150		2200
Tare Weight (approx.)	(kg)	715	790	940	930	1030
Max. Full Weight Incl. Product (approx.)	(kg)					
LIN**		1173	1248	1551	1691	1791
LOX**		1367	1442	1809	2011	2111
LAR**		1511	1586	2000	2250	2350
LCO ₂ **		1346	1421	1782	1988	1978
LN ₂ O**		1327	1402	1756	1945	2045

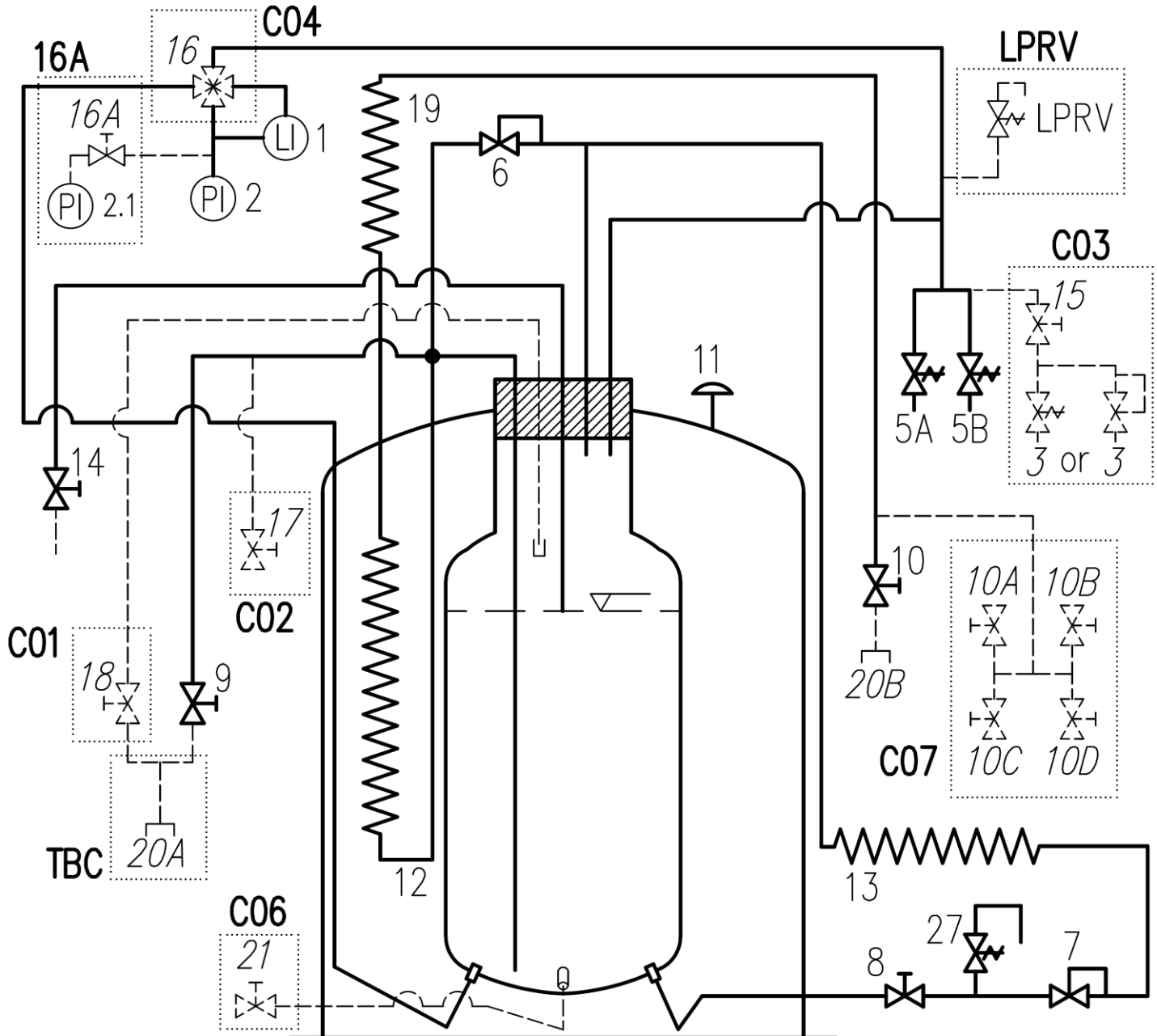
* Volume tolerance is ±4% (EC 1000 tolerance +0, -4%)

** At 0 barg pressure for N₂, O₂, Ar and 10 bar for CO₂, N₂O

*** NER: Nominal Evaporation Rate

Note: All models and specifications are conditional and subject to change without prior notice.

Appendix 1 – Flow Diagram (K4029448)



DOTTED LINES: OPTIONS