



# Divider Blocks for Methanol Application

Methanol injection pumps are often used in wellhead and pipeline applications where seasonal drops in ambient air temperature result in the freezing of liquids falling out of the gas stream. By injecting methanol at various points, the potential for freezing is reduced or eliminated. Historically, a large reservoir of methanol, a containment pan, and a methanol pump were placed at each injection site. With the addition of a divider block, a single methanol pump package can feed up to six individual injection points, significantly lowering operating costs.

Divider blocks (often referred to as splitter blocks or distribution blocks) are simply proportioning valves that divide a single input into multiple outputs. Divider blocks can be easily configured for 2, 3, 4, 5 or 6 outlets (often referred to as 2 way, 3 way...)

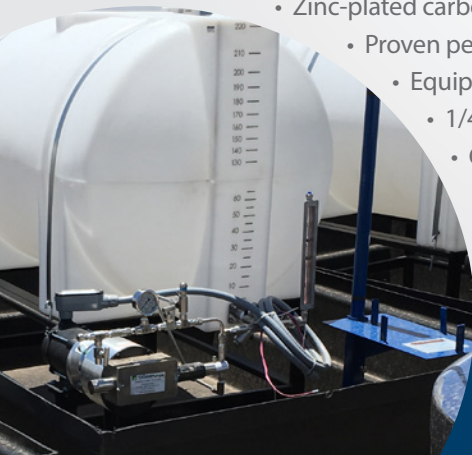
CPI, part of the Howden group, offers the DropsA SMX product line as an affordable performance product featuring:

- Simplified ordering process to save time and reduce errors
- Base assemblies are bolted together with threaded insert and attachment screw
- Each divider block assembly is easily configured to the customer's specific lubrication needs
  - Zinc-plated carbon steel
  - Proven performance for applications up to 4,000 PSI (276 bar)
  - Equipped with Buna O-rings for compatibility with methanol
    - 1/4" NPT inlet, and 1/8" NPT outlets
    - CE and ATEX certified CE EX II 2 Gc IIC T6



CE Ex II 2 Gc IIC T6

 **CPI**  
by Howden



## METHANOL DIVIDER BLOCK ASSEMBLY

PART NO.	OLD PART NO.	DESCRIPTION	NO. OF OUTLETS
65003000SMXMTH2	6500300DV030071	Divider Block (50S-25SC-25S)	2 WAY
65003000SMXMTH3	6500300DV030072	Divider Block (50S-50S-50S)	3 WAY
65003000SMXMTH4	6500300DV030073	Divider Block (50T-25S-25S)	4 WAY
65003000SMXMTH5	6500300DV030074	Divider Block (50T-50T-25S)	5 WAY
65003000SMXMTH6	6500300DV030075	Divider Block (50T-50T-50T)	6 WAY

## BASE PLATE ASSEMBLIES

The SMX base plate assembly is pre-assembled and available to accommodate three elements. The base plate assembly is fully assembled to simplify ordering and customer inventory. Each assembly comes with a 1/4" NPT to 1/4" OD tube inlet fitting – Part 6500500CMC44NSS

PART NO.	PART TYPE	DESCRIPTION
65003SMXMTHBP3D	Base Plate Assembly	SMX 3 Section Base Plate



## METERING ELEMENTS

Twin element is ported to deliver oil to both left and right base outlet ports. Single element is ported to deliver oil to one base outlet port.

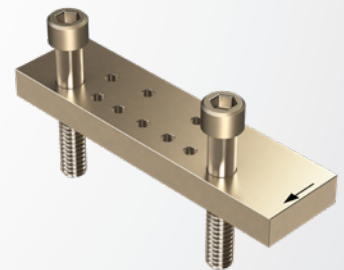
PART NO.	PART TYPE	DESCRIPTION	OIL VOLUME per working outlet	
			in <sup>3</sup>	cc
650030SMXMTH25S	Elements	SMX 25S Element	0.030	0.50
650030SMXMTH50S	Elements	SMX 50S Element	0.060	1.00
650030SMXMTH50T	Elements	SMX 50T Element	0.030	0.50



## CROSSPORT BAR

A crossport bar transfers the oil of the element it is mounted underneath, to the next element in series.

PART NO.	PART TYPE	DESCRIPTION
650030SMXMTHCPR	Crossport Bars	SMX Crossport Bar Right



## REPLACEMENT PARTS KITS

PART NO.	PART TYPE	DESCRIPTION
65003000SMXBORK	Replacement Part Kits	O-Ring Kit, Black Buna, Qty 150

NOTE: For additional divider block components and product dimensions, please see SMX Divider Blocks brochure.



CPI, part of the Howden group, provides industry leading lubrication system products and services, partnering with our customers to develop individual solutions to their unique lubrication needs. From individual components to complete, turnkey systems, we can provide the resources and expertise to ensure your compressor operates at peak performance and longevity.