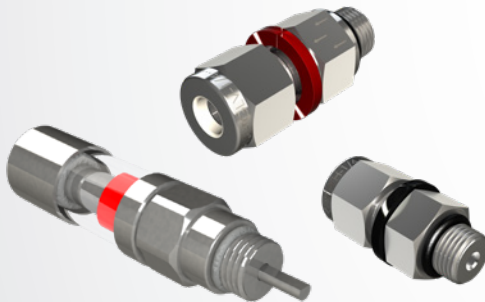


## DIVIDER BLOCK ACCESSORIES

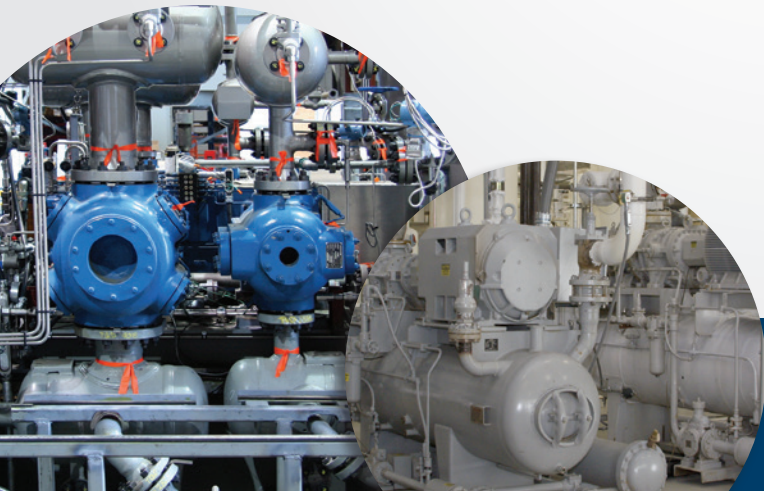
CPI, part of the Howden group, offers all the accessories necessary to get the most out of our divider blocks and to keep your compressor and lubrication system running at peak efficiency.



Our NEOMAG® visual cycle indicator tracks the divider block piston movement allowing you to monitor and control oil consumption, set proper lube rates and easily spot problems in the divider block system.

Spring Loaded Pressure Indicators (reset pin indicators) help you immediately locate high pressure points in the divider block or the location of a blocked tubing line in the divider block lubrication systems.

CPI also offers base plate check valves, base plate fittings and mounting brackets for your divider blocks.



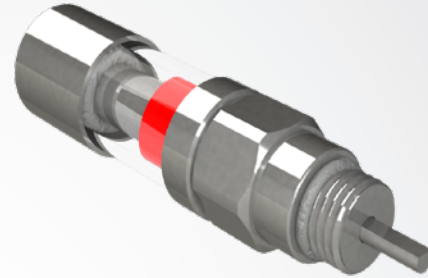
## NEOMAG® VISUAL CYCLE INDICATOR

The Neomag® cycle indicator follows the divider block piston movement so the operator can monitor and control oil consumption, set lube rates, and easily spot problems in the divider block system. Documenting the cycle times and determining the system cycle time pattern will always be the most accurate method of setting the correct lubrication flow rates.

See our Neomag® brochure for complete user instructions.

### FEATURES

- Works with CPI, DropsA, Graco, Sloan, Lincoln or equivalent brand divider blocks
- Available in three mounting configurations:
  - Trabon O-Ring Design
  - DropsA Metal Seal Design
  - Lincoln O-Ring Design
- Installs on any divider block element size\* without changing the rated output of the element
  - \* The exception is DropsA SMX size 04 elements, do not install on this element
- Uses stainless steel components with a polycarbonate viewing window housing reflective magnets to provide a visual indication of divider block operation
- Design is leak free and the viewing window will remain clear providing easy indicator visibility
- Pressure rating of 8000 psi (552 Bar)
- All hydraulic sealing O-Rings are AS-568-904 size, 90 durometer, fluorocarbon material (FKM)



Neomag® Visual Cycle Indicator

| PART NO.        | DIVIDER BLOCK TYPE     |
|-----------------|------------------------|
| 650050000000NMD | DropsA                 |
| 650050000000NML | Lincoln                |
| 650050000000NMT | CPI HP+/XD+, Graco, SB |

*DropsA® is a registered trademark of DropsA USA, Inc.*

Patent Number: #7,461,670 B1 - US D570,236 S, US D591,627 & US D613,631 S

## MOUNTING BRACKETS

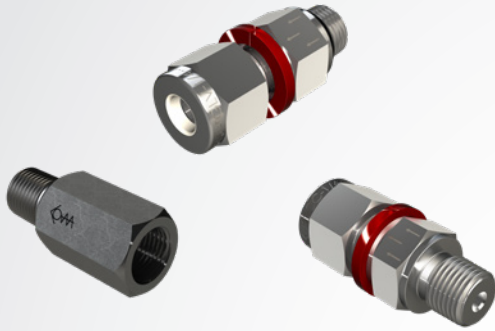
Mounting Brackets

| PART NO.        | DESCRIPTION                   |
|-----------------|-------------------------------|
| 6500300000DBMBL | L Configuration               |
| 6500300000DBMBZ | Z Configuration               |
| 6500300DBMB9008 | 90 Degree Configuration (8")  |
| 6500300DBMB9010 | 90 Degree Configuration (10") |
| 6500300DBMB9012 | 90 Degree Configuration (12") |



## BASE PLATE CHECK VALVES

CPI's integral check valve and tube fitting featuring the CPI 1/8" ORB geometry is recommended for HP+ applications. This check valve is stainless steel, features an Viton® FKM\* poppet sealing element and is only available from CPI. Other check valves are available if the recommended check valve does not meet the customer's application.



SMX Base Plate Outlet Check Valves

| PART NO.        | DESCRIPTION   |
|-----------------|---|
| 65002000421PROR | Tube Fitting, 1/8" ORB x 1/4" Tube, Poppet, Red Ring            |
| 6500200421PRNPT | Tube Fitting, 1/8" NPT x 1/4" Tube, Poppet, Red Ring, 8,000 psi |
| 650020000094731 | 1/8" NPT Male x 1/8" NPT Female, Poppet, Steel, 7,250 psi       |
| 650020000094732 | 1/8" NPT Male x 1/8" NPT Female, Poppet, Stainless, 7,250 psi   |
| 650020000094735 | 1/8" NPT Male x 1/8" NPT Female, Ball, Steel, 5,000 psi         |
| 650020000094736 | 1/8" NPT Male x 1/8" NPT Female, Ball, Stainless, 5,000 psi     |

\*Viton® is a registered trademark of the Chemours™ Company.

## BASE PLATE FITTINGS

CPI offers other 1/8" ORB fittings to support customer's specific needs. Industry standard 1/8" NPT fittings can be used with sealant if a 1/8" ORB fitting solution is not available.

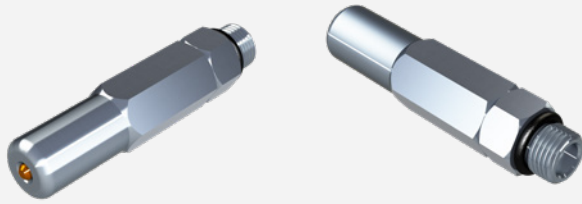


Base Plate Fittings

| PART NO.        | DESCRIPTION  |
|-----------------|--|
| 65005000042MCOB | Inlet Tube Fitting, 1/8" ORB x 1/4" Tube, Black Ring     |
| 650050004NPT2OR | Port Adapter, 1/8" ORB x 1/4" NPT Female                 |
| 65005000042TAOR | Tube Adapter Fitting, 1/8" ORB x 1/4" Tube Stub          |
| 6500500CMC44NSS | SMX Inlet Tube Fitting 1/4" NPT Male x 1/4" Tube         |
| 6500500CAM44NSS | SMX Tube Adapter Fitting, 1/4" NPT Male x 1/4" Tube Stub |

## RESET PRESSURE INDICATORS

Spring loaded reset pressure indicators with memory are pressure sensing devices that enable the operator to easily locate the point of excessive pressure or lube line blockage in divider valve type lubrication systems.



|                 |                                   |
|-----------------|-----------------------------------|
| <b>LENGTH</b>   | 2.35"                             |
| <b>HEX SIZE</b> | 1/2"                              |
| <b>MATERIAL</b> | 300 Stainless Steel Body & Spring |
| <b>SEALS</b>    | Viton® O-rings                    |
| <b>PIN</b>      | Aluminum, Anodized, Color Coded   |

\*Suitable for use with both mineral based and synthetic oils

CPI HP+ / XD+, Graco, SB, Lincoln (CPI 1/8" ORB)

| PART NO.        | PRESSURE RATING | COLOR  |
|-----------------|-----------------|--------|
| 6500500TRPI1500 | 1,500 psi       | Red    |
| 6500500TRPI2000 | 2,000 psi       | Orange |
| 6500500TRPI2500 | 2,500 psi       | Purple |
| 6500500TRPI3000 | 3,000 psi       | Green  |
| 6500500TRPI3500 | 3,500 psi       | Black  |
| 6500500TRPI4000 | 4,000 psi       | Gold   |
| 6500500TRPI5000 | 5,000 psi       | Grey   |

DropsA® Divider Blocks (1/8 BSPT)

| PART NO.        | PRESSURE RATING | COLOR  |
|-----------------|-----------------|--------|
| 650050225601500 | 1,500 psi       | Red    |
| 650050225602000 | 2,000 psi       | Orange |
| 650050225602500 | 2,500 psi       | Purple |
| 650050225603000 | 3,000 psi       | Green  |
| 650050225603500 | 3,500 psi       | Black  |
| 650050225604000 | 4,000 psi       | Gold   |
| 650050225605000 | 5,000 psi       | Grey   |

DropsA® is a registered trademark of DropsA USA, Inc.



CPI, part of the Howden group, provides industry leading lubrication system products and services, partnering with our customers to develop individual solutions to their unique lubrication needs. From individual components to complete, turnkey systems, we can provide the resources and expertise to ensure your compressor operates at peak performance and longevity.