

DELIVERY UNITS MDX

Delivery unit for air gases

Technical Features

- Designed for transportation of liquid nitrogen, oxygen and argon.
- Volume capacity of 600, 800 and 996 liters.
- All stainless steel construction and inner support system for durability and long life.
- Super-insulation provides long holding time and low nominal evaporation rate.
- Design and production in accordance with the European codes, standards and regulation for transportation of hazardous goods.
- Long life and low maintenance cost.

Options and Accessories

- Additional fill / liquid withdrawal valves.
- Connections according to customer's requirements.
- Additional vent valve.
- Low pressure relief line.
- Gauge isolation valves.
- Stainless steel bottom frame for forklift.
- Ball valves instead of globe valves.



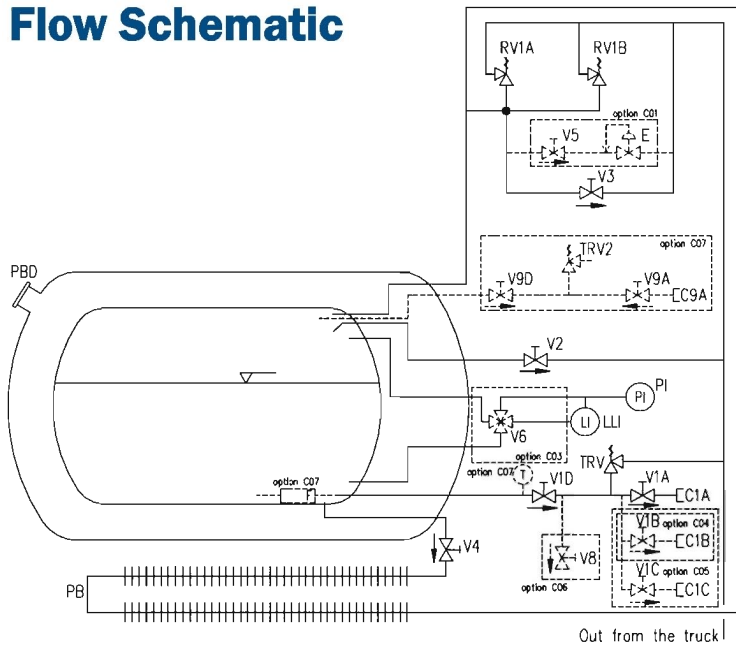
The perfect solution for home care application

DELIVERY UNITS MDX

Delivery unit for air gases

Specifications

Flow Schematic



Option no.	No.	Function
C01	V5	Road relief circuit valve
	E	Road relief circuit regulator
C02	V3	Vent valve
C04	C1B	Additional fill/discharge connection
	V1B	Additional fill/discharge valve
C05	C1b, C1c	Additional fill/discharge connection
	V1b, V1c	Additional fill/discharge valve
C06	V8	Fill line drain valve
C07 - Flow Meter	C9A	Fill/discharge connection
	DP1	Transmitter
	F	Flow meter
	TRV2	Fill line thermal relief valve
	V9A	Fill/discharge valve
	V9D	Additional fill/discharge valve
C08	-	Bottom frame for forklift

Technical Parameters

Type	Gross Volume (l)	MAWP* (bar)	A-Unit Length (mm)	B-Unit Height (mm)	C-Unit Width (mm)	Tare Weight** (kg)	Payload (kg)		
							LIN	LOX	LAR
DU 600/8	600	8	1653	1093	1068	390	461	651	794
DU 800 L/8	800	8	1962	1093	1068	425	614	868	1059
DU 1000 L/8	996	8	2235	1092	1068	525	765	1080	1319
DU 1000 L/15	996	15	2235	1192	1068	648	765	1080	1319

* MAWP = Maximum allowable working pressure

** Approximate weight of basic model without options

