

### TECHNICAL DATA SHEET



#### Product Features

##### Hermetically Sealed – UL Listed

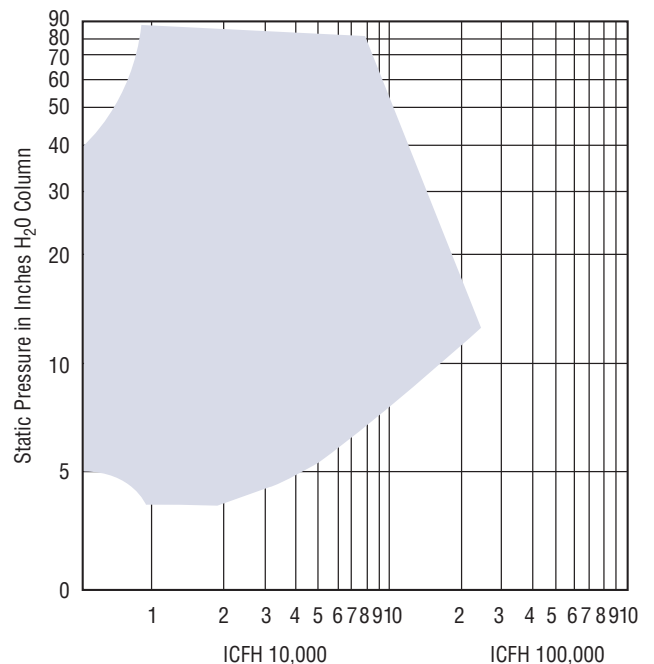
Multistage centrifugal design

Volume to 240,000 ICFH

$\Delta P$  to 83" WC

Explosion-proof motor – UL Listed

#### Performance Range



The Spencer Turbine Company introduced the first hermetically sealed multistage natural gas boosters in 1975. The company continues to lead the industry with a range of designs using Spencer's standard overhung blowers and multiple, spark-resistant aluminum alloy impellers mounted directly on heavy-duty extended motor shafts.

Spencer's High Capacity Series UL Listed Natural Gas Booster is a multistage design. Installations benefit from the highest performance ratings available. The High Capacity Series can boost pressure levels by as much as 83 inches WC, with volumes to 240,000 ICFH. Spencer's simple direct drive and generous internal clearances provide for long-term reliability and quiet operation — well within OSHA limits. The unique leaktight hermetic design also provides a continuous flow of natural gas around the explosion-proof motor, cooling the motor and extending its life.

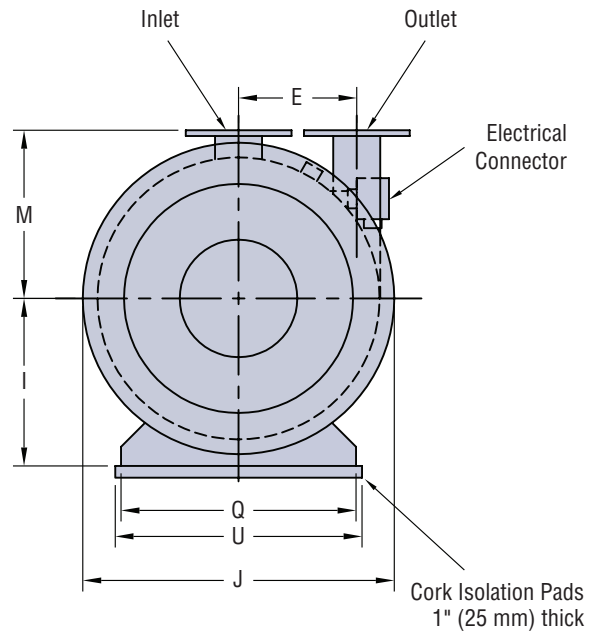
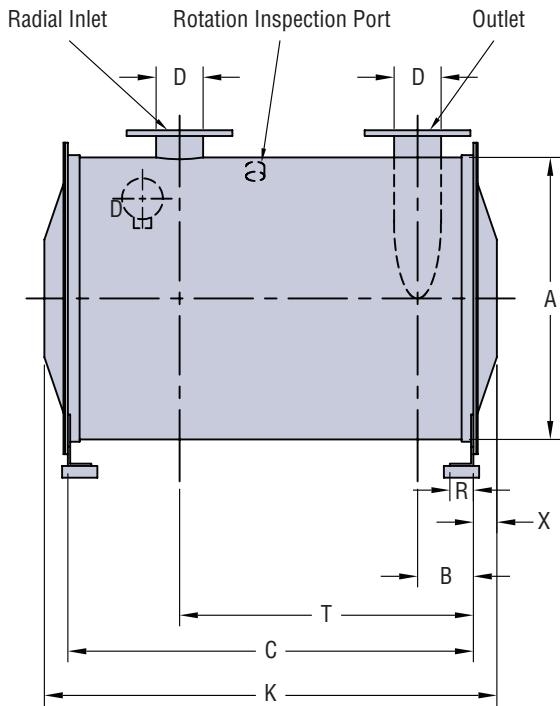
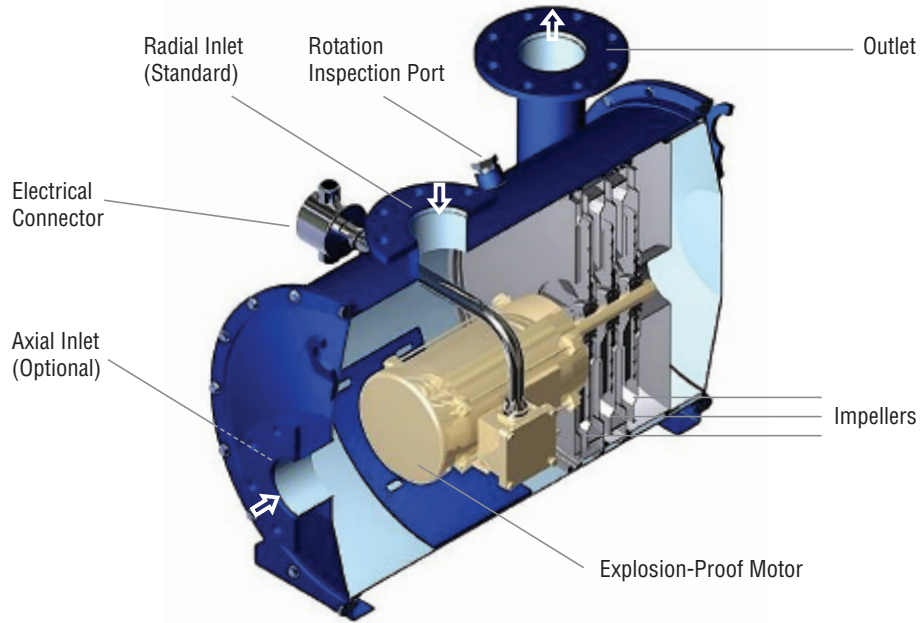
In addition, Spencer offers the GasCube™ series, an easy-to-install natural gas booster skid package. It is pre-engineered, prepiped and has a compact footprint. The GasCube package is also available in organized modules for on-site assembly. Spencer's complete line of hermetic, single and multistage, low and high-pressure gas boosters — including the GasCube skid package — undergo standard commercial tests at the factory for leaks as well as for power input, volume and pressure.

For information on Spencer's Low Capacity Series UL Listed Natural Gas Boosters, refer to Bulletin TDS-513 and for information on the GasCube Series, refer to Bulletin No. 515.

► **Notes:** Ratings based on inlet gas at standard pressure of 14.7 PSIA, temperature 70°F, 0.6 specific gravity natural gas and 1.0 specific gravity air for UL Listing. Allowable maximum inlet to UL standards is 15.2 PSIA or 13" WC and nominal 70°F.

# UL Listed Natural Gas Boosters

## High Capacity Series

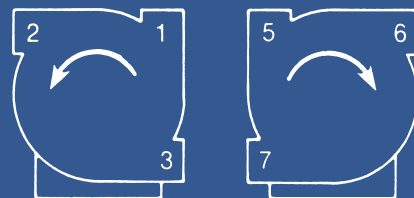


**Notes:**

1. No special equipment foundation is necessary, but a level concrete floor or block is recommended. Simply rest machine on cork pads furnished; do not use anchor bolts. Flexible piping connections are recommended.
2. Inlet and outlet positions must be specified when the gas booster is ordered.
3. All dimensions are for reference only unless certified.
4. All units have thermal overload protection in motor and must be connected according to NEC and local codes.
5. Flanges are supplied with 125# drilling standard.

**Outlet Position:**

Available outlet position as viewed from the outlet end of the machine. Specify position on order.





Catalog Number	HP	Performance			
		GAS @ 0.6 SP. GR.		AIR @ 1.0 SP. GR.	
		Volume ICFH	Pressure IN.WC	Volume ICFH	Pressure IN.WC
GL-0125-1/4-R	1	9000	3.5	9000	6.1
GL-0125-1/3-R	1	12000	3.5	12000	5.7
GL-0125-1/2-R	1	18000	3.5	18000	5.7
GL-025-1/2-R**	1	14400	5.9	14400	9.8
GL-025-1/3-R	1	10500	6.9	10500	11.4
GL-025-1/2-R**	1	14400	6.9	14400	11.4
GL-025-3/4-R	1	18000	6.9	12000	14.7
GL-0251-R	1 1/2	24000	6.9	18000	12.1
GL-0251-1/2-R	2	39000	6.9	30000	12.1
GL-0252-R	3	54000	6.9	42000	13.8
GL-0253-R	5	84000	6.9	54000	17.3
GL-040-1/2-R	1	9600	10.4	9600	17.3
GL-0401-R	1 1/2	18000	10.4	12000	17.3
GL-0401-1/2-R	2	27000	10.4	13500	19
GL-0402-R	3	39000	10.4	15000	19
GL-0403-R	5	55200	10.4	42000	20.8
GL-0405-R	5	78000	10.4	72000	17.3
GL-0407-R	7 1/2	126000	10.4	96000	17.3
GL-0410-R	10	168000	10.4	132000	17.3
GL-050-3/4-R	1	9000	13.8	*	17.3
GL-0501-1/2-R	2	18000	13.8	13200	23
GL-0502-R	3	25800	13.8	21000	23
GL-0503-R	5	42000	13.8	42000	24.2
GL-0505-R	5	57000	13.8	42000	24.2
GL-0507-R	7 1/2	88500	13.8	72000	24.2
GL-0510-R	10	106500	13.8	84000	25.1
GL-0515-R	15	180000	13.8	90000	23
GL-0520-R	20	246000	13.8	150000	23
GL-075-3/4-R	1	4500	20.8	*	—
GL-0751-1/2-R	2	9600	20.8	9600	34.6
GL-0752-R	3	19200	20.8	15600	36.3
GL-0753-R	5	25500	20.8	28500	34.6
GL-0755-R	5	36000	20.8	*	—
GL-0757-R	7 1/2	63000	20.8	45000	37.2
GL-07510-R	10	81000	20.8	66000	34.6
GL-07515-R	15	120000	20.8	108000	34.6
GL-07520-R	20	162000	20.8	150000	34.6

Catalog Number	HP	Performance			
		GAS @ 0.6 SP. GR.		AIR @ 1.0 SP. GR.	
		Volume ICFH	Pressure IN.WC	Volume ICFH	Pressure IN.WC
GL-1001-R	1 1/2	6600	27.7	3900	46.7
GL-1001-1/2-R	2	8400	27.7	*	—
GL-1002-R	3	18000	27.7	9900	51.9
GL-1003-R	5	21600	27.7	21600	46
GL-1007-R	7 1/2	42000	27.7	*	—
GL-1010-R	10	60000	27.7	54000	46
GL-1015-R	15	96000	27.7	84000	46
GL-1020-R	20	132000	27.7	120000	46
GL-1202-R	3	9600	34.6	7200	57.1
GL-1203-R	5	18000	34.6	18000	57.1
GL-1205-R	5	22500	34.6	*	—
GL-1207-R	7 1/2	36000	34.6	30000	48.4
GL-1210-R	10	54000	34.6	30000	60.6
GL-1215-R	15	84000	34.6	*	—
GL-1220-R	20	108000	34.6	68400	61.4
GL-1225-R	25	120000	34.6	*	—
GL-1230-R	30	162000	34.6	90000	65.7
GL-1502-R	3	9600	41.5	*	—
GL-1505-R	5	19500	41.5	13200	70.9
GL-1507-R	7 1/2	30000	41.5	*	—
GL-1510-R	10	42000	41.5	36000	69.2
GL-1515-R	15	60000	41.5	*	—
GL-1520-R	20	90000	41.5	66000	69.2
GL-1525-R	25	111000	41.5	96000	69.2
GL-1530-R	30	138000	41.5	96000	69.2
GL-2003-R	5	13800	55.4	8400	96.9
GL-2007-R	7 1/2	24000	55.4	12000	96.9
GL-2010-R	10	33000	55.4	16500	96.9
GL-2015-R	15	48000	55.4	30000	102.1
GL-2020-R	20	66000	55.4	48000	102.1
GL-2030-R	30	102000	55.4	60000	99.5
GL-2505-R	5	10500	69.2	*	—
GL-2507-R	7 1/2	16500	69.2	13500	115.4
GL-2510-R	10	22500	69.2	18000	115.4
GL-2515-R	15	39000	69.2	30000	115.4
GL-2520-R	20	54000	69.2	36000	127.2
GL-2525-R	25	69000	69.2	42000	122.8
GL-2530-R	30	78000	69.2	66000	115.4
GL-3007-R	7 1/2	12000	83.0	9000	138.4
GL-3010-R	10	18000	83.0	10500	138.4
GL-3015-R	15	28500	83.0	*	145.3
GL-3020-R	20	37500	83.0	*	138.4
GL-3025-R	25	57000	83.0	*	155.7
GL-3030-R	30	72000	83.0	*	138.4

\*Not recommended for handling air — overloads the motor.

\*\*Please specify the pressure required at time of order.

► **Notes:** Ratings based on inlet gas at standard pressure of 14.7 PSIA, temperature 70°F, 0.6 specific gravity natural gas and 1.0 specific gravity air for UL Listing. Allowable maximum inlet to UL standards is 15.2 PSIA or 13" WC and nominal 70°F.

Gas Boosters include 208, 230/460V, 3Ph, 60Hz, 3500 RPM, class 1, group D, UL Listed, explosion-proof motor with thermal overload protection and junction box.

Spencer may make improvements and dimensional changes to equipment designs based on market trends and requirements.

**For product selection assistance, please email [marketing@spencer-air.com](mailto:marketing@spencer-air.com) or visit our website at [www.spencerturbine.com](http://www.spencerturbine.com) to locate the Spencer representative in your area.**

For Customer Approval     Certified Correct

Date: \_\_\_\_\_

Signed: \_\_\_\_\_

Customer Name: \_\_\_\_\_

Customer Order No.: \_\_\_\_\_

Project Name: \_\_\_\_\_

Sales Order No.: \_\_\_\_\_



The **Spencer** Turbine Company, 600 Day Hill Road, Windsor, CT 06095-4706

TEL 800-232-4321 ♦ 860-688-8361 ♦ FAX 860-688-0098 ♦ [www.spencerturbine.com](http://www.spencerturbine.com)

