



Spencer Industravac® Series DJC with Jet-Clean® Separator.

### Performance Data

Volume (scfm)	Vacuum (in. Hg)	Motor hp	Catalog Number	Shipping Weight (lb.)
1000	5.0	25	SD-325B-JC	1950
740	7.6	30	SD-430B-JC	2000
1080	6.8	40	SD-440B-JC	2030
820	8.9	40	SD-540B-JC	2050

Performance based on 70 °F inlet temperature at sea level.

### Materials of Construction

- Casing, separator, base, dirt can: ASTM A1011 hot-rolled steel
- Impellers: 5052-H34 aluminum
- Shaft: AISI-1045 hot-rolled bar steel
- Finish: epoxy primer with Spencer blue urethane topcoat

### Product Features

#### Vacuum Producer

- Multistage centrifugal
- Standard overhung direct drive
- 8" flange upblast exhaust
- Average sound pressure level: 83 dBA at 3 ft.
- Factory performance tested

#### Motor

- 25, 30 or 40 hp, 3500 rpm
- 208-230/460 or 575 volt, 3 phase, 60 Hz
- Open drip-proof
- Bearing life: 100,000 hours (L-10)

#### Separator

- Jet-Clean pulse design: 36" diameter
- Multiple cartridges: Quantity 13
- Filter area: 475 sq. ft.
- Filter material: Spun Bond Polyester
- 1" FNPT compressed air connection with pressure gauge
- 110 volt timer board and NEMA 4 sequencer
- Differential pressure gauge
- 5" x 10" inspection opening with bolt-on cover and gasket
- Large, hinged access door
- Removable dirt can, cam actuated, capacity: 7½ cu. ft.
- Average filtration efficiency: 99.9% at 3 microns
- Axial inlets with target plate:
  - Primary inlet – 6" tubing with sleeve
  - Secondary inlet – inlet valve (Part No. VLV90083) for 1½" diameter hose

#### Base

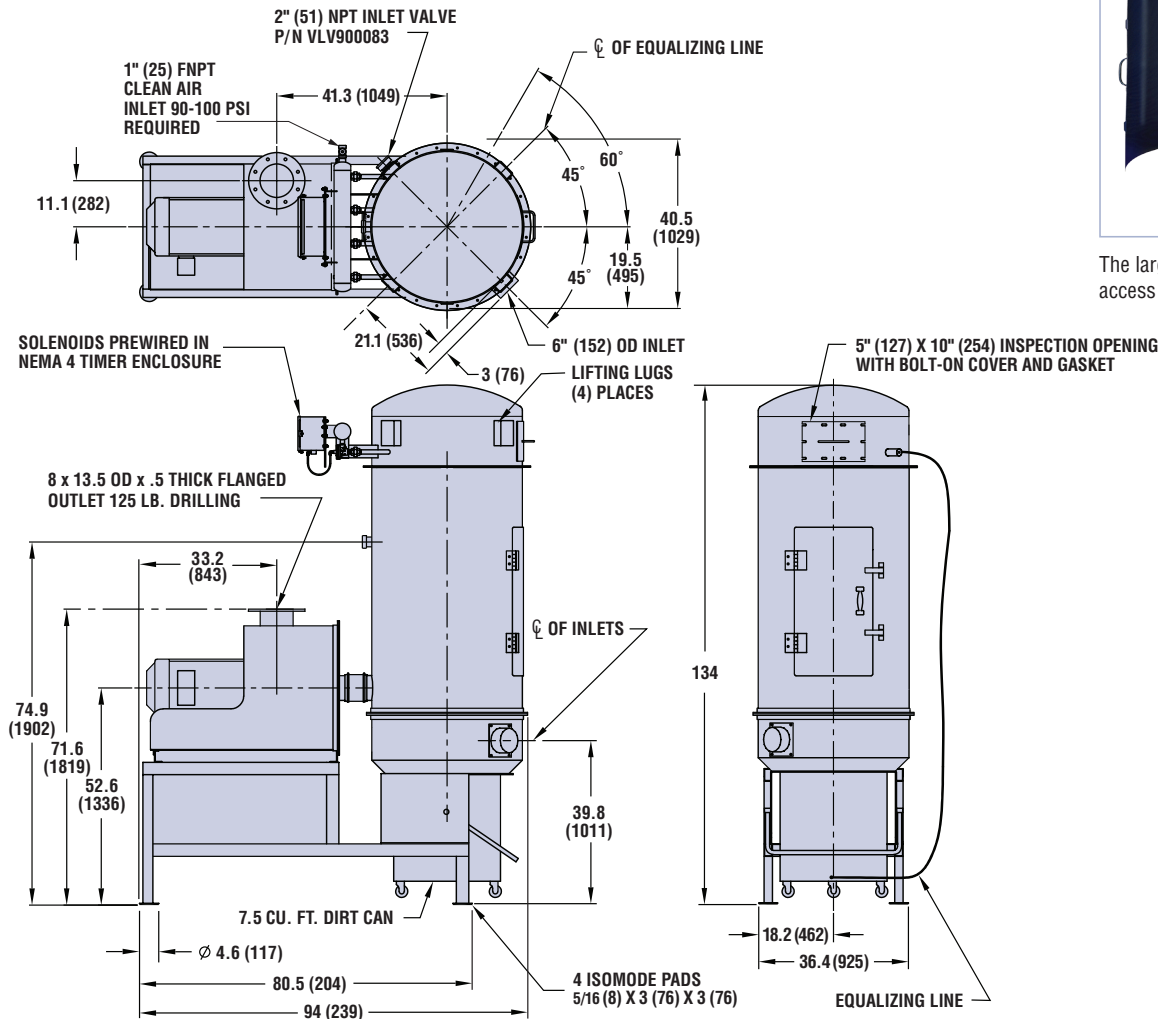
- Common frame with mounting pads

#### Available Options

- TEFC and explosion-proof motors
- Special motor voltages
- NEMA 4, 7 or 9 controls
- Other filter materials
- Dirt can liners (with equalizing line)
- Discharge silencer
- Discharge throttling valve
- Inlet valve (Part No. VLV90100) for 2" diameter hose
- Explosion relief vent
- Rear primary inlet position
- Grounding lug and grounded cartridges
- NEMA 7 or 9 sequencer, timer and solenoids

Ships in two pieces. Bolt separator to frame at jobsite.

**Dimensions:** Shown in inches / (mm)



The large door provides easy access to filter cartridges.

Performance Data	Motor Data	Separator Filter Data
Volume (scfm) _____	hp _____ rpm _____	Area: _____ 475 sq. ft.
Vacuum (in. Hg) _____	Voltage _____	Cartridge Quantity: _____ 13
Discharge Pressure (psia) _____	Phase _____ Hz _____	Part No.: _____
Inlet Temperature (°F) _____	Enclosure _____	Filter Material: _____ Spun Bond Polyester

► Spencer may make improvements and dimensional changes to equipment designs based on market trends and requirements.

**For product selection assistance, please email [marketing@spencer-air.com](mailto:marketing@spencer-air.com) or visit our website at [www.spencerturbine.com](http://www.spencerturbine.com) to locate the Spencer representative in your area.**

Industravac® and Jet-Clean® are registered trademarks of The Spencer Turbine Company.



The  **Spencer Turbine Company, 600 Day Hill Road, Windsor, CT 06095 USA**

*Blowers & Vacuum Systems with an Engineering Edge*

TEL 800.232.4321 ♦ 860.688.8361 ♦ FAX 860.688.0098 ♦ [www.spencerturbine.com](http://www.spencerturbine.com)

