

# DROP & GO TRAILER (DAGT)

MOBILE ONSITE STORAGE SYSTEM



Chart's Drop & Go Trailer ("DAGT") Series offers a flexible solution for a wide range of temporary gas applications and small liquid supply of oxygen, nitrogen, or argon. The DAGT Series is specifically designed to be a stand-alone unit complete with onboard ambient vaporization and gas use connections for immediate use in a wide range of gas applications such as construction sites, welding jobs, or as a backup supply system. **The DAGT units are ideal for customer startups, bulk supply trials, or as backup for maintenance and servicing permanent cryogenic equipment.**

The inner vessels are rated to a Maximum Allowable Working Pressure (MAWP) of 250 psig (17.2 barg) for sufficient pressure rise without product loss during extended periods of non-use. All models feature a robust, internal tank support system design and built with Chart's exclusive super insulation system for **low product loss and long service life.**

## Applications

- Temporary System Installs
- Short Term Gas Delivery and Storage Solution
- Back-Up Supply for System Maintenance or Repairs
- High Flow and Use for Laser and Welding
- Pipeline Purging

## Product Features

- 6000 or 9000-gallon Horizontal Bulk Tank with 250 psi MAWP
- Liquid or Gas Use: LIN/LAR/LOX
- Dual Safety System with Diverter Valve
- Chart SP: Ambient Vaporizer
- Pressure Control Manifold



# DROP & GO TRAILER (DAGT)

## MOBILE ONSITE STORAGE SYSTEM

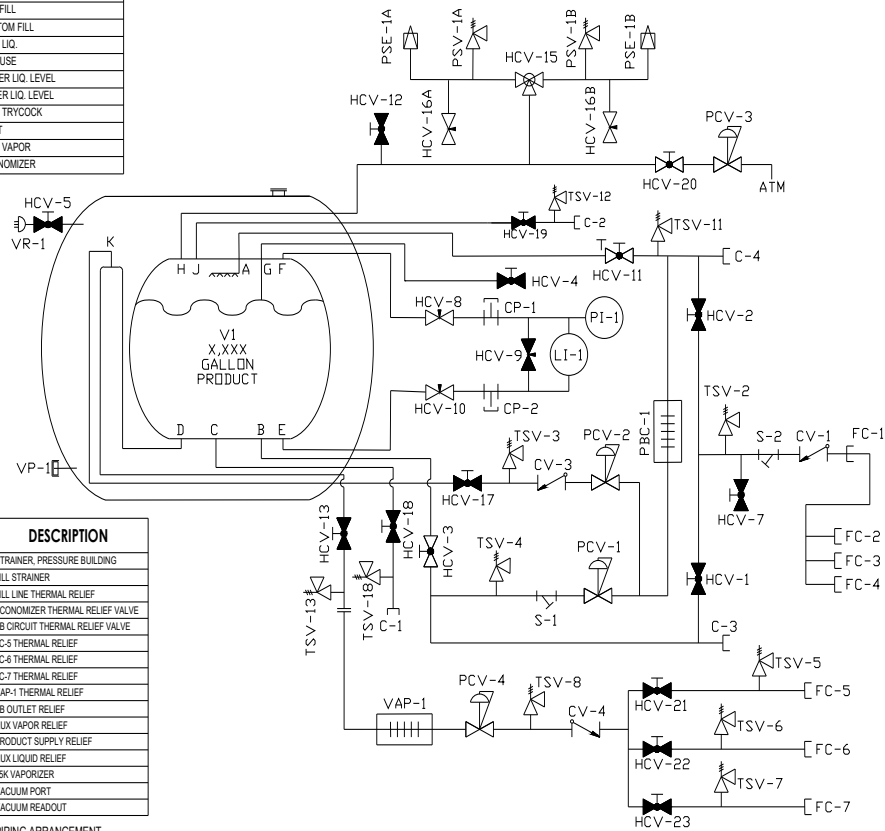
MODEL		DAGT 6000			DAGT 9000		
Design Codes		ASME Section VIII Div 1					
Services		LIN	LAR	LOX	LIN	LAR	LOX
SPECIFICATIONS							
Overall Length	(in/cm)	540 / 1371.6			516 / 1310.64		
Overall Height	(in/cm)	144.375 / 366.71			158.5 / 402.59		
Overall Width	(in/cm)	102 / 259.08			114.19/290.04		
Gross Capacity	(gal/L)	6,010 / 22,750			9,360 / 35,431		
Net Capacity	(gal/L)	5,770 / 21,842			8,990 / 34,031		
Tare Weight	(lbs/kg)	35,100 / 15,921			47,120 / 21,373		
Gross Weight	(lbs/kg)	75,400 / 34,200	104,900 / 47,582	92,200 / 41,821	109,200 / 49,532	154,600 / 70,125	135,000 / 61,235
PERFORMANCE							
MAWP (Tank)	(psig/barg)	250 / 17.2			250 / 17.2		
NER	% / day	0.35	0.22	0.22	0.24	0.15	0.15
PB Capacity	SCFH	20,000			25,000		

TAG #	DESCRIPTION
C-1	CONNECTION AUX LIQUID
C-2	CONNECTION AUX VAPOR
C-3	CONNECTION SEC. AUX LIQUID
C-4	CONNECTION SEC. AUX VAPOR
CP-1	LIQUID LEVEL LOW PRESSURE CONN
CP-2	LIQUID LEVEL HIGH PRESSURE CONN
CV-1	FILL LINE CHECK VALVE
CV-3	ECONOMIZER CHECK VALVE
CV-4	VAP-1 CHECK VALVE
FC-1	TANK FLANGE FILL CONNECTION
FC-2	FRONT FILL CONNECTION
FC-3	MID FILL CONNECTION
FC-4	REAR FILL CONNECTION
FC-5	FRONT GAS DELIVERY CONNECTION
FC-6	MID GAS DELIVERY CONNECTION
FC-7	REAR GAS DELIVERY CONNECTION
HCV-1	BOTTOM FILL VALVE
HCV-2	TOP FILL VALVE
HCV-3	PB INLET VALVE
HCV-4	FULL TRYCOCK VALVE
HCV-5	VACUUM GAUGE TUBE VALVE
HCV-7	FILL LINE DRAIN VALVE
HCV-8	LI-1 VAPOR PHASE VALVE
HCV-9	LI-1 EQUALIZATION VALVE
HCV-10	LI-1 LIQUID PHASE VALVE
HCV-11	PB OUTLET VALVE
HCV-12	VAPOR VENT VALVE
HCV-13	PRODUCT SUPPLY VALVE
HCV-15	SAFETY RELIEF SELECTOR VALVE
HCV-16A	RELIEF LINE PURGE VALVE
HCV-16B	RELIEF LINE PURGE VALVE
HCV-17	ECONOMIZER ISOLATION VALVE
HCV-18	AUX LIQUID VALVE
HCV-19	AUX VAPOR VALVE AT C-2
HCV-20	ECONOMIZER VENT VALVE
HCV-21	FC-5 ISOLATION VALVE
HCV-22	FC-6 ISOLATION VALVE
HCV-23	FC-7 ISOLATION VALVE
LI-1	LEVEL INDICATOR, INNER VESSEL
PBC-1	PRESSURE BUILD COIL
PCV-1	PRESSURE CONTROL VALVE
PCV-2	PRESSURE CONTROL VALVE
PCV-3	PRESSURE CONTROL VALVE
PCV-4	PRESSURE CONTROL VALVE
PI-1	PRESSURE INDICATOR GAUGE
PSE-1A	PRESSURE SAFETY ELEMENT, INR
PSE-1B	PRESSURE SAFETY ELEMENT, INR
PSV-1A	PRESSURE SAFETY VALVE, INR
PSV-1B	PRESSURE SAFETY VALVE, INR

INTERNAL LINE	
A	TOP FILL
B	BOTTOM FILL
C	AUX LIQ.
D	GAS USE
E	LOWER LIQ. LEVEL
F	UPPER LIQ. LEVEL
G	FULL TRYCOCK
H	VENT
J	AUX VAPOR
K	ECONOMIZER

TAG#	DESCRIPTION
S-1	STRAINER, PRESSURE BUILDING
S-2	FILL STRAINER
TSV-2	FILL LINE THERMAL RELIEF
TSV-3	ECONOMIZER THERMAL RELIEF VALVE
TSV-4	PB ORCUT THERMAL RELIEF VALVE
TSV-5	FC-5 THERMAL RELIEF
TSV-6	FC-6 THERMAL RELIEF
TSV-7	FC-7 THERMAL RELIEF
TSV-8	VAP-1 THERMAL RELIEF
TSV-11	PB OUTLET RELIEF
TSV-12	AUX VAPOR RELIEF
TSV-13	PRODUCT SUPPLY RELIEF
TSV-18	AUX LIQUID RELIEF
VAP-1	25K VAPORIZER
VP-1	VACUUM PORT
VR-1	VACUUM READOUT

### CUSTOMER STATION FLOW DIAGRAM



THERE MAY BE SOME DIFFERENCES IN THE VESSEL PIPING ARRANGEMENT DUE TO CHOICE BY MANUFACTURER. HOWEVER, AS A MINIMUM, V1 SHALL HAVE DUAL SAFETIES AND RUPTURE DISCS.

CHART IND., NEW PRAGUE, MN 56071

22197922

Chart Inc.  
U.S. : 1-800-400-4683  
Worldwide: 1-952-243-8800



© 2025 Chart Inc.  
PN 22305633  
www.ChartIndustries.com