

# TRIFECTA® PRO CO<sub>2</sub>

FOR BOTANICAL SUPERCRITICAL CO<sub>2</sub> EXTRACTION

The Trifecta® Pro CO<sub>2</sub> Supply System is the preferred solution for helping botanical extractors optimize processes and decrease operational costs. The unit can be operated at pressures up to 850 psig and can provide a continuous flow of high pressure carbon dioxide. Drawing liquid from a standard bulk tank, the Trifecta system boosts the liquid pressure in each tank through the use of an innovative, dual pass electric pressure building vaporizer. The Trifecta solution requires no down-time while refilling the bulk storage tank. This convenient solution eliminates the need for high maintenance rotating type equipment like pumps and compressors.



*Trifecta Pro CO<sub>2</sub>*

## MODEL HIGHLIGHTS

- Bottom withdrawal improves overall performance and reduces pressure building vaporizer icing
- Additional isolation valves for component servicing during use
- ThermaBlock™ 20kW Electric Vaporizer standard (480 V)
- Rotarex C-Stic capacitance level gauge with digital level display
- WIKA S-20 pressure transducers for bulk tank and tanks 1 & 2
- Allen-Bradley control panel with HMI screen standard

## OPTIONS

- Remote Monitoring (IoT) provides powerful remote alarm monitoring with control
- SCADA capable to integrate into production control systems

## PRODUCT HIGHLIGHTS

- System utilizes a standard (min 300 psig) CO<sub>2</sub> bulk tank to reduce investment and use existing assets
- No downtime – system maintains pressure and flow when bulk tank is filled, thus minimizing product losses associated with filling high pressure bulk tanks
- Cylinders switch by pressure instead of level to further reduce product loss and protect against pressure decay
- Robust design features streamlined all stainless steel piping with only five control valves and one integrated electronic control system (PLC) for increased durability and reliability
- Computer-controlled design simplifies installation, start-up and continuous operation
- Frame assembly features a protective top cover in a compact footprint with an elevated base for improved ventilation
- Available for CO<sub>2</sub> only (see other Trifecta Pro and XPro literature for LIN, LAR and LOX options)



Cooler By Design.®

# TRIFECTA® PRO CO<sub>2</sub>

FOR BOTANICAL SUPERCRITICAL CO<sub>2</sub> EXTRACTION

## Trifecta Pro Specifications

Model	Service	Peak Flow		Duration (hours)	MAWP		MAOP		Dimensions*		Weight	
		(lb/hr)	(kg/hr)		(psig)	(bar)	(psig)	(bar)	(in)	(cm)	(lb)	(kg)
Pro CO <sub>2</sub>	CO <sub>2</sub>	900	408.2	1	930	64.1	850	58.6	65 x 59 x 116.31	165 x 150 x 295.4	3001	1361
		<b>Sustained Flow</b>										
		780	353.8	8								

\*Height includes vent stack. Uncrated shipping height is 95.25in / 242cm

### SYSTEM REQUIREMENTS

- 15 Amp, 110 VAC power, dedicated circuit
- 40 Amp, 480 VAC power for electric Pressure Build
- CO<sub>2</sub> bulk storage tank with 300 psig minimum operating pressure
- One piping connection to bulk storage tank
- One piping connection to downstream process
- Optional: vent-to-bulk connection
- For gas applications – Electric Process Vaporizer with minimum MAWP of 930 psig

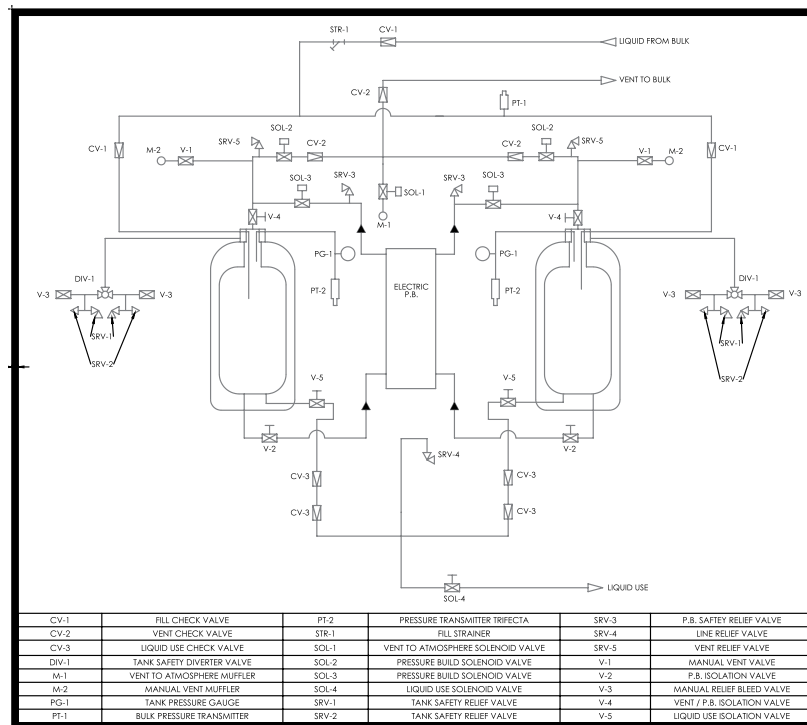
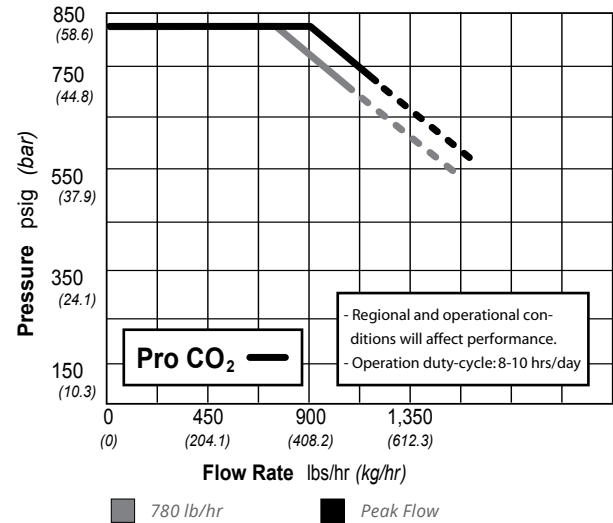


Chart Inc.  
U.S. : 1-800-400-4683  
Worldwide: 1-952-243-8800



© 2021 Chart Inc.  
PN 21524066  
www.chartindustries.com