

# TRIFECTA® XPRO

## LASER ASSIST GAS SUPPLY SYSTEM

The Trifecta® XPro Gas Supply System is the preferred solution for reliable and continuous laser assist gases for delivery pressures up to 550 psig and flow rates up to 15,000 scfh. Drawing liquid from a standard bulk tank, the Trifecta system boosts the liquid pressure by alternately feeding two liquid cylinders equipped with innovative multi-function pressure building vaporizers. The Trifecta solution has no downtime when refilling the bulk tank and minimal losses when compared with other laser assist gas solutions. This convenient solution eliminates high-pressure pumps, compressors, cylinder cradles, and surge tanks.



### TRIFECTA XPRO MODEL HIGHLIGHTS

- Bottom withdrawal improves overall performance and reduces pressure building vaporizer icing
- Yokogawa™ brand transmitters provide greater reliability
- Dual Liquid Level Analog DP gauges with equalization valve provides additional tank level monitoring
- Additional isolation valves for component servicing during use
- Trifecta XPro 600 now with standard Magnatrol automatic valves provide a more simple installation and better reliability
- Larger frame provides easier access to service components and provides for better air flow
- Added 4-way valves and improved electrical wiring allow swapping out transmitters without having to blow unit down

### OPTIONS

- External electric pressure building kit for cold weather installations with flow rates up to 15,000 scfh

### PRODUCT HIGHLIGHTS

- System utilizes standard MP (175 or 250 psig) bulk tank to reduce investment and use existing assets
- No downtime – system maintains pressure and flow when bulk tank is filled, thus minimizing product losses associated with filling high pressure bulk tanks
- Cylinders switch by pressure instead of level to further reduce product loss and protect against pressure decay
- Robust design features streamlined all stainless steel piping with only five control valves and one integrated electronic control system (PLC) for increased durability and reliability
- Computer-controlled design simplifies installation, start-up and continuous operation
- Frame assembly features a protective top cover in a compact footprint with an elevated base for improved ventilation
- Inconel and copper used where required in oxygen service model (meets CGA guidelines)
- Available for Nitrogen, Argon, and Oxygen service



# TRIFECTA® XPRO

LASER ASSIST GAS SUPPLY SYSTEM

## SPECIFICATIONS

Model	Flow (SCFH) (Nm <sup>3</sup> /h)	MAWP (psig) (barg)	MAOP (psig) (barg)	Dimensions (W x D x H) (in) (cm)	Weight (lb) (kg)
XPRO LIN/LAR-500 15K	15,000 425	500 34.5	450 31	65 x 59 x 95.25 165 x 150 x 242	1800 816.5
XPRO LOX-500 15K	15,000 425	500 34.5	450 31	65 x 59 x 95.25 165 x 150 x 242	1800 816.5
XPRO LIN/LAR-600 15K	15,000 425	600 41.4	550 38	65 x 59 x 95.25 165 x 150 x 242	1900 861.8

## SYSTEM REQUIREMENTS

- 15 amp, 110 VAC power, dedicated circuit
- Bulk storage tank with 125 psig minimum operating pressure
- External vaporizer, minimum 650 psig working pressure, sized for maximum flow rate
- One piping connection to bulk storage tank
- One piping connection to downstream process vaporizer
- High-flow pressure regulation

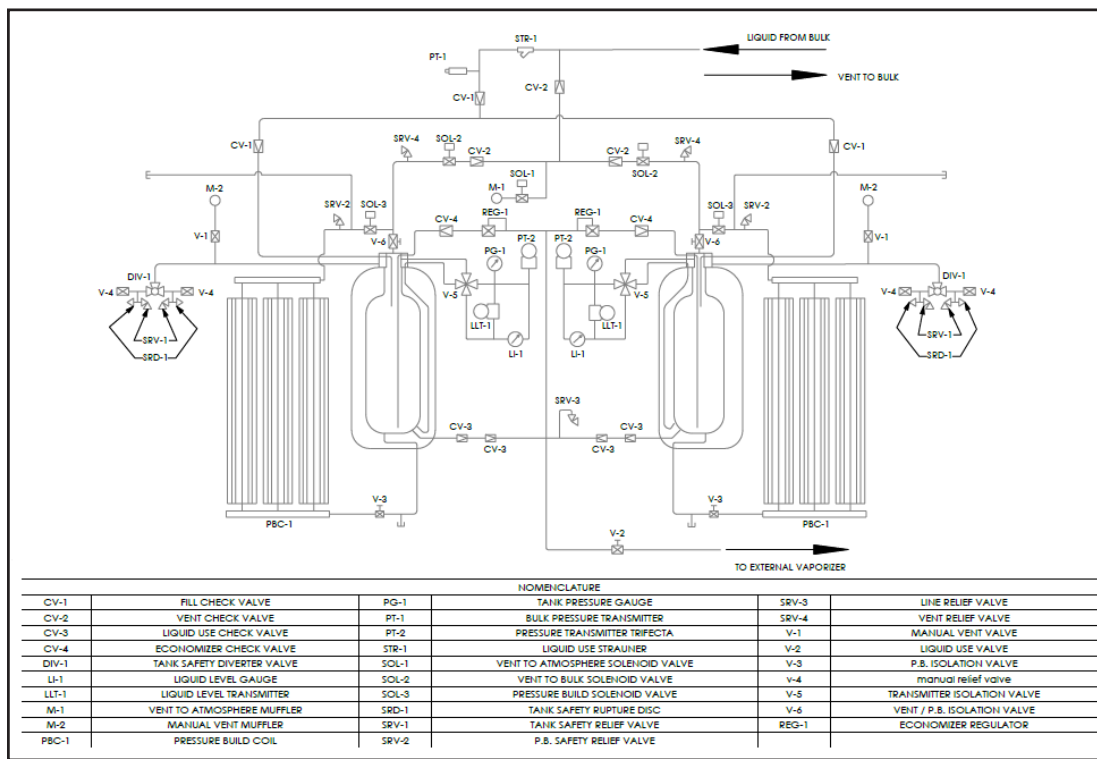
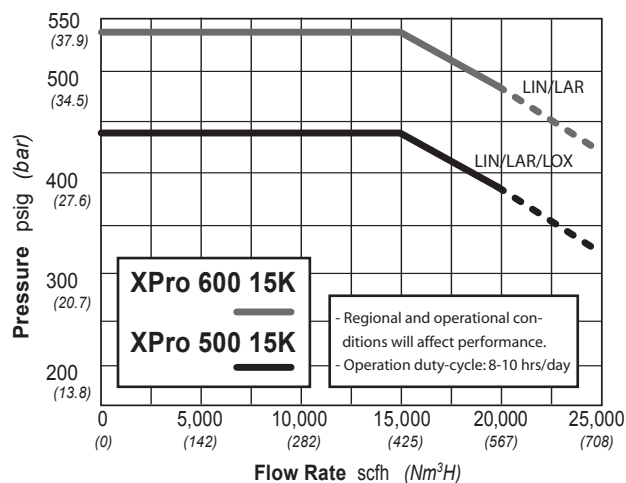


Chart Inc.  
U.S. : 1-800-400-4683  
Worldwide: 1-952-243-8800



© 2024 Chart Inc.  
PN 21376195  
www.chartindustries.com