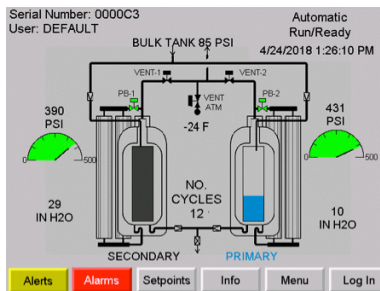


# TRIFECTA® PRO 30K

## LASER ASSIST GAS SUPPLY SYSTEM

The Trifecta® Pro 30K Gas Supply System is the preferred solution for reliable and continuous laser assist gases for delivery pressures up to 550 psig and flow rates up to 30,000 scfh. Drawing liquid from a standard bulk tank, the Trifecta system boosts the liquid pressure by alternately feeding two liquid cylinders equipped with innovative multi-function pressure building vaporizers. The Trifecta solution has no down-time and minimal losses when compared with other laser assist gas solutions. This convenient solution eliminates high-pressure pumps, compressors, cylinder cradles, and surge tanks.



### PRODUCT HIGHLIGHTS

#### TRIFECTA PRO MODEL HIGHLIGHTS

- Bottom withdrawal improves overall performance and reduces pressure building vaporizer icing
- Yokogawa™ brand transmitters provide greater reliability
- Dual Liquid Level Analog DP gauges with equalization valve provides additional tank level monitoring
- Additional isolation valves for component servicing during use
- Magnatrol automatic valves provide simpler installation and better reliability
- PLC controller with HMI screen provides better graphic display (shown above)

- System utilizes standard MP (175 or 250 psig) bulk tank to reduce investment and use existing assets
- No downtime – system maintains pressure and flow when bulk tank is filled, thus minimizing product losses associated with filling high pressure bulk tanks
- Cylinders switch by pressure instead of level to further reduce product loss and protect against pressure decay
- Robust design features streamlined all stainless steel piping with only five control valves and one integrated electronic control system (PLC) for increased durability and reliability
- Computer-controlled design simplifies installation, start-up and continuous operation
- Frame assembly features a protective top cover in a compact footprint with an elevated base for improved ventilation
- Plumbing configuration allows for an easy addition of stand alone pressure build vaporizers in the field
- Available for Nitrogen and Argon service
- External electric or ambient pressure building kit for high flow/cold weather installations to allow for flow rates up to 30,000 scfh

#### OPTIONS

- Remote Monitoring (IoT) provides powerful remote alarm monitoring with control
- SCADA capable to integrate into production control systems
- Optional stand adds 12" extension from the ground

# TRIFECTA® PRO 30K

LASER ASSIST GAS SUPPLY SYSTEM

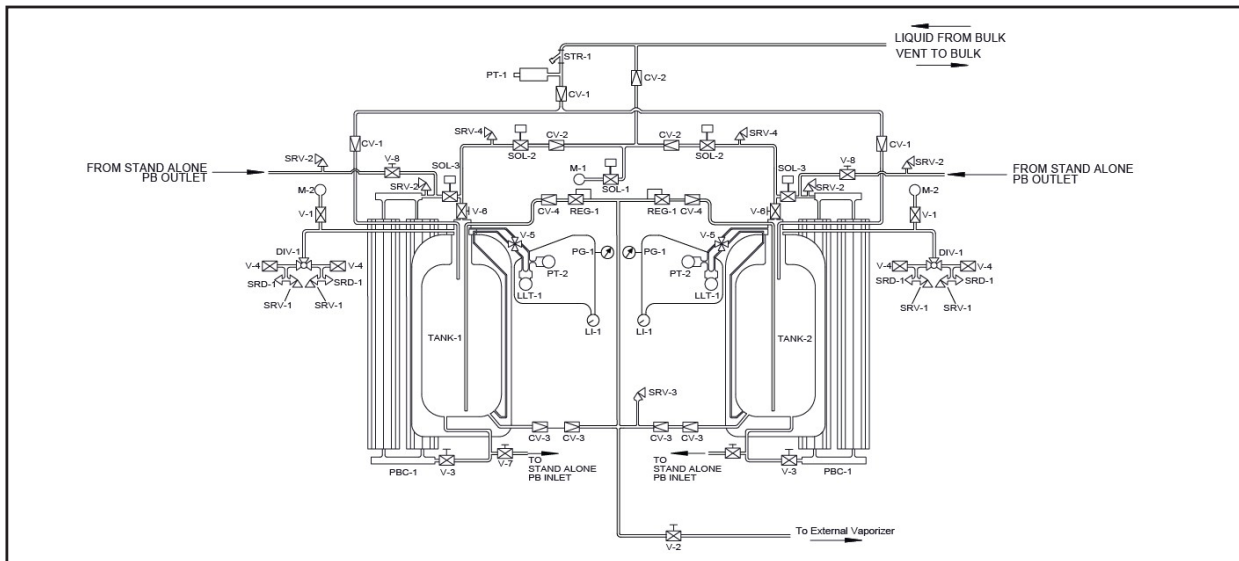
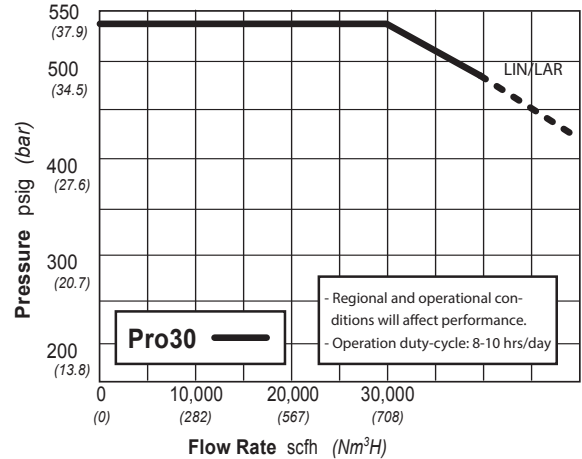
## SPECIFICATIONS

Model	Service	Flow		MAWP		MAOP		Dimensions (W x D x H)*		Weight	
		(SCFH)	(Nm <sup>3</sup> /h)	(psig)	(barg)	(psig)	(barg)	(in)	(cm)	(lb)	(kg)
Pro30	LIN/LAR	30,000	850	600	41.4	550	37.9	72 x 84 x 96	183 x 213 x 244	4500	2041

\* Height dimensions will change to elevate system. Optional stand adds 12" to the overall height of the system.

## SYSTEM REQUIREMENTS

- 15 amp, 110 VAC power, dedicated circuit
- Bulk storage tank with 125 psig minimum operating pressure
- External vaporizer, minimum 650 psig working pressure, sized for maximum flow rate
- One piping connection to bulk storage tank
- One piping connection to downstream process vaporizer
- High-flow pressure regulation



### NOMENCLATURE

CV-1	CHECK VALVE FILL	PG-1	TANK PRESSURE GAUGE	SRV-3	SAFETY RELIEF LIQUID USE
CV-2	CHECK VALVE VENT	PT-1	TRANSMITTER BULK PRESSURE	SRV-4	SAFETY RELIEF TANK ISOLATION
CV-3	CHECK VALVE LIQUID USE	PT-2	TRANSMITTER PRESSURE	V-1	VALVE MANUAL VENT
CV-4	CHECK VALVE ECON REG	STR-1	STRAINER FILL	V-2	VALVE LIQUID USE
DIV-1	DIVERTER VALVE SAFETY	SOL-1	SOLENOID VALVE VENT TO ATM	V-3	VALVE PB ISOLATION
LI-1	TANK LIQUID LEVEL GAUGE	SOL-2	SOLENOID VALVE VENT TO BULK	V-4	VALVE SAFETY PRESSURE RELIEF
LLT-1	TRANSMITTER LIQUID LEVEL	SOL-3	SOLENOID VALVE PRESSURE BUILD	V-5	VALVE TRANSMITTER ISOLATION
M-1	MUFFLER VENT TO ATM	SRD-1	RUPTURE DISC TANK	V-6	VALVE TANK ISOLATION
M-2	MUFFLER MANUAL VENT	SRV-1	SAFETY RELIEF TANK	REG-1	REGULATOR ECON
PBC-1	PRESSURE BUILD COIL	SRV-2	SAFETY RELIEF PRESSURE BUILD		

Chart Inc.  
U.S. : 1-800-400-4683  
Worldwide: 1-952-243-8800



© 2026 Chart Inc.  
PN 21341330 30K  
www.chartindustries.com