

TECHNICAL DATA SHEET



Spencer single-stage centrifugal scroll blowers provide dependable air or gas movement at a wide range of selected pressures and volumes. They offer stable performance from minimum to rated flow without surge or pulsations. Power consumption is proportional to the volume output. System volume adjustments can be easily made by throttling with an optional inlet or outlet damper.

These blowers are designed for many types of plant and process applications, positive and negative, which require uniform pressure air flow over an entire volume range. Some typical applications include combustion air, cooling, drying, ventilating, pneumatic conveying, and material handling.

Product Features

Technical Data

Volume to: 50-10,000 scfm
Pressure to: 0-60" H ₂ O
Vacuum to: 0-52" H ₂ O
Operating speed: 3500 rpm
Outlet connection: flange 125lb/150lb ANSI drilling
Motor: standard shaft

Accessories

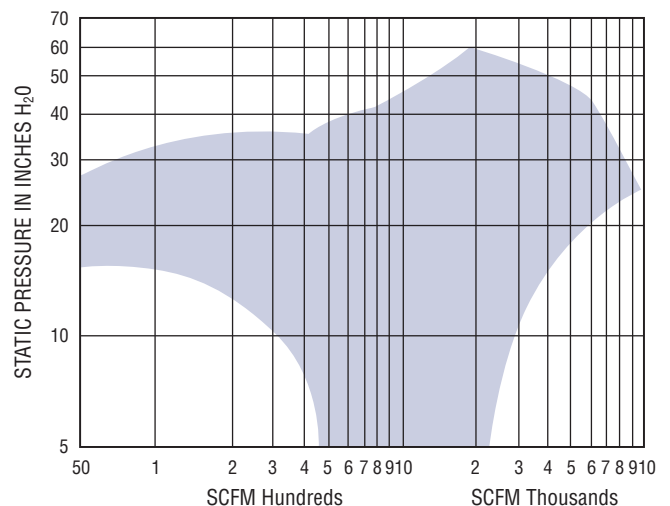
Inlet flange, 125lb/150lb ANSI drilling
Companion flange, 125lb/150lb ANSI drilling
Filters, silencers or combination filter/silencers
Inlet/Outlet damper for flow control
Tubing and fittings for system piping

► Note: Specifications may vary and change without notice.

Performance Range

Performance at Standard Density

(Air at 70 °F, Relative Humidity of 36%, Inlet Pressure 14.7 psia) 3500 rpm



► The graph above shows the overall performance range for this product line. Any desired volume/pressure combination within the shaded area may be obtained by selection of the appropriate blower model.

Standard Features

Flanged outlet with standard ANSI B16.5 125lb/150lb drilling for ease of installation.

Six standard outlet positions provide flexibility of air piping placement and layout.

Standard shaft motor. ODP or TEFC motor enclosure is standard.

Direct drive Arrangement No. 4, with impeller mounted directly on motor shaft.

Direct drive Arrangement No. 8 or belt drive Arrangement No. 9 is available upon request.

Standard finish of epoxy primer with urethane topcoat

Heavy-duty $\frac{3}{16}$ " welded steel housing and motor support. Heavy-gauge steel absorbs shock of sudden back pressure. If damaged, sections can be repaired or replaced.

High efficiency wheel and housing design results in optimum efficiency ratings and lower sound levels.

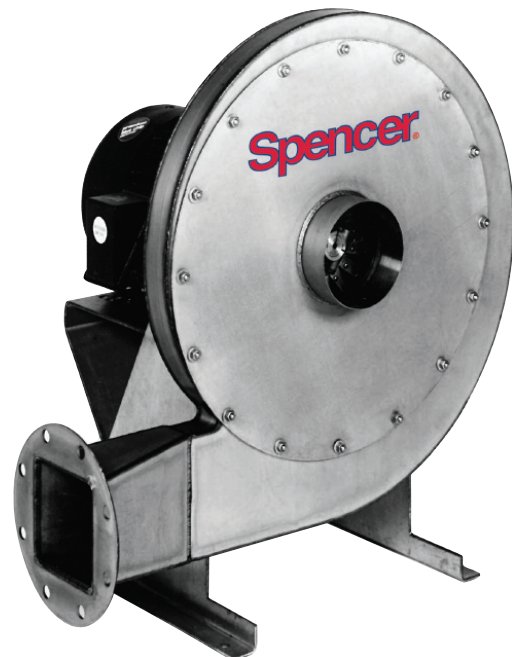
Radial bladed aluminum impeller. Maximum vibration tolerance 1.5 mils total amplitude. Each impeller is statically and dynamically balanced prior to shipment.

Cork mounting pads. Blower stands free on cork pads; no special foundation, bolts or grout required.

► Note: Specifications may vary and change without notice.

Optional Features

- Stainless steel or other special materials.
- Housing of $\frac{1}{4}$ " or $\frac{3}{8}$ " steel plate.
- Mechanical seal for gas-tight construction.
- Spark-resistant construction.
- High temperature construction with heat slinger.
- Epoxy or other coatings for chemical applications.
- Custom designs.
- Special motor enclosures – chemical duty, high-efficiency, explosion-proof.
- Casing drains.
- Backward curved impellers to reduce noise and increase operating stability at low flows.
- Rotatable discharge.



Single-stage scroll blower fabricated from stainless steel.

Single-Stage Pressure Blower Ratings

Performance Ratings (Inches H₂O @ 70 °F, 14.7 PSIA, 3500 RPM)

Catalog Number	50 CFM		100 CFM		150 CFM		200 CFM		250 CFM		300 CFM		350 CFM		400 CFM	
	Δ P	BHP	Δ P	BHP	Δ P	BHP	Δ P	BHP	Δ P	BHP	Δ P	BHP	Δ P	BHP	Δ P	BHP
0303 SS	11.25	1.16	11.44	1.19	11.51	1.21	11.50	1.24	11.43	1.27	11.29	1.31	11.10	1.35	10.82	1.40
050¾ SS	15.7	0.5	15.7	.65	15.6	.8	15.2	1.0	14.6	1.1	13.6	1.3	12.2	1.4	10.2	1.6
0501 SS					14.4	.8	14.3	.9	14.0	1.1	13.5	1.2	12.9	1.3	12.1	1.5
0501½ SS							15	1.1	14.9	1.2	14.9	1.4	14.8	1.5	14.4	1.7
0502 SS					16.4	1.0	16.4	1.1	16.3	1.2	16.1	1.3	16.0	1.5	15.9	1.6
070¾ SS	22.3	1.0	22.3	1.2	22	1.4	21.8	1.6	21.3	1.8	20.5	2.0	19.3	2.1	17.6	2.3
0702 SS											23.7	2.1	23.3	2.3	23.0	2.5
0703 SS											23.9	2.6	23.5	2.8	23.3	3.0
0705 SS													24.2	2.9	24.0	3.2
1001½ SS	27.5	1.4	27.5	1.6	27.4	1.8	27.2	2.0	26.8	2.1	25.9	2.3	24.4	2.5	22.5	2.7
1002 SS			30.0	2.0	29.9	2.2	29.8	2.5	29.4	2.7	28.9	2.9	28.2	3.1	27.2	3.3
1003 SS													28.6	3.2	28.5	3.4
1005 SS															28.6	3.5
1205 SS											34.1	4.2	34.2	4.4	34.2	4.6

Performance Ratings (Inches H₂O @ 70 °F, 14.7 PSIA, 3500 RPM)

Catalog Number	500 CFM		600 CFM		800 CFM		1000 CFM		1200 CFM		1400 CFM		1600 CFM		1800 CFM	
	Δ P	BHP	Δ P	BHP	Δ P	BHP	Δ P	BHP	Δ P	BHP	Δ P	BHP	Δ P	BHP	Δ P	BHP
050¾ SS	5.1	1.9														
0501 SS	10.1	1.8	7.7	2.1	1.8	2.6										
0501½ SS	13.2	2.0	11.5	2.3	7.2	2.9										
0502 SS	15.3	1.9	14.3	2.3	11.6	2.9	8.4	3.5	4.6	4.1						
0503 SS	16.3	2.0	15.9	2.3	14.4	2.9	12.2	3.4	9.5	4.0	6.5	4.5				
0505 SS	16.8	2.6	16.7	2.9	16.2	3.4	15.1	3.9	13.7	4.5	12.0	5.0	10.1	5.5	7.9	6.0
0507 SS	16.7	3.1	16.7	3.2	16.6	3.7	16.2	4.2	15.5	4.7	14.5	5.2	13.2	5.7	11.6	6.2
070¾ SS	12.3	2.6														
0702 SS	21.5	2.8	19.7	3.2	14.5	4.0										
0703 SS	23.0	3.3	22.0	3.7	19.4	4.5	15.0	5.3	9.0	6.1						
0705 SS	24.0	3.5	23.5	3.9	22.0	4.6	19.5	5.4	15.8	6.1	11.4	6.8				
0707 SS	26.0	4.2	25.9	4.7	25.5	5.4	24.0	6.2	22.7	7.0	20.2	7.8	17.2	8.7	13.3	9.4
0710 SS	26.0	5.3	25.9	5.4	25.5	6.3	25.0	6.8	24.0	7.7	22.8	8.5	20.8	9.3	18.3	10.0
0715 SS							25.3	7.8	24.8	8.7	24.0	9.4	23.0	10.0	22.0	10.8
1002 SS	23.4	3.8														
1003 SS	28.2	3.8	27.4	4.3	24.6	5.2	20.3	6.1								
1005 SS	28.7	3.9	28.5	4.3	27.5	5.2	25.2	6.0	21.4	6.8						
1007 SS			29.4	5.4	29.3	6.2	28.8	6.9	27.8	7.7	26.3	8.5	24.2	9.2	21.6	10.0
1010 SS					30.0	7.2	30.0	8.0	29.8	8.8	29.2	9.7	28.1	10.5	26.4	11.3
1015 SS					31.7	8.7	31.7	9.6	31.6	10.5	31.5	11.3	31.2	12.2	30.8	13.0
1020 SS									31.9	13.1	31.8	13.9	31.8	14.7	31.7	15.5
1025 SS									33.8	13.6	33.7	14.4	33.6	15.3	33.5	16.1
1030 SS					35.3	12.1	35.2	13.0	35.1	14.0	35.0	14.9	34.8	15.8	34.6	16.7
1205 SS	34.1	5.0	33.8	5.4	32.0	6.2	27.7	7.0	20.8	7.9						
1207 SS			36.0	6.2	35.9	7.3	35.3	8.4	34.2	9.5	32.7	10.5	30.7	11.6	28.4	12.7
1210 SS					35.4	8.1	35.5	9.1	35.2	10.2	34.4	11.2	33.1	12.2	31.2	13.3
1215 SS							37.6	11.0	37.8	12.0	37.7	13.1	37.4	14.3	36.8	15.4
1220 SS									36.2	13.5	36.1	14.6	36.0	15.7	35.9	16.8
1225 SS									40.1	16.3	40.0	17.4	39.6	18.3	39.5	19.4
1230 SS									39.2	20.6	39.0	21.5	38.9	22.3	38.8	23.1
1240 SS							42.0	22.2	42.0	23.5	42.0	24.7	42.0	25.9	41.9	27.1

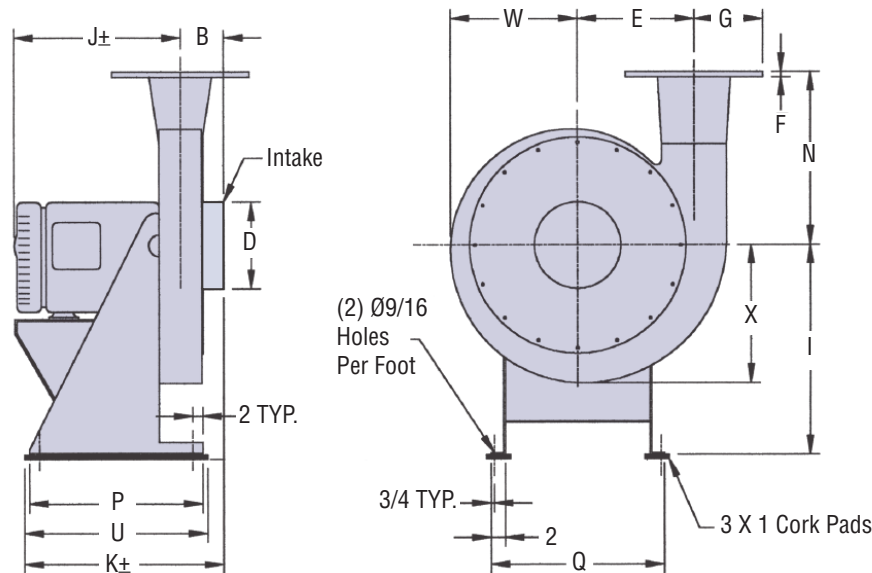
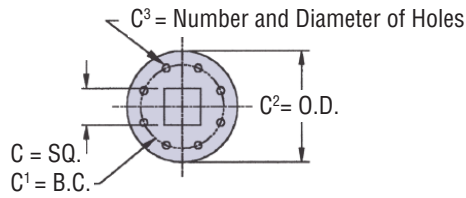
Single-Stage Pressure Blower Ratings

Performance Ratings (Inches H ₂ O @ 70 °F, 14.7 PSIA, 3500 RPM)																
Catalog Number	500 CFM		600 CFM		800 CFM		1000 CFM		1200 CFM		1400 CFM		1600 CFM		1800 CFM	
	Δ P	BHP	Δ P	BHP	Δ P	BHP	Δ P	BHP	Δ P	BHP	Δ P	BHP	Δ P	BHP	Δ P	BHP
1505 SS	40.2	5.7	40.2	6.2	38.7	7.3	35.0	8.4	28.8	9.5						
1507 SS					41.6	8.1	40.2	9.3	37.5	10.6	32.2	11.8	22.2	13.0		
1510 SS					44.0	9.2	43.3	11.0	42.6	12.7	41.1	14.4	39.1	16.0	36.8	17.7
1515 SS							40.1	11.5	40.1	12.9	39.8	14.5	39.8	15.9	39.6	17.2
1520 SS													39.8	16.6	39.8	17.9
1525 SS													42.7	19.2	42.5	20.5
1707 SS	49.7	8.6	49.7	9.2	49.1	10.3	47.7	11.5	45.6	12.6	42.8	13.8	39.2	14.9	35.2	16.1
2020 SS									64.0	20.2	63.9	22.0	63.1	23.8	61.7	25.6
2025 SS													56.9	23.7	56.9	25.5

Performance Ratings (Inches H ₂ O @ 70 °F, 14.7 PSIA, 3500 RPM)																
Catalog Number	2000 CFM		2200 CFM		2500 CFM		3000 CFM		3500 CFM		4000 CFM		4500 CFM		5000 CFM	
	Δ P	BHP	Δ P	BHP	Δ P	BHP	Δ P	BHP	Δ P	BHP	Δ P	BHP	Δ P	BHP	Δ P	BHP
0507 SS	9.8	6.7	7.9	7.2												
0710 SS	15.5	10.8	11.5	13.0												
0715 SS	20.3	11.5	18.5	12.3	15.0	16.8										
1010 SS	23.9	12.2	20.5	13.0												
1015 SS	30.1	13.9	29.1	14.8	27.0	16.1	22.2	18.2								
1020 SS	31.6	16.3	31.3	17.1	30.7	18.2	29.0	20.2	26.6	22.2	23.4	24.2	19.7	26.2		
1025 SS	33.2	17.0	32.9	17.8	32.2	19.1	30.8	21.3	29.0	23.4	27.0	25.6	24.2	27.7	22.3	29.9
1030 SS	34.3	17.7	34.0	18.6	33.4	20.0	32.3	22.3	30.8	24.6	29.0	26.9	26.9	29.3	24.7	31.6
1207 SS	25.7	13.8	22.8	14.8												
1210 SS	28.5	14.3	25.1	15.4												
1215 SS	35.8	16.5	34.5	17.6	31.8	19.3	24.9	22.1								
1220 SS	35.7	17.8	35.5	18.7	34.8	20.3	32.9	22.9	29.9	25.4	25.3	28.0	18.4	30.5		
1225 SS	39.4	20.9	39.2	21.4	38.6	23.0	37.1	25.6	34.6	28.2	31.1	30.8	26.4	33.4	20.3	36.0
1230 SS	38.8	23.9	38.7	24.8	38.4	26.0	37.7	28.1	36.6	30.2	34.8	32.3	32.4	34.3	29.3	36.4
1240 SS	41.8	28.3	41.7	29.5	41.3	31.3	40.5	34.3	39.3	37.4	37.9	40.4	36.2	43.4	34.2	46.4
1510 SS	34.4	19.3	32.1	21.0												
1515 SS	39.4	18.6	38.9	20.0	37.7	22.0	33.4	25.4								
1520 SS	39.6	19.2	39.4	20.5	38.7	22.4	36.5	25.6	32.0	28.8	23.6	32.0				
1525 SS	42.5	21.8	42.5	23.2	42.2	25.2	41.2	28.5	39.1	31.8	35.5	35.2	29.4	38.5		
1530 SS	42.9	23.7	42.9	24.9	42.9	26.8	42.4	30.0	41.2	33.2	39.3	36.3	36.4	39.5	32.8	42.7
1540 SS	44.7	25.4	44.7	26.7	44.5	28.6	43.9	31.7	42.8	34.8	41.3	37.9	39.2	41.0	36.7	44.1
1550 SS	43.5	29.4	43.5	30.7	43.5	32.6	43.3	35.8	43.0	39.0	42.6	42.3	42.0	45.5	41.2	48.7
1707 SS	30.5	17.2														
2020 SS	59.5	27.4	56.5	29.2	50.5	31.8	37.2	36.3								
2025 SS	56.7	27.4	56.4	29.3	55.6	32.1	53.6	36.8	50.7	41.5	47.2	46.2	43.1	50.9	38.6	55.6
2050 SS			58.5	34.2	58.4	37.5	57.8	43.0	56.5	48.5	54.7	54.0	52.5	59.5	49.9	65.0

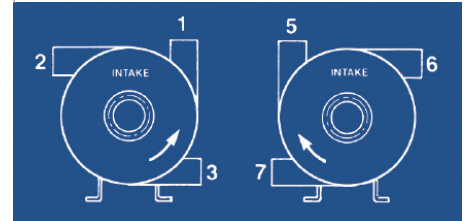
Performance Ratings (Inches H ₂ O @ 70 °F, 14.7 PSIA, 3500 RPM)																
Catalog Number	5500 CFM		6000 CFM		6500 CFM		7000 CFM		7500 CFM		8000 CFM		9000 CFM		10000 CFM	
	Δ P	BHP	Δ P	BHP	Δ P	BHP	Δ P	BHP	Δ P	BHP	Δ P	BHP	Δ P	BHP	Δ P	BHP
1025 SS	19.8	32.0														
1030 SS	22.3	33.9	19.8	36.2												
1230 SS	25.6	38.5	21.4	40.6												
1240 SS	31.8	49.4	28.8	52.5	24.8	55.5										
1530 SS	28.4	45.8	23.6	49.0												
1540 SS	33.9	47.2	30.8	50.3	27.5	53.4										
1550 SS	40.2	51.9	39.0	55.1	37.7	58.3	36.2	61.6	34.5	64.8	32.7	68.0	28.7	74.4	24.3	80.9
2025 SS	33.9	60.3	29.0	65.0												
2050 SS	46.7	70.5	42.8	76.0												

Discharge Flange



Outlet Position:

Available outlet position as viewed from the intake end of the machine. Specify position on order.



Notes:

1. External weight or stress must not be transmitted to the housing. Flexible connections are recommended.
2. Outlet position must be specified when order is placed.
3. Dimensions shown cover AC-TEFC units. All dimensions are for reference purposes only, unless certified. Do not use for construction purposes.

Catalog Number	Horsepower	Max. Frame	C ¹	C ²	C ³	D	C	B	E	F	G	I	J±	K±	N	P	Q	U	W	X	Approx. Net Wt. (lbs)
0303 SS	2, 3, 5	182T	9 ¹ / ₂	11	8 ⁻⁷ / ₈	6	5 ⁵ / ₈	4 ¹ / ₆	7 ¹⁵ / ₁₆	³ / ₁₆	5 ¹ / ₂	13 ⁷ / ₈	15 ¹ / ₂	15 ¹ / ₂	11	12 ³ / ₄	14	14	8 ¹ / ₂	9	200
050 ³ / ₄ SS	2	145T	7 ¹ / ₂	9	8 ⁻³ / ₄	5	3 ¹ / ₄	3 ¹ / ₄	10 ¹³ / ₁₆	³ / ₁₆	4 ¹ / ₂	17	12 ¹ / ₄	16	14 ⁷ / ₁₆	18	18	19	11 ⁵ / ₈	12 ¹ / ₂	235
0501 SS	2, 3	182T	9 ¹ / ₂	11	8 ⁻⁷ / ₈	6	4 ³ / ₄	3 ⁷ / ₁₆	10 ¹³ / ₁₆	³ / ₁₆	5 ¹ / ₂	17	13 ³ / ₄	16 ¹ / ₂	14 ⁷ / ₁₆	18	18	19	11 ⁵ / ₈	12 ¹ / ₂	240
0501 ¹ / ₂ SS	3	182T	9 ¹ / ₂	11	8 ⁻⁷ / ₈	6	4 ³ / ₄	3 ⁵ / ₈	10 ¹³ / ₁₆	³ / ₁₆	5 ¹ / ₂	17	13 ³ / ₄	16 ³ / ₄	14 ⁷ / ₁₆	18	18	19	11 ⁵ / ₈	12 ¹ / ₂	240
0502 SS	3, 5	184T	9 ¹ / ₂	11	8 ⁻⁷ / ₈	6	5 ⁹ / ₁₆	4	10 ¹³ / ₁₆	³ / ₁₆	5 ¹ / ₂	17	15	17 ¹ / ₂	13 ⁷ / ₁₆	18	18	19	11 ⁵ / ₈	12 ¹ / ₂	265
0503 SS	3, 5	184T	11 ³ / ₄	13 ¹ / ₂	8 ⁻⁷ / ₈	8	4 ³ / ₄	4 ³ / ₈	10 ¹³ / ₁₆	³ / ₁₆	6 ³ / ₄	18	15	18 ¹ / ₂	14 ¹³ / ₁₆	18	18	19	11 ⁵ / ₈	12 ¹ / ₂	270
0505 SS	5, 7 ¹ / ₂	213T	14 ¹ / ₄	16	12-1	10	6 ¹ / ₄	4 ³ / ₄	10 ¹³ / ₁₆	³ / ₁₆	8	21	19 ¹ / ₂	19	14 ¹ / ₄	18	18	19	11 ⁵ / ₈	12 ¹ / ₂	275
0507 SS	5, 7 ¹ / ₂	213T	14 ¹ / ₄	16	12-1	10	7	4 ³ / ₄	12 ¹ / ₁₆	³ / ₁₆	8	21	19 ¹ / ₂	19	17 ³ / ₁₆	18	18	19	12 ³ / ₄	14 ¹ / ₈	320
070 ³ / ₄ SS	2, 3	182T	7 ¹ / ₂	9	8 ⁻³ / ₄	5	3 ¹ / ₄	3 ¹ / ₄	10 ¹³ / ₁₆	³ / ₁₆	4 ¹ / ₂	17	13 ¹ / ₂	16	14 ⁷ / ₁₆	18	18	19	11 ⁵ / ₈	12 ¹ / ₂	237
0702 SS	3, 5	184T	9 ¹ / ₂	11	8 ⁻⁷ / ₈	6	4 ³ / ₄	3 ⁷ / ₁₆	10 ¹³ / ₁₆	³ / ₁₆	5 ¹ / ₂	17	14 ³ / ₄	16 ¹ / ₂	14 ⁷ / ₁₆	18	18	19	11 ⁵ / ₈	12 ¹ / ₂	242
0703 SS	5, 7 ¹ / ₂	213T	9 ¹ / ₂	11	8 ⁻⁷ / ₈	6	4 ³ / ₄	3 ⁵ / ₈	10 ¹³ / ₁₆	³ / ₁₆	5 ¹ / ₂	17	18 ¹ / ₂	16 ³ / ₄	14 ⁷ / ₁₆	18	18	19	11 ⁵ / ₈	12 ¹ / ₂	279
0705 SS	5, 7 ¹ / ₂	213T	9 ¹ / ₂	11	8 ⁻⁷ / ₈	6	5 ⁹ / ₁₆	4	10 ¹³ / ₁₆	³ / ₁₆	5 ¹ / ₂	17	18 ³ / ₄	17 ¹ / ₂	13 ⁷ / ₁₆	18	18	19	11 ⁵ / ₈	12 ¹ / ₂	284
0707 SS	7 ¹ / ₂ , 10	215T	11 ³ / ₄	13 ¹ / ₂	8 ⁻⁷ / ₈	8	4 ³ / ₄	4 ³ / ₈	10 ¹³ / ₁₆	³ / ₁₆	6 ³ / ₄	18	19	18 ¹ / ₂	14 ¹³ / ₁₆	18	18	19	11 ⁵ / ₈	12 ¹ / ₂	334
0710 SS	10, 15	254T	14 ¹ / ₄	16	12-1	10	6 ¹ / ₄	4 ³ / ₄	10 ¹³ / ₁₆	³ / ₁₆	8	21	24 ¹ / ₂	19	14 ¹ / ₄	18	24	19	11 ⁵ / ₈	12 ¹ / ₂	374
0715 SS	15, 20	256T	14 ¹ / ₄	16	12-1	10	7	4 ³ / ₄	12 ¹ / ₁₆	³ / ₁₆	8	21	24 ¹ / ₂	19	17 ³ / ₁₆	18	24	19	12 ³ / ₄	14 ¹ / ₈	394

Catalog Number	Horsepower	Max. Frame	C ¹	C ²	C ³	D	C	B	E	F	G	I	J±	K±	N	P	Q	U	W	X	Approx. Net Wt. (lbs)
1001½ SS	2, 3	182T	7½	9	8-¾	5	3¾	4¼	12 ⁵ / ₁₆	¾	4½	22	13¾	20½	15 ⁵ / ₈	21¾	24	23	13¼	13 ⁷ / ₁₆	294
1002 SS	3, 5	184T	7½	9	8-¾	5	4¾	4¼	14 ³ / ₈	¾	4½	22	14¾	20½	19¼	21¾	24	23	15 ⁷ / ₁₆	16 ⁷ / ₁₆	299
1003 SS	5, 7½	213T	9½	11	8-7/8	6	6¾	4½	14 ³ / ₈	¾	5½	22	18½	21	19¼	21¾	24	23	15 ⁷ / ₁₆	16 ⁷ / ₁₆	300
1005 SS	5, 7½	213T	9½	11	8-7/8	6	6¾	4¾	14 ³ / ₈	¾	5½	22	18¾	21¼	19¼	21¾	24	23	15 ⁷ / ₁₆	16 ⁷ / ₁₆	331
1007 SS	7½, 10	215T	11¾	13½	8-7/8	8	7¾	5¼	14 ³ / ₈	¾	6¾	22	19	22½	17 ⁷ / ₈	21¾	24	23	15 ⁷ / ₁₆	16 ⁷ / ₁₆	345
1010 SS	10, 15	254T	14¼	16	12-1	10	6¾	5¾	14 ³ / ₈	¾	8	27	24½	26½	19¾	24	24	25	15 ⁷ / ₁₆	16 ⁷ / ₁₆	395
1015 SS	10, 15, 20	256T	17	19	12-1	12	9¾	6¼	14 ³ / ₈	¾	9½	27	25	27¾	19	24	24	25	15 ⁷ / ₁₆	16 ⁷ / ₁₆	414
1020 SS	20, 25, 30	286TS	17	19	12-1	12	9¾	6¼	16 ¹ / ₈	¾	9½	27	27½	27 ⁷ / ₈	22 ⁷ / ₈	24	24	25	16 ⁷ / ₈	18 ¹³ / ₁₆	473
1025 SS	20, 25, 30, 40	324TS	18¾	21	*12-1½	14	12¾	6¾	14 ⁵ / ₈	¾	10½	27	30¾	27¾	22 ⁷ / ₈	24	24	25	16 ⁷ / ₈	18 ¹³ / ₁₆	547
1030 SS	25, 30, 40	324TS	18¾	21	*12-1½	14	12¾	6¾	16 ¹ / ₈	¾	10½	27	30 ⁷ / ₈	28¾	24 ⁵ / ₈	24	24	25	17 ¹¹ / ₁₆	19 ³ / ₁₆	551
1205 SS	5, 7½	213T	9½	11	8-7/8	6	6¾	4¾	14 ³ / ₈	¾	5½	22	18½	20½	19¼	21¾	24	23	15 ⁷ / ₁₆	16 ⁷ / ₁₆	345
1207 SS	7½, 10, 15	254T	11¾	13½	8-7/8	8	7¾	4 ⁷ / ₈	14 ³ / ₈	¾	6¾	22	23¾	21½	19¼	21¾	24	23	15 ⁷ / ₁₆	16 ⁷ / ₁₆	355
1210 SS	10, 15	254T	11¾	13½	8-7/8	8	7¾	5¼	14 ³ / ₈	¾	6¾	22	24	22¼	17 ⁷ / ₈	21¾	24	23	15 ⁷ / ₁₆	16 ⁷ / ₁₆	407
1215 SS	15, 20, 25	284TS	14¼	16	12-1	10	8 ⁵ / ₈	5¾	14 ³ / ₈	¾	8	27	27¼	26½	19	24	24	25	15 ⁷ / ₁₆	16 ⁷ / ₁₆	428
1220 SS	20, 25, 30	286TS	17	19	12-1	12	9¾	5 ⁷ / ₈	16 ¹ / ₈	¾	9½	27	27¼	27	22 ⁷ / ₈	24	24	25	16 ⁷ / ₈	18 ¹³ / ₁₆	473
1225 SS	25, 30, 40	324TS	17	19	*12-1	12	11¾	6	16 ¹ / ₈	¾	9½	27	30	27 ¹ / ₈	24 ³ / ₈	24	24	25	17 ¹¹ / ₁₆	19 ³ / ₁₆	549
1230 SS	30, 40	324TS	18¾	21	*12-1½	14	12¾	6¾	16 ¹ / ₈	¾	10½	27	32½	28 ⁵ / ₈	24 ⁵ / ₈	24	24	25	17 ¹¹ / ₁₆	19 ³ / ₁₆	554
1240 SS	40, 50, 60	364TS	21¼	23½	16-1½	16	13 ⁵ / ₈	6¾	16 ¹ / ₈	¾	11¾	27	32½	28 ⁵ / ₈	23 ¹¹ / ₁₆	24	24	25	17 ¹¹ / ₁₆	19 ³ / ₁₆	561
1505 SS	5, 7½, 10	215T	9½	11	8-7/8	6	6¾	4½	14 ¹ / ₈	¾	5½	22	18¾	21	19¼	21¾	24	23	16 ³ / ₁₆	16 ¹¹ / ₁₆	360
1507 SS	7½, 10, 15	254T	11¾	13½	8-7/8	8	7¾	4 ⁵ / ₈	14 ¹ / ₈	¾	6¾	22	23 ⁵ / ₈	21	21 ⁹ / ₁₆	21¾	24	23	16 ³ / ₁₆	16 ¹¹ / ₁₆	365
1510 SS	10, 15, 20, 25	284TS	11¾	13½	8-7/8	8	7¾	5	14 ¹ / ₈	¾	6¾	22	26½	21¾	20 ³ / ₁₆	21¾	24	23	16 ³ / ₁₆	16 ¹¹ / ₁₆	420
1515 SS	15, 20, 25	284TS	14¼	16	*12-1	10	9¾	5½	16 ¹ / ₈	¾	8	27	26 ⁷ / ₈	26¼	24 ³ / ₈	24	24	25	17 ¹¹ / ₁₆	19 ³ / ₁₆	432
1520 SS	20, 25, 30	286TS	14¼	16	12-1	10	8 ⁵ / ₈	6¼	16 ¹ / ₈	¾	8	27	27 ³ / ₈	27 ¹ / ₈	24 ³ / ₈	24	24	25	17 ¹¹ / ₁₆	19 ³ / ₁₆	481
1525 SS	25, 30, 40	324TS	17	19	*12-1	12	10¾	6¼	16 ¹ / ₈	¾	9½	27	30½	27¾	24 ³ / ₈	24	24	25	17 ¹¹ / ₁₆	19 ³ / ₁₆	550
1530 SS	30, 40, 50	326TS	18¾	21	*12-1½	14	12¾	6¾	16 ¹ / ₈	¾	10½	27	31	28¾	24 ⁵ / ₈	24	24	25	17 ¹¹ / ₁₆	19 ³ / ₁₆	555
1540 SS	40, 50, 60	364TS	18¾	21	*12-1½	14	12	7	16 ¹ / ₈	¾	10½	27	32¼	28¾	24 ⁵ / ₈	24	24	25	17 ¹¹ / ₁₆	19 ³ / ₁₆	560
1550 SS	40, 50, 60, 75	365TS	21¼	23½	16-1½	16	13 ⁵ / ₈	8¼	16 ¹ / ₈	¾	11¾	27	34	31¾	23 ¹¹ / ₁₆	24	24	25	17 ¹¹ / ₁₆	19 ³ / ₁₆	715
1707 SS	10, 15, 20	256T	11¾	13½	8-7/8	8	7¾	4 ⁵ / ₈	14 ¹ / ₈	¾	6¾	22	23¾	21	21 ⁹ / ₁₆	21¾	24	23	16 ³ / ₁₆	16 ¹¹ / ₁₆	450
2020 SS	25, 30, 40	324TS	11¾	13½	8-7/8	8	7¾	4 ⁵ / ₈	16 ¹ / ₈	¾	6¾	27	28¾	24½	23 ¹¹ / ₁₆	24	24	25	17 ¹¹ / ₁₆	19 ³ / ₁₆	850
2025 SS	30, 40, 50, 60	364TS	14¼	16	*12-1	10	9¾	5¾	16 ¹ / ₈	¾	8	27	31¼	26	23 ¹¹ / ₁₆	24	24	25	17 ¹¹ / ₁₆	19 ³ / ₁₆	925
2050 SS	50, 60, 75	365TS	17	19	*12-1	12	10¾	6	16 ¹ / ₈	¾	9½	27	31¾	27¼	23 ¹¹ / ₁₆	24	24	25	17 ¹¹ / ₁₆	19 ³ / ₁₆	1050

*Bolt holes in flange are on center line.

► Spencer may make improvements and dimensional changes to equipment designs based on market trends and requirements.

For product selection assistance, please email marketing@spencer-air.com or visit our website at www.spencerturbine.com to locate the Spencer representative in your area.

Spencer manufactures and markets an extensive line of single and multistage centrifugal blowers and exhausters with cast or fabricated construction, regenerative blowers, central vacuum systems, mobile vacuum units, separators, tubing, fittings, vacuum accessories, and control panels.



The Spencer Turbine Company, 600 Day Hill Road, Windsor, CT 06095-4706

TEL 800-232-4321 ♦ 860-688-8361 ♦ FAX 860-688-0098 ♦ www.spencerturbine.com

