

VS HIGH PRESSURE

HIGH PRESSURE BULK STORAGE

Chart's VS High Pressure Bulk Stations are engineered for superior performance in high pressure applications. To support these demands, the VS High Pressure Bulk Station comes standard with a larger pressure-building regulator and coil. For more demanding applications with higher withdrawal rates, a remote pressure-building system is available.

Advanced insulation technology provides longer holding times, and the continuing development of insulation systems has resulted in unsurpassed performance. Our Composite Super Insulation™ is a light-weight system offering superior performance compared to Perlite or Super-Insulation and is easier to maintain, offering longer product hold times.

The standard 500 psig (34.5 bar) tank is available in 1500 - 15,000 gallon (6,208 - 57,008 liters) models. Other sizes are available upon request.

PRODUCT ADVANTAGES

- All welded stainless steel piping modules
- Heavy duty bronze valves with extended bonnets
- Valve bonnet uniformity to reduce spare parts inventory
- Highest grade components for low to zero maintenance
- Separate pressure building and economizer regulators are standard on all 500 psig (27.6 and 34.5 barg) models
- High performance safety system with dual relief valves and rupture disks supplied as a standard
- Inner vessel designed and built to ASME Section VIII Division 1 code



VS HIGH PRESSURE

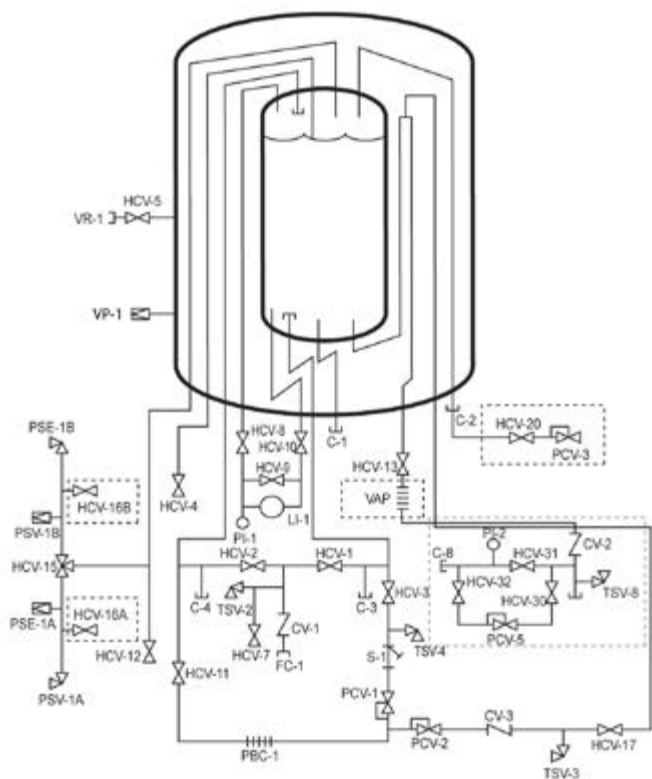
HIGH PRESSURE BULK STORAGE

Specifications

Model	Gross Capacity		Net Capacity		MAWP*		Flow Capacity**		Diameter		Height		Weight***		NER %/day in O ₂ /AR	NER %/day in N ₂
	Gal	Liters	Gal	Liters	(psig)	(bar)	SCFH	Nm ³ /hr	in	mm	in	mm	(lbs)	(kg)		
VS-1500SC	1,640	6,208	1,580	5,981	500	34.5	3,600	97	66	1,676	196	4,978	8,700	3,946	.35	.56
VS-3000SC	3,150	11,924	3,030	11,470	500	34.5	3,800	100	86	2,184	228	5,791	15,100	6,849	.25	.40
VS-6000SC	6,010	22,750	5,770	21,842	500	34.5	4,700	124	86	2,184	383	9,728	27,100	12,292	.15	.24
VS-9000SC	9,360	35,431	8,990	34,031	500	27.6	7,500	197	114	2,896	348	8,840	38,900	17,645	.10	.16
VS-11000SC	11,410	43,192	10,960	41,488	500	27.6	8,100	213	114	2,896	407	10,338	46,700	21,183	.10	.16
VS-13000SC	13,470	50,989	13,060	49,437	500	27.6	8,600	226	114	2,896	466	11,837	55,100	24,993	.10	.16
VS-15000SC	15,520	58,750	15,060	57,008	500	27.6	14,400	378	114	2,896	525	13,335	63,400	28,758	.10	.16

*MAWP - Maximum Allowable Working Pressure **Flow capacity rating down to a 20% contents level with a maximum fall off in tank operating pressure of 15 psi (1 bar)

***Weights are for ASME design (NER) = Nominal Evaporation Rate



Dashed lines indicate optional equipment.

NOMENCLATURE			
Tag	Description	Tag	Description
C-1	CONNECTION, AUX LIQUID	HCV-17	VALVE, ECONOMIZER
C-2	CONNECTION, AUX VAPOR	HCV-20	VALVE, ECONOMIZER VENT
C-3	CONNECTION, SECONDARY AUX LIQUID	HCV-30	VALVE, INLET HOUSELINE
C-4	CONNECTION, SECONDARY AUX VAPOR	HCV-31	VALVE, BYPASS HOUSELINE
C-8	CONNECTION, CUSTOMER HOUSELINE	VP-1	VACUUM PORT
CV-1	CHECK VALVE, FILL	HCV-32	VALVE, OUTLET HOUSELINE
CV-2	CHECK VALVE, HOUSELINE	LI-1	LEVEL INDICATOR, INNER VESSEL
CV-3	CHECK VALVE, ECONOMIZER	PBC-1	PRESSURE BUILDING COIL, INR VESSEL
FC-1	CONNECTION FILL	PCV-1	PRESSURE CONTROL VALVE, INR VESSEL
HCV-1	VALVE, BOTTOM FILL	PCV-2	PRESSURE CONTROL VALVE, ECONOMIZER
HCV-2	VALVE, TOP FILL	PCV-3	PRESSURE CONTROL VALVE, ECONO VENT
HCV-3	VALVE, PB INLET	PCV-5	PRESSURE CONTROL VALVE, HOUSELINE
HCV-4	VALVE, FULL TRYCOCK	PI-1	PRESSURE INDICATOR, INR VESSEL
HCV-5	VALVE, VACUUM GAUGE TUBE	PI-2	PRESSURE INDICATOR, HOUSELINE
HCV-7	VALVE, FILL LINE DRAIN	PSE-1A	PRESSURE SAFETY ELEMENT, INR VESSEL
HCV-8	VALVE, LI-1 VAPOR PHASE	PSE-1B	PRESSURE SAFETY ELEMENT, INR VESSEL
HCV-9	VALVE, LI-1 EQUALIZATION	PSE-3	PRESSURE SAFETY ELEMENT, OUTER VESSEL
HCV-10	VALVE, LI-1 LIQUID PHASE	PSV-1A	PRESSURE SAFETY VALVE, INR VESSEL
HCV-11	VALVE, PB OUTLET	PSV-1B	PRESSURE SAFETY VALVE, INR VESSEL
HCV-12	VALVE, VAPOR VENT	TSV-2	THERMAL SAFETY VALVE, FILL
HCV-13	VALVE, VAPORIZER INLET	TSV-3	THERMAL SAFETY VALVE, PB CIRCUIT
HCV-15	VALVE, SAFETY RELIEF SELECTOR	TSV-8	THERMAL SAFETY VALVE, HOUSELINE
HCV-16A	VALVE, TEST	VAP	VAPORIZER PRODUCT WITHDRAWAL
HCV-16B	VALVE, TEST	VR-1	VACUUM READOUT, OUTER VESSEL