

# HS SERIES

## HORIZONTAL BULK STORAGE



The HS Series Bulk Stations are engineered and built with the same quality you have come to expect from Chart. They have standard features along with pre-engineered options sure to satisfy all of your requirements. Chart's HS Series Bulk Stations are designed to ASME code and available in 175 and 250 psig (12 and 17 barg) as standard (other pressures available upon request).

Our composite insulation system gives you the competitive edge with high thermal performance and extended hold times, resulting in low life-cycle costs. In addition, the light weight design reduces your installation costs.

### PRODUCT ADVANTAGES

- Piping modules designed for ease-of-access to all operational control valves with stainless steel interconnecting piping minimizes the number of connections, reducing maintenance and cost of ownership
- Component selection to improve operational performance – combination pressure building/ economizer regulator for easy pressure adjustment and extended bonnet bronze control valves for ease of operation
- High performance safety system with dual relief valves and rupture disks supplied as a standard
- New, innovative vertical fin pressure building system improves performance, while reducing frost and ice build-up to further reduce your maintenance costs
- Backed by an industry-leading 5-year vacuum warranty
- Inner vessel designed and built to ASME Section VIII Division 1 code



Cooler By Design. ®

# HS SERIES

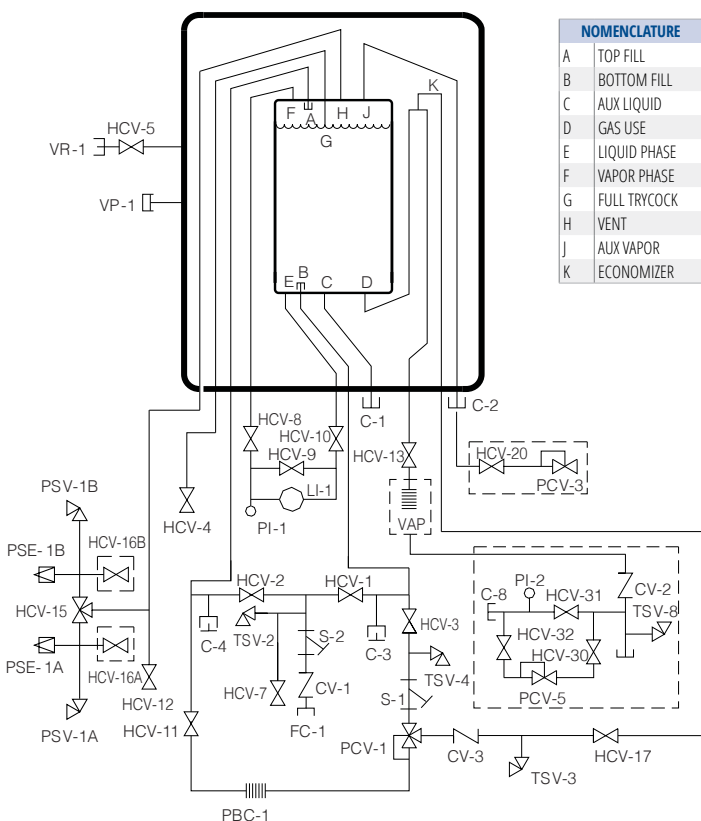
## HORIZONTAL BULK STORAGE

### Specifications

Model	Gross Capacity		Net Capacity		MAWP*		Width		Height		Length		Weight***		NER %/day	NER %/day
	Gal	Liters	Gal	Liters	(psig)	(bar)	in	mm	in	mm	in	mm	(lbs)	(kg)	in O <sub>2</sub> /AR	in N <sub>2</sub>
HS 1500SC-SC	1,649	6,208	1,580	5,981	250	17.2	68	1,728	80	2,032	201	5,105	6,800	3,084	.56	.90
HS 3000SC-SC	3,150	11,924	3,030	11,470	175 250	12.1 17.2	86	2,184	95	2,413	233	5,918	10,900 11,900	4,944 5,398	.32	.52
HS 6000SC-SC	6,010	22,750	5,770	21,842	175 250	12.1 17.2	86	2,184	95	2,413	386	9,804	20,400 22,000	9,253 9,979	.22	.35
HS 9000SC-SC	9,360	35,431	8,990	34,031	175 250	12.1 17.2	114	2,896	126	3,200	348	8,839	29,400 32,300	13,336 14,651	.15	.24
HS 11000SC-SC	11,400	43,192	10,960	41,488	175 250	12.1 17.2	114	2,896	126	3,200	408	10,363	35,300 38,800	16,012 17,599	.15	.24
HS 13000SC-SC	13,470	50,989	13,060	49,437	175 250	12.1 17.2	114	2,896	126	3,200	467	11,862	41,400 45,400	18,779 20,593	.15	.24
HS 15000SC-SC	15,520	58,750	15,060	57,008	175 250	12.1 17.2	114	2,896	126	3,200	528	13,411	47,700 52,300	21,636 23,723	.15	.24

\*MAWP - Maximum Allowable Working Pressure \*\*Flow capacity rating down to a 20% contents level with a maximum fall off in tank operating pressure of 15 psi (1 bar)

\*\*\*Weights are for ASME design (NER) = Nominal Evaporation Rate



NOMENCLATURE	
A	TOP FILL
B	BOTTOM FILL
C	AUX LIQUID
D	GAS USE
E	LIQUID PHASE
F	VAPOR PHASE
G	FULL TRYCOCK
H	VENT
J	AUX VAPOR
K	ECONOMIZER

NOMENCLATURE			
Tag	Description	Tag	Description
C-1	CONNECTION, AUX LIQUID	S-1	STRAINER, PRESSURE BUILDING
C-2	CONNECTION, AUX VAPOR	S-2	STRAINER, FILL
C-3	CONNECTION, SECONDARY AUX LIQUID	TSV-2	THERMAL SAFETY VALVE, FILL
C-4	CONNECTION, SECONDARY AUX VAPOR	TSV-3	THERMAL SAFETY VALVE, ECONOMIZER
CV-1	CHECK VALVE, FILL	TSV-4	THERMAL SAFETY VALVE, PB CIRCUIT
CV-3	CHECK VALVE, ECONOMIZER	VP-1	VACUUM PORT
FC-1	CONNECTION FILL	VR-1	VACUUM READOUT, OUTER VESSEL
HCV-1	VALVE, BOTTOM FILL	<b>NOTE: OPTIONAL VALVES (NOT SHOWN)</b>	
HCV-2	VALVE, TOP FILL		
HCV-3	VALVE, PB INLET		
HCV-4	VALVE, FULL TRYCOCK		
HCV-5	VALVE, VACUUM GAUGE TUBE	HCV-18	VALVE, LIQUID WITHDRAWAL (FROM C-1)
HCV-7	VALVE, FILL LINE DRAIN	HCV-19	VALVE, VAPOR RETURN (FROM C-2)
HCV-8	VALVE, LI-1 VAPOR PHASE	HCV-21	VALVE, SEC AUX LIQUID (FROM C-3)
HCV-9	VALVE, LI-1 EQUALIZATION	HCV-22	VALVE, SEC AUX VAPOR (FROM C-4)
HCV-10	VALVE, LI-1 LIQUID PHASE	<i>*dashed lines represent optional components</i>	
HCV-11	VALVE, PB OUTLET		
HCV-12	VALVE, VAPOR VENT	C-8	CONNECTION, CUSTOMER HOUSELINE
HCV-13	VALVE, PRODUCT SUPPLY	CV-2	CHECK VALVE, HOUSELINE
HCV-15	VALVE, SAFETY RELIEF SELECTOR	HCV-16A	VALVE, RELIEF LINE PURGE
HCV-17	VALVE, ECONOMIZER	HCV-16B	VALVE, RELIEF LINE PURGE
LI-1	LEVEL INDICATOR, INNER VESSEL	HCV-20	VALVE, ECONOMIZER VENT
PBC-1	PRESSURE BUILDING COIL, INR VESSEL	HCV-30	VALVE, INLET HOUSELINE
PCV-1	PRESSURE CONTROL VALVE	HCV-31	VALVE, BYPASS HOUSELINE
PI-1	PRESSURE INDICATOR, INR VESSEL	HCV-32	VALVE, OUTLET HOUSELINE
PSE-1A	PRESSURE SAFETY ELEMENT, INR VESSEL	PCV-3	PRESSURE CONTROL VALVE, ECONO VENT
PSE-1B	PRESSURE SAFETY ELEMENT, INR VESSEL	PCV-5	PRESSURE CONTROL VALVE, HOUSELINE
PSV-1A	PRESSURE SAFETY VALVE, INR VESSEL	PI-2	PRESSURE INDICATOR, HOUSELINE
PSV-1B	PRESSURE SAFETY VALVE, INR VESSEL	TSV-8	THERMAL SAFETY VALVE, HOUSELINE
		VAP	VAPORIZER, PRODUCT WITHDRAWAL

Chart Inc.  
U.S. : 1-800-400-4683  
Worldwide: 1-952-243-8800



© 2022 Chart Inc.  
PN 14388376  
www.chartindustries.com