

# DURA-CYL®

## PREMIUM LIQUID CYLINDERS - CASTER BASE

The Dura-Cyl® Liquid Cylinder series is a premium transportable liquid cylinder for cryogenic service. The patented internal support system design and quality construction makes the Dura-Cyl series the most efficient yet rugged cylinder on the market today. Along with our premium Liquid Cylinder Control Manifold (LCCM) regulator and our wide choice of caster base options, the Dura-Cyl series is also the most user-friendly cylinder available. Adding our industry-leading seven-year vacuum warranty and you get the lowest cost of ownership – making the Dura-Cyl cylinder the preferred choice in transportable liquid cylinders. See Footring specification sheet (PN 14338395).



*\*Chart liquid cylinders are designed to be used in a full for empty exchange program. They are not designed to be permanently installed in mobile applications.*



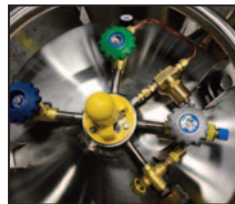
The Roto-Tel™ Liquid Level Gauge offers improved accuracy and expanded gauge ranges for better resolution.



LCCM Models have an integral mounted combination pressure control regulator with an isolation valve. (MP & HP models only)



The Dura-Cyl LP models are now equipped with the Roto-Tel liquid level system. The liquid globe valve with an extended stem allows less ice build-up on the handle for easier operation.



LP Models are offered with the LP PB Regulator Kit as standard equipment when ordered. Chart Parts will continue to stock the Kit for Retrofit options.



Some models available with either round or square caster bases for safe and easy mobility.

### PRODUCT HIGHLIGHTS

- Ideal for liquid nitrogen, oxygen, argon, CO<sub>2</sub> or nitrous oxide
- Different sizes, pressures, and features to meet your needs
- Stainless steel construction
- Thick, dent-resistant outer shell
- Patented durable, inner-vessel support system
- Large diameter handling ring with four supports
- Liquid Cylinder Control Manifold (LCCM), standard for MP, HP & VHP models
- Roto-Tel™ Liquid Level Gauge System
- Seven-year vacuum warranty
- PB Regulator Kit now standard on LP Models

# DURA-CYL®

## PREMIUM LIQUID CYLINDERS - CASTER BASE

### Caster Base Specifications

MODEL		120 L RB	230 L RB	230 L RB	230 L RB	230 L SB	230 L SB	230 L SB	265 L SB	265 L SB
	Pressure	LP	LP	MP	HP	LP	MP	HP	MP	HP
LCCM	Part Number	—	—	10602822	10616546	—	10496468	10496492	10510039	10512561
W/PB Reg Kit (1)	Part Number	21524496	21524498	—	—	21524499	—	—	—	—
W/22 PSI Dual RV Kit (4)	Part Number	—	—	—	21487737	—	21485253	21485252	—	—
<b>CAPACITY<sup>(2)(3)</sup></b>										
Liquid (Gross)	(liters)	120	240	240	240	240	240	240	276	276
Liquid (Net)	(liters)	110	230	230	230	230	230	230	265	265
Gas (N <sub>2</sub> )	ft <sup>3</sup> / Nm <sup>3</sup>	—	—	5,024/132	4,734/124	—	5,024/132	4,734/124	5,769/152	5,438/143
Gas (O <sub>2</sub> )	ft <sup>3</sup> / Nm <sup>3</sup>	—	—	6,244/164	5,930/156	—	6,244/164	5,930/156	7,186/189	6,811/179
Gas (Ar)	ft <sup>3</sup> / Nm <sup>3</sup>	—	—	6,073/160	5,763/151	—	6,073/160	5,763/151	6,982/183	6,634/174
Gas (CO <sub>2</sub> )	ft <sup>3</sup> / Nm <sup>3</sup>	—	—	—	4,614/121	—	—	4,614/121	—	5,305/139
Gas (N <sub>2</sub> O)	ft <sup>3</sup> / Nm <sup>3</sup>	—	—	—	4,378/115	—	—	4,378/115	—	5,034/132
<b>PERFORMANCE</b>										
NER (N <sub>2</sub> )	% per day	2.0	1.5	1.8	1.8	1.5	1.8	1.8	2	2
NER (O <sub>2</sub> - Ar)	% per day	1.4	1.0	1.2	1.2	1.0	1.2	1.2	1.4	1.4
NER (CO <sub>2</sub> - N <sub>2</sub> O)	% per day	—	—	—	0.5	—	—	0.5	—	0.5
Gas Flow (N <sub>2</sub> , O <sub>2</sub> , Ar)	SCFH/Nm <sup>3</sup> /hr	—	—	400 / 10.5	400 / 10.5	—	400 / 10.5	400 / 10.5	400 / 10.5	400 / 10.5
Gas Flow (CO <sub>2</sub> , N <sub>2</sub> O)	SCFH/Nm <sup>3</sup> /hr	—	—	—	110 / 2.9	—	—	110 / 2.9	—	110 / 2.9
<b>DIMENSIONS &amp; PRESSURE RATINGS</b>										
Relief Valve Setting	psig / barg	22 / 1.5	22 / 1.5	230 / 16	350 / 24	22 / 1.5	230 / 16	350 / 24	230 / 16	350 / 24
DOT/TC Rating		4L100 <sup>(4)</sup>	4L100	4L200	4L292	4L100	4L200	4L292	4L200	4L292
Diameter <sup>(5)</sup>	in / cm	20 / 50.8	26 / 66.0	26 / 66.0	26 / 66.0	26 / 66.0	26 / 66.0	26 / 66.0	26 / 66.0	26 / 66.0
Height <sup>(6)</sup>	in / cm	51/129.5	57.2/145.3	57.2/145.3	57.2/145.3	56.8/144.3	56.8/144.3	56.8/144.3	59.5/151.1	59.5/151.1
Tare Weight	lb / kg	177/80.3	296/134.3	311/141.1	367/166.5	325/147.4	340/154.2	395/179.2	418/189.6	418/189.6
Full Weight (N <sub>2</sub> )	lb / kg	377/171	697/316.2	675/306.1	710/322	726/329.3	704/319.3	738/334.7	812/368.3	812/368.3
(O <sub>2</sub> )	lb / kg	462/209.5	866/392.8	828/375.5	858/389.1	895/406	857/388.7	886/401.8	982/445.4	982/445.4
(Ar)	lb / kg	528/239.5	998/452.7	939/425.9	963/436.8	1027/465.8	968/439	991/449.5	1104/500.7	1104/500.7
(CO <sub>2</sub> )	lb / kg	—	—	—	895/405.9	—	—	923/418.6	—	1025/464.9

(1) Pressure building regulator standard on LP models. (2) Gas capacities at DOT4L limits. See manual P/N 10642912 for details.

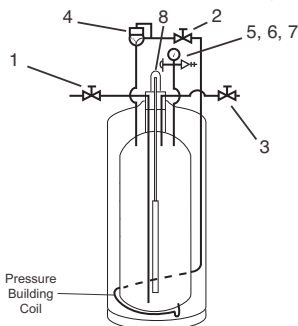
(3) Most of the Dura-Cyl models are available with permanently installed CGA fittings for medical applications. Contact Customer Service for details.

(4) Enables a cylinder to be used for either liquid or gas applications (5) Dimension of square caster bases: 27-3/4" W x 28-3/4" D. (6) Dimensions are measured from the floor to the top of the sight gauge protector.

RB = Round Base SB = Square Base

Note: All caster base models are available with stainless steel casters.

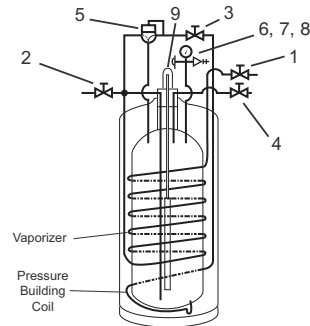
NER=Nominal Evaporation Rate



Model: LP - Low Pressure (Liquid Use Only)

#### Nomenclature

1. Fill / Liquid Valve
2. Pressure Building Valve
3. Vent Valve
4. Pressure Building Regulator
5. Pressure Gauge
6. Pressure Relief Valve
7. Rupture Disk
8. Liquid Level Gauge



Model: MP & HP - Medium & High Pressure (Liquid or Gas Use)

#### Nomenclature

1. Gas Use Valve
2. Fill / Liquid Valve
3. Pressure Building Valve
4. Vent Valve
5. LCCM Pressure Building Regulator
6. Pressure Gauge
7. Pressure Relief Valve
8. Rupture Disk
9. Liquid Level Gauge

Chart Inc.  
U.S.: 1-800-400-4683  
Worldwide: 1-952-243-8800



© 2021 Chart Inc.  
P/N 14336761  
www.chartindustries.com