

PSA Oxygen Concentrator System.....

Workhorse Profile Series



The Workhorse-23 Profile is a revolutionary oxygen concentrator system that provides 23 SCFH (11 LPM) of oxygen (including an oil-less compressor on-board) in the same space as the previous generation conventional two-bed 12 and 15 SCFH (6 and 7 LPM) systems.

The Workhorse-15 Profile oxygen system offers the same superior performance of the standard Workhorse model, but in less space. Workhorse-15 technology can be offered as a replacement for older, existing systems where space considerations are important. Workhorse utilizes Advanced Technology Fractionator® (ATF).

Features

- Fully integrated controls to ensure reliable oxygen production
- Rugged, environmentally tolerant design
- Compact and lightweight for maximum design flexibility
- Constant delivery pressure
- Optional oxygen concentration monitor
- Eliminates the need for an external product tank
- Low operating cost

Typical Applications

Manufacturing

- Jewelry/Brazing/Soldering

Artistic

- Glass Work/Blowing

Medical

- Hospital Systems

Environmental

- Ozone (Generator) Feed Gas
- Environmental Remediation
- Waste/Water Treatment

Additional

- Fish Farming
- Cosmetic

Specifications

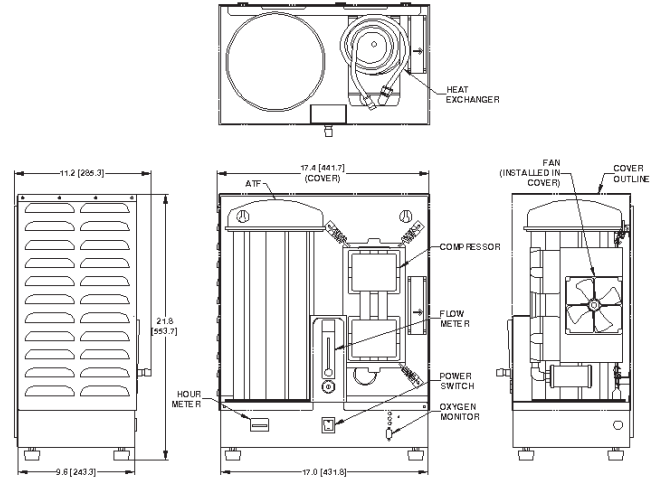
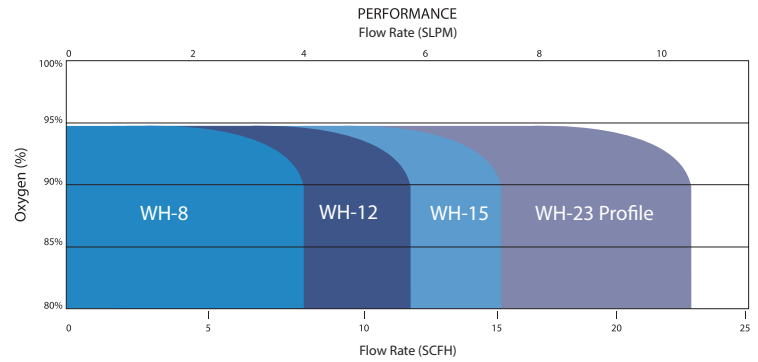
	Workhorse-15	Workhorse-23
Product Characteristics		
Performance Data		
Product Flow ¹	7 LPM (15 SCFH)	11 LPM (23 SCFH)
Oxygen Delivery Pressure	7 psig (48 kPa)	7 psig (48 kPa)
Product Concentration (nominal)	90-95%	90-95%
Product Dew Point	-100°F (-73°C)	-100°F (-73°C)
Dimensions (W x D x H) (nominal)	17 x 11 x 22 in (43 x 28 x 56 cm)	17 x 11 x 22 in (43 x 28 x 56 cm)
Weight	67 lb (30 kg) 68 lb (31 kg) (with oxygen concentration monitor)	67 lb (30 kg) 68 lb (31 kg) (with oxygen concentration monitor)
Physical Connections		
Product Gas Outlet	1/8" FNPT	1/8" FNPT
Ambient Operating Conditions	Locate the oxygen concentrator system in a well-ventilated area that is protected from weather elements and remains between 40°F (4°C) and 130°F (54°C) inside room or operating enclosure; 0°F (-18°C) and 140°F (60°C) in storage	
Control Power Requirements (Single Phase)	120 V ~ ±10%, 60 Hz or 208-240 V ~ ±10%, 60 Hz or 220-240 V ~ ±10%, 50 Hz	
Typical Power Consumption	Approximately 450 W	Approximately 600 W

¹ LPM (Liters per minute) gas measured at 1 atmosphere and 21°C / SCF (Standard cubic foot) gas measured at 1 atmosphere and 70°F

The ATF Advantage

ATF oxygen modules incorporate proven pressure swing adsorption (PSA) principles into a unique patented design, which allows these systems to be compact, efficient, rugged, and lower in cost. The ATF module offers unparalleled design flexibility and enables applications where on-site/on-board oxygen generation was previously impractical.

A patented single rotary distribution valve built into the ATF module is continuously rotated at low speed by a small motor. The valve is maintenance free, self-cleaning, insensitive to contamination, and invulnerable to wear. It sequentially directs the flow of compressed air to a group of four sieve beds (adsorption), while at the same time another four beds are purged into the atmosphere through the valve (desorption). The remaining four of the twelve beds are interconnected through the valve to equalize pressure as the sieve beds sequentially transition between adsorption and desorption. The small amplitude pressure swings generated by the ATF's twelve sieve beds eliminate loud noise pulses, eliminate the need for a pressure regulator, and reduce compressor wear.



Ordering Information

Note: All dimensions are nominal.

Model	Part Number	Description
Workhorse-15	5769-SEQ	120 V ~ ±10%, 60 Hz
	5785-SEQ	208-240 V ~ ±10%, 60 Hz
	5777-SEQ	220-240 V ~ ±10%, 50 Hz
	5769-1-SEQ	With oxygen concentration monitor (LED indicator), 120 V ~ ±10%, 60 Hz
	5785-1-SEQ	With oxygen concentration monitor (LED indicator), 208-240 V ~ ±10%, 60 Hz
	5777-1-SEQ	With oxygen concentration monitor (LED indicator), 208-240 V ~ ±10%, 50 Hz
Workhorse-23	5755-SEQ	120 V ~ ±10%, 60 Hz
	5759-SEQ	208-240 V ~ ±10%, 60 Hz
	5763-SEQ	220-240 V ~ ±10%, 50 Hz
	5755-1-SEQ	With oxygen concentration monitor (LED indicator), 120 V ~ ±10%, 60 Hz
	5759-1-SEQ	With oxygen concentration monitor (LED indicator), 208-240 V ~ ±10%, 60 Hz
	5763-1-SEQ	With oxygen concentration monitor (LED indicator), 208-240 V ~ ±10%, 50 Hz

Shipping Information	Workhorse-15	Workhorse-23
Class	92.5	92.5
Commodity Classification Number	8421.39.8040	8421.39.8040
Dimensions (W x D x H)	22 x 14 x 25 in (56 x 36 x 64 cm)	22 x 14 x 25 in (56 x 36 x 64 cm)
Gross Weight	84 lb (38 kg)	84 lb (38 kg)

Warranty: 1 Year Parts and Factory Labor*

* An unprotected or inadequately ventilated environment, or improper control power may cause damage to the oxygen generator not covered under warranty.

All performance ratings based on an ambient temperature up to 100°F (38°C), up to 1,000 feet elevation, and 80% relative humidity.

Copyright (C) 2014 Chart Industries
 CAIRE Inc./Chart SeQual Technologies Inc./Chart Inc./AirSep Corp. reserves the right to discontinue its products, or change the prices, materials, equipment, quality, descriptions, specifications and/or processes to its products at any time without prior notice and with no further obligation or consequence.
 All rights not expressly stated herein are reserved by us, as applicable.



A Chart Industries Company
 260 Creekside Drive
 Buffalo, NY 14228-2075 U.S.A.

Tel: 800-482-2473 • (770) 721-7759 • Fax: (770) 721-7758
 www.airsep.com • customerservice.usa@chartindustries.com

ML-IND0029 C