



Bulk CO<sub>2</sub> Systems

# Technical Service Bulletin

**Component Modification**

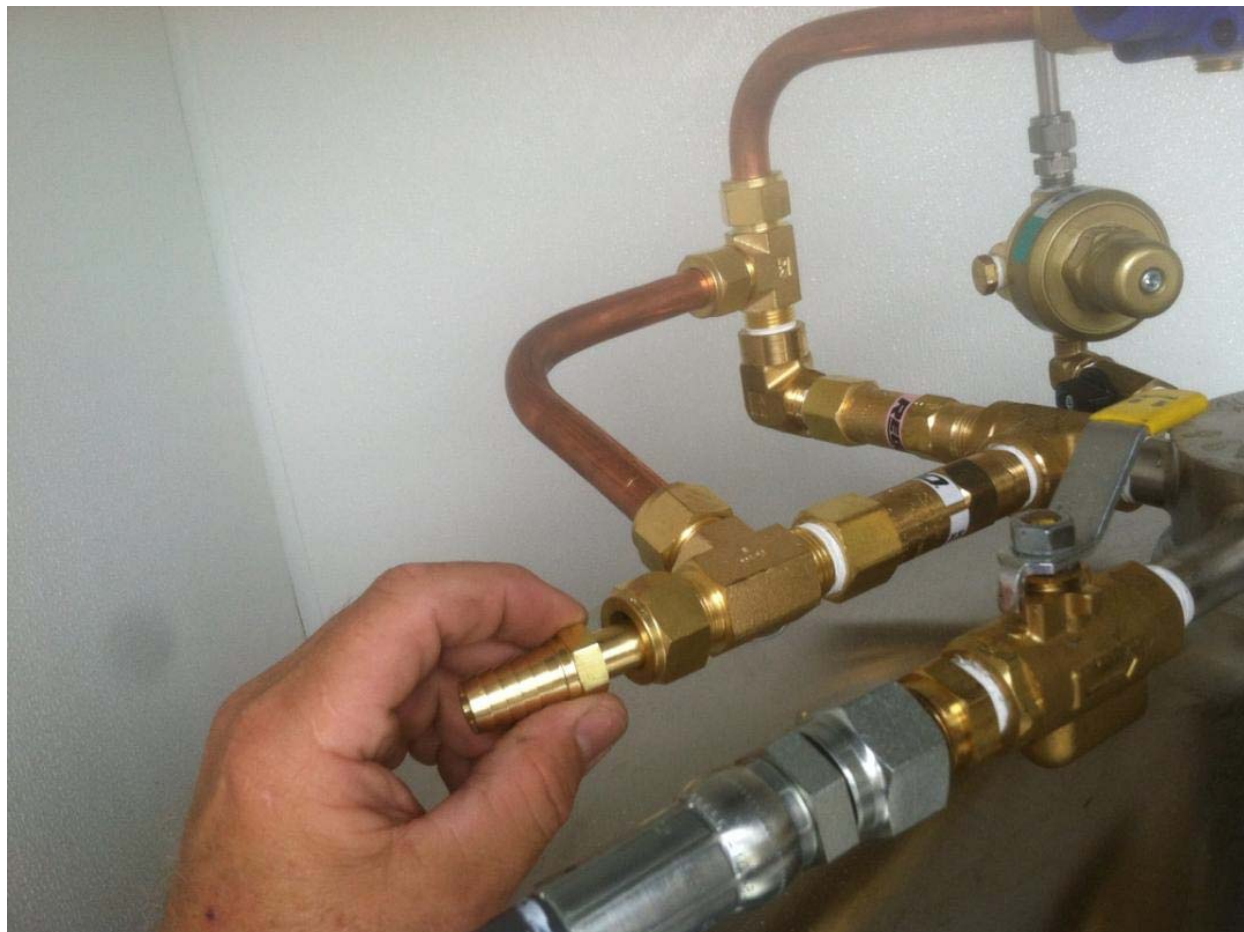
TSB-BEV-1003

**Date:** July 17, 2015

**Subject:** McDonald's Carbo-Max™ 1000 Bulk CO<sub>2</sub> System vent line fitting kit.

**Products Affected:** McDonald's Carbo-Max™ 1000 Bulk CO<sub>2</sub> System

**Description:** The vent line tee fitting shown below for the Carbo-Max 1000 uses a 5/8" compression fitting to connect a barb that would allow the vent line to be connected to the tank. The existing McDonald's vent line fitting kit used a 1/2" barb fitting so an adapter was needed to couple the 1/2" fitting to the 5/8" compression fitting on the vent line tee.



**Resolution:** An adapter fitting was added to the existing McDonald's vent line fitting kit (P/N 20596403) to accommodate the Carbo-Max 1000 tank. Below is an exploded view representation of the adapter with the existing McDonald's vent line fitting kit.



**Contact:** If you have concerns or questions relative to this action, please contact your Chart Technical Service Representative at 1-800-247-4446. Thank you for depending on Chart for high product quality and service.