

# EXPLOSION PROOF

ELECTRIC VAPORIZERS

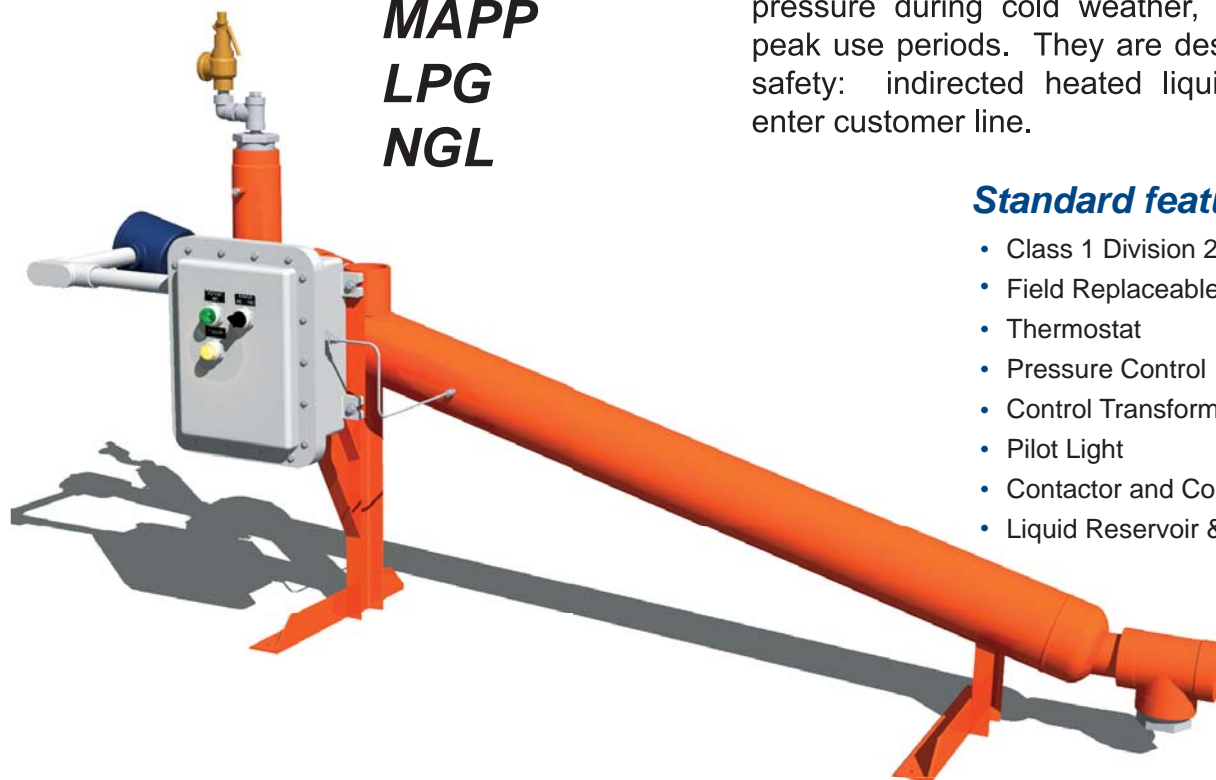


Product Datasheet **2.1**

**PROPANE**  
**PROPYLENE**  
**MAPP**  
**LPG**  
**NGL**

## Thermax Automatic Electric LP/MAPP Gas Vaporizers

operate on the principle of maintaining tank pressure during cold weather, or during peak use periods. They are designed for safety: indirected heated liquid cannot enter customer line.



### Standard features

- Class 1 Division 2 Grp C&D Rating
- Field Replaceable Heater
- Thermostat
- Pressure Control
- Control Transformer
- Pilot Light
- Contactor and Controller
- Liquid Reservoir & Filler Cap

Power Ratings		Amp Draw		Propylene/Propane Rating		Shipping Dimensions	Weight
Model	kW	240V	480V	gal/Hr	lb/hr	L x W x H (feet)	Lbs.
L16-6	6	15	8	25	100	5 x 2 x 3	275
L16-9	9	22	11	37	150	5 x 2 x 3	275
L16-12	12	29	15	48	200	5 x 2 x 3	275
L265-18	18	43	22	75	300	9 x 3 x 4 1/2	450
L265-25	25	60	30	100	400	9 x 3 x 4 1/2	450

Other sizes, ratings, process fluids and voltages available

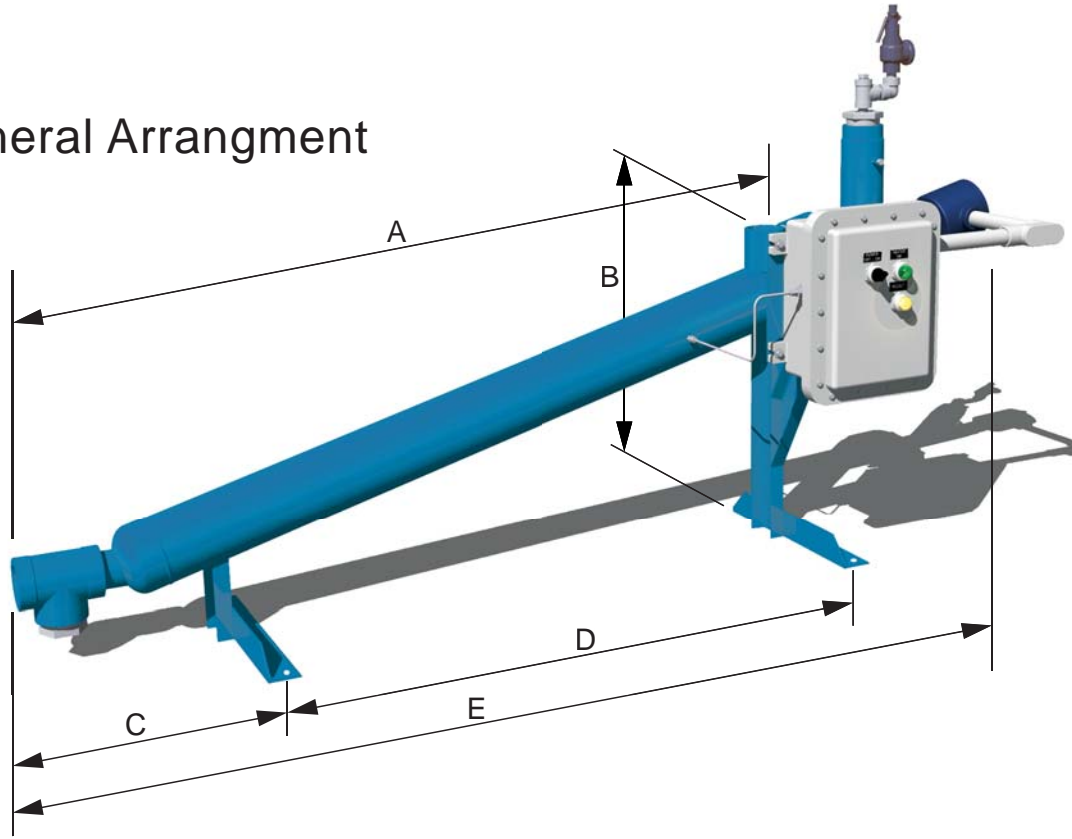


Innovation. Experience. Performance.®

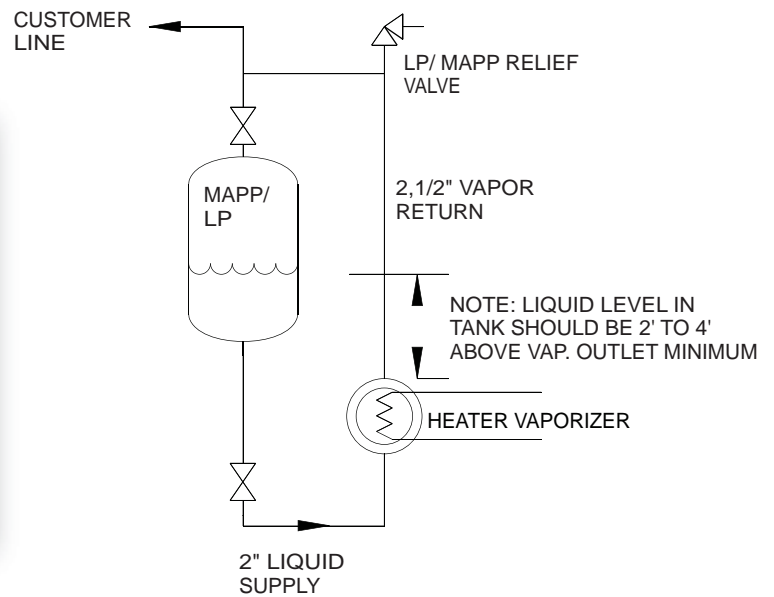
# EXPLOSION PROOF

## ELECTRIC VAPORIZERS

### General Arrangement



### SYSTEM FLOW DIAGRAM



Approx Dimensions (inches)		
	Model L16	Model L265
A	53-3/8	78-1/4
B	25-3/4	32-3/8
C	16	15-3/4
D	29	60-1/2
E	72	100-1/2
F	41-3/4	53-1/2
G	6	6
H	18	23-1/2

All tables shown on this Datasheet are intended as a guide that reflect our experience on these models. Please call Thermax Inc. for guidance on specific applications. Actual performance may vary. This product and/or data was designed and/or developed by Thermax Inc. and shall not be used in any way injurious to the interests of Thermax Inc. Vortex-Flo™ is a Thermax Inc. trademark.