

# PSA Nitrogen Generator

# N2-AS-L



AirSep Alpha Series Nitrogen Generators produce from 450 to 44,671 cubic feet of nitrogen per hour at 99.5% nitrogen concentration. When electricity and an adequate source of compressed air is supplied, these dependable machines can provide nitrogen for practically any application and at concentrations up to 99.999% (10 PPM O<sub>2</sub>).

## Features

- Produces nitrogen from an independent compressed air source
- Microprocessor controlled
- Low operating cost with energy efficient programming control options
- Automatic and unattended operation
- Easy to install and maintain
- NEMA 4X Touchscreen control panel with integrated nitrogen concentration monitor

## Typical Applications

### Manufacturing

- Cutting/Brazing/Soldering
- Heat Treatment
- High Pressure Plastic Injection Molding

### Oil & Gas/Power Generation

- Onshore/Offshore Exploration
- Mechanical Gas Seal Inerting
- Enhanced Oil Recovery (EOR)

### Food & Beverage

- Modified Atmosphere Packaging (MAP)
- Nitrogen CO<sub>2</sub> Gas Mix Beer Drafting
- Controlled Atmosphere(CA)/Fruit Storage
- Wine Bottle Capping

### Automotive

- Tire Inflation

### Mining

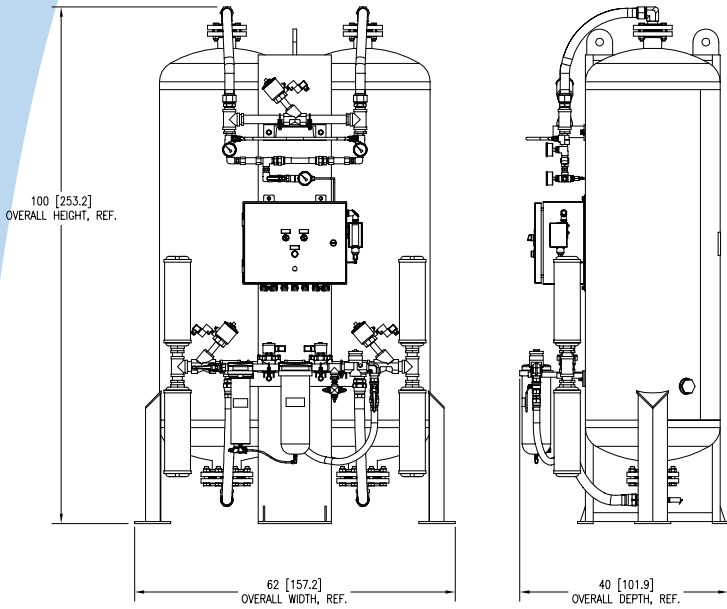
- Control of Lower Explosive Limits (LEL)

## Specifications

Product Flow	7,020 SCFH (184.5 Nm <sup>3</sup> /hr) <sup>1</sup>
Product Pressure	85 – 90 psig (586 – 621 kPa or 5.8 – 6.2 barg) <sup>1</sup>
Product Concentration	99.5%
Product Dew Point	-100°F (-73°C)
Dimensions (W x D x H) (Nominal)	62 x 40 x 100 in (158 x 102 x 254 cm)
Weight	3,400 lb (1,542 kg)
Physical Connections <sup>2</sup>	
Compressed Air Inlet	2" FNPT
Product Gas Outlet	1½" FNPT
Ambient Operating Conditions	Locate the nitrogen generator in a well-ventilated area that is protected from weather elements and remains between 40°F (4°C) and 104°F (40°C)
Feed Air Requirements	Flow Rate: 333 SCFM (8.75 Nm <sup>3</sup> /min) <sup>1</sup> Clean and Dry "Plant Air" (Class 5.6.4 per ISO 8573.1) Pressure: 109 psig (752 kPa) minimum Temperature: 109°F (43°C) maximum Dew Point: 40°F (4.4°C) maximum
Control Power Requirements (Single Phase)	120 V ~ ±10%, 50/60 Hz, 3.0 A or 220 V ~ ±10%, 50/60 Hz, 1.0 A
Certifications and Approvals	ASME, CSA, UL
<b>660 Gallon Nitrogen Receiver</b>	
Dimensions (Dia. x H)	49 x 129 in (125 x 328 cm)
Weight	1,300 lb (590 kg)

<sup>1</sup> SCF (Standard cubic foot) gas measured at 1 atmosphere and 70°F / Nm<sup>3</sup> (Normal cubic meter) gas measured at 1 atmosphere and 0°C

<sup>2</sup> Hose and applicable adapters included with optional Factory-supplied accessory kits.



Note: All dimensions are nominal.

### Model N2-AS-L Nitrogen Generator Feed Air Requirement\*

Nitrogen Concentration%	Feed Air Usage**	N2-AS-L
99.99		3,446
99.95		4,581
99.9		5,212
99.5	333 SCFM	7,020
99		7,944
98		10,005
97		11,518
96		13,031
95		14,292

\*\*Time weighted average. Contact Factory for air compressor sizing assistance.

\* SCF (Standard cubic foot) gas measured at 1 atmosphere and 70°F

## Ordering Information

Model	Part Number	Description
N2-AS-L	NGAS107-7	With HMI NEMA 4X Touchscreen and nitrogen concentration monitor, 120 V ~ ±10%, 50/60 Hz <sup>1</sup>
	NGAS107-8	With HMI NEMA 4X Touchscreen and nitrogen concentration monitor, 220 V ~ ±10%, 50/60 Hz <sup>1</sup>
Required Accessories	TA079-1	660 Gallon Nitrogen Receiver
Optional Accessories	KI600-X	Accessory Kit (flow control manifold)
Interconnecting hoses available. Contact Factory for details.		

Shipping Information	N2-AS-L	660 Gallon Nitrogen Receiver
Class	92.5	70
Commodity Classification Number	8421.39.8040	7311.00.0000
Dimensions (W x D x H)	66 x 105 x 50 in (168 x 267 x 127 cm) with Accessory Kit(s) and Filter with Pallet 67 x 106 x 56 in (170 x 269 x 142 cm) with Accessory Kit(s) and Filter with Pallet, Crated	44 x 132 x 50 in (112 x 335 x 127 cm)
Gross Weight	3,750 lb (1,701 kg) with Accessory Kit(s) and Filter with Pallet 4,135 lb (1,876 kg) with Accessory Kit(s) and Filter with Pallet, Crated	1,500 lb (680 kg)

### Warranty: 1 Year Parts and Factory Labor\*\*\*

\*\*\* An unprotected or inadequately ventilated environment, or improper control power may cause damage to the nitrogen generator not covered under warranty.

<sup>1</sup> Specify nitrogen flow and pressure at time of order.

All performance ratings based on an ambient temperature up to 100°F (38°C), up to 1,000 feet elevation, and 80% relative humidity.



© 2018 AirSep Corporation. All Rights Reserved.  
AirSep reserves the right to discontinue its products, or change the prices, materials, equipment, quality, descriptions, specifications and/or processes to its products at any time without prior notice and with no further obligation or consequence. Any rights expressly stated herein are reserved by us, as applicable.



260 Creekside Drive  
Buffalo, NY 14228-2075 U.S.A.  
Tel: (716) 691-0202 ■ Fax: (716) 691-1255  
www.airsepcpd.com ■ info@airsep.com  
ML-IND0043 A