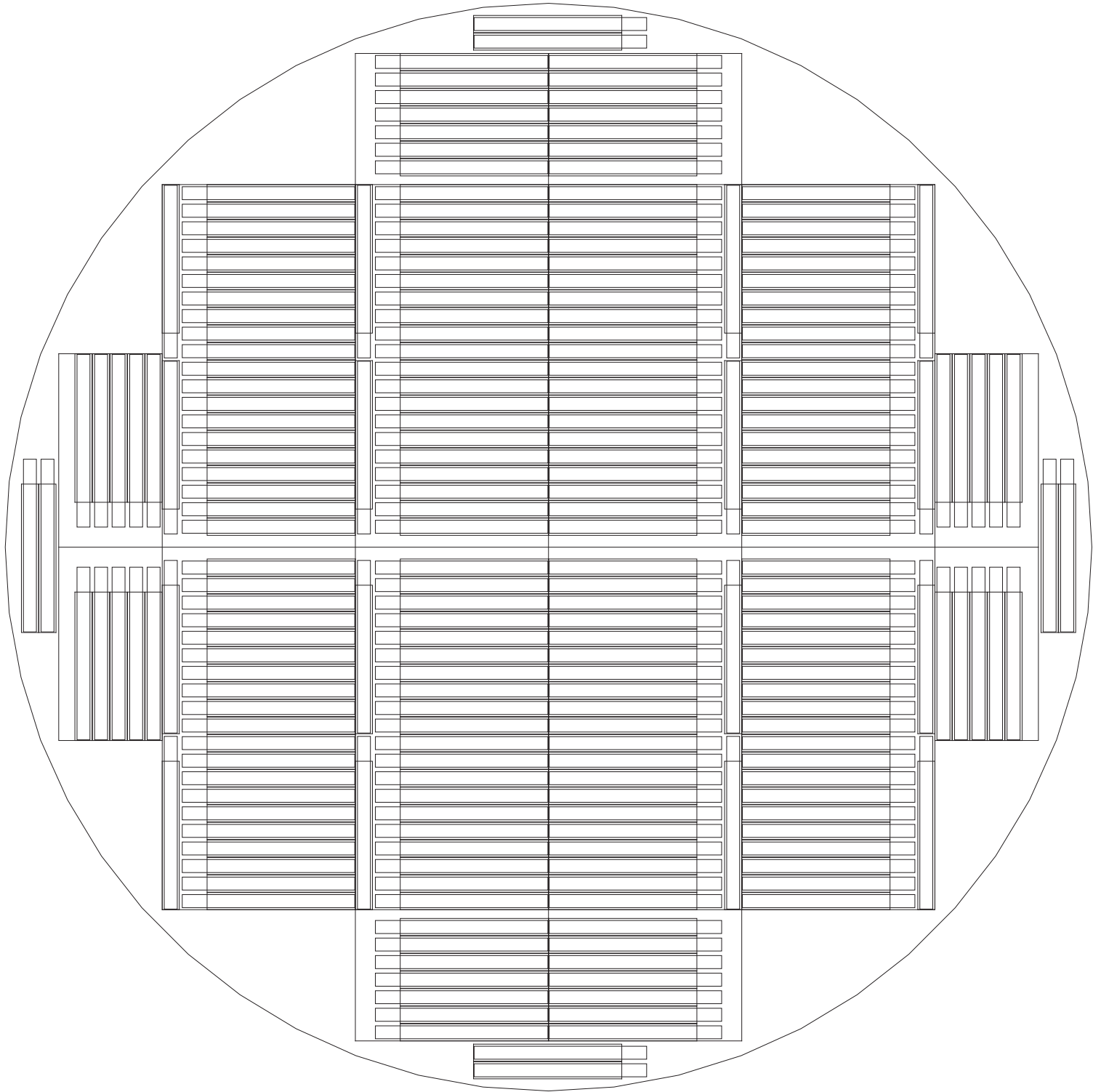
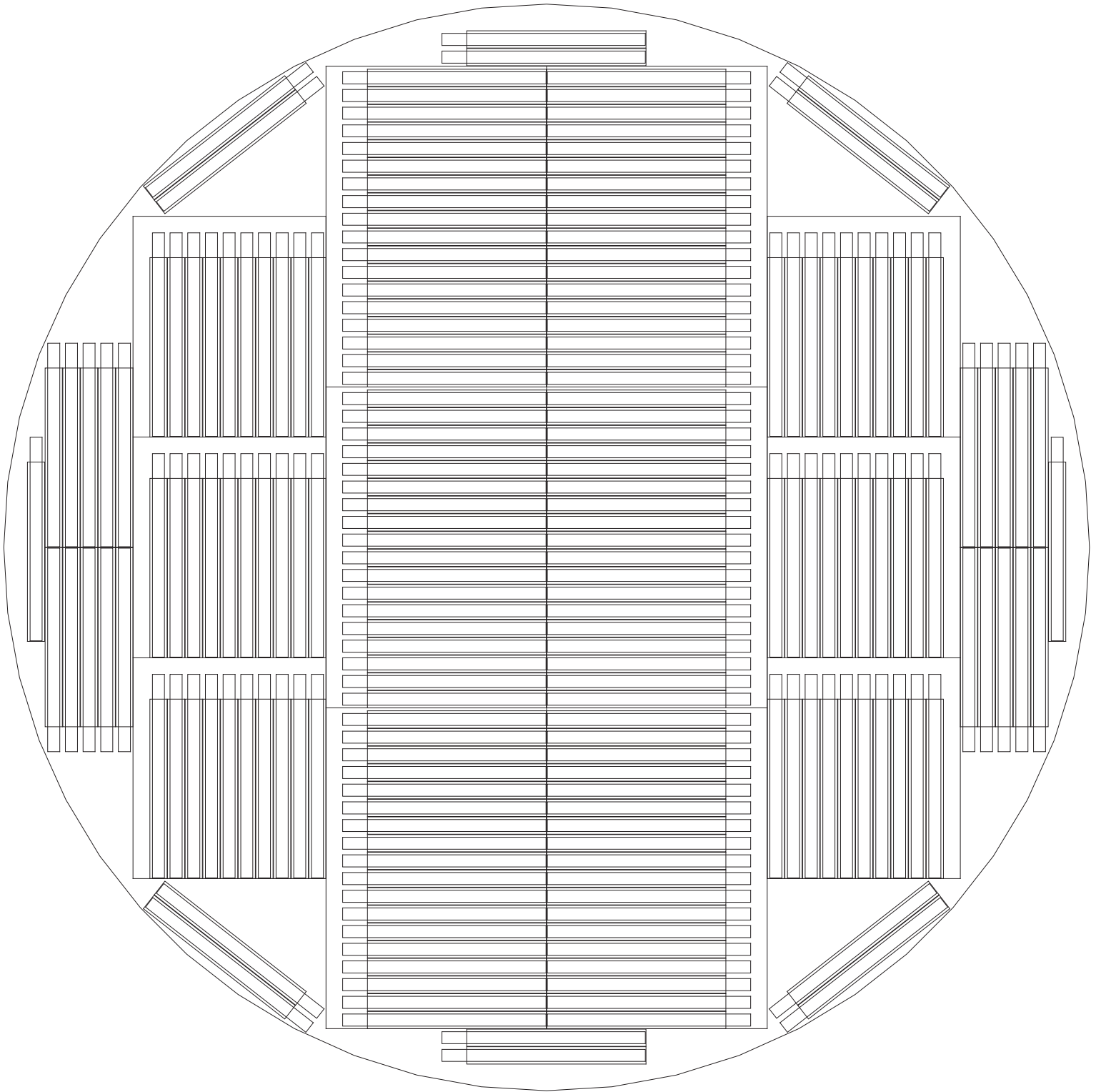


MVE 1839
BAXTER 4R9951 LAYOUT



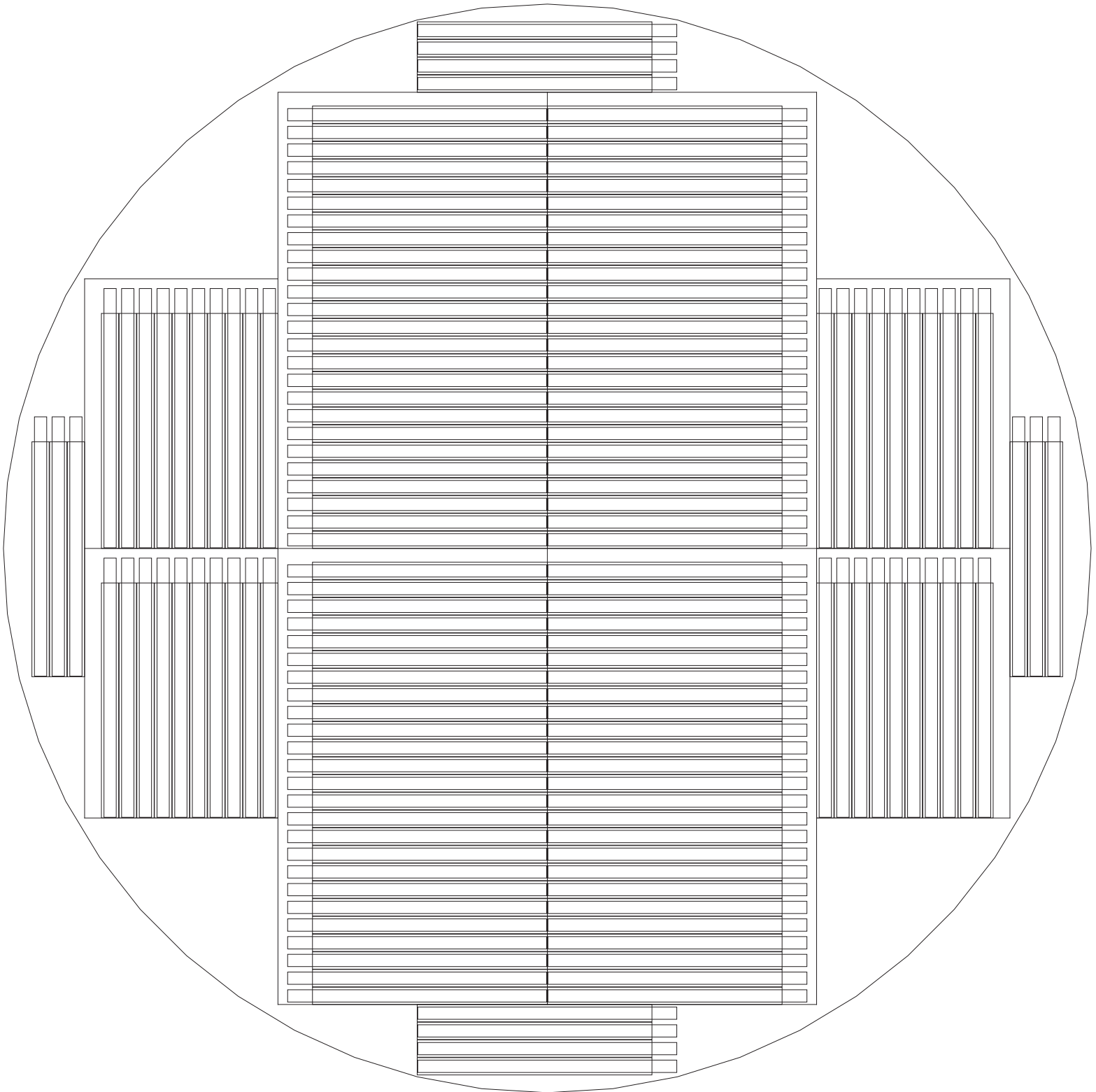
1 DIVIDER
232 FRAMES
1392 CASSETTES IN 6 HIGH FRAMES
1856 CASSETTES IN 8 HIGH FRAMES

MVE 1839
BAXTER 4R9953 LAYOUT



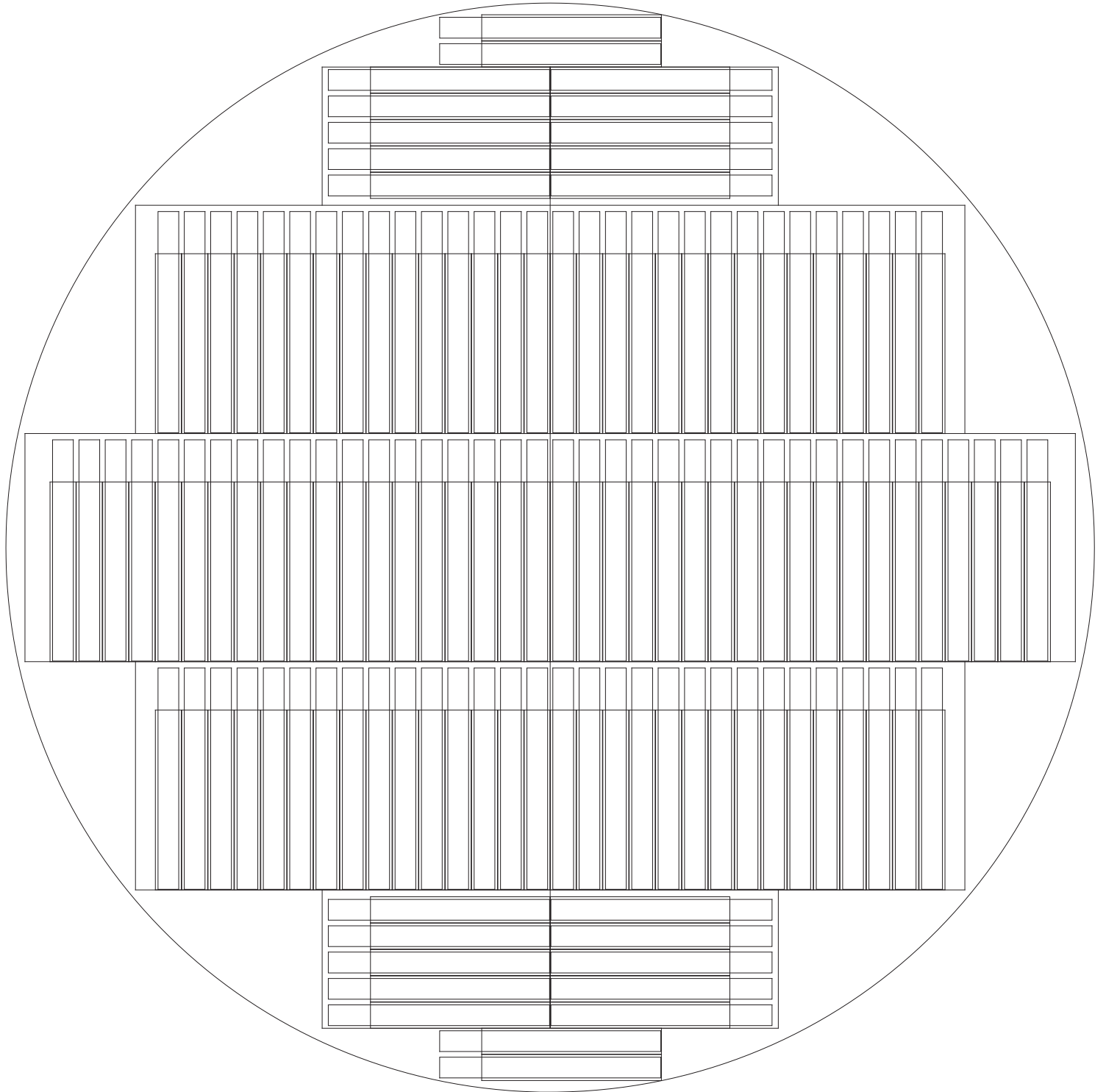
1 DIVIDER
202 FRAMES
808 CASSETTES IN 4 HIGH FRAMES
1010 CASSETTES IN 5 HIGH FRAMES

MVE 1839
BAXTER 4R9955 LAYOUT



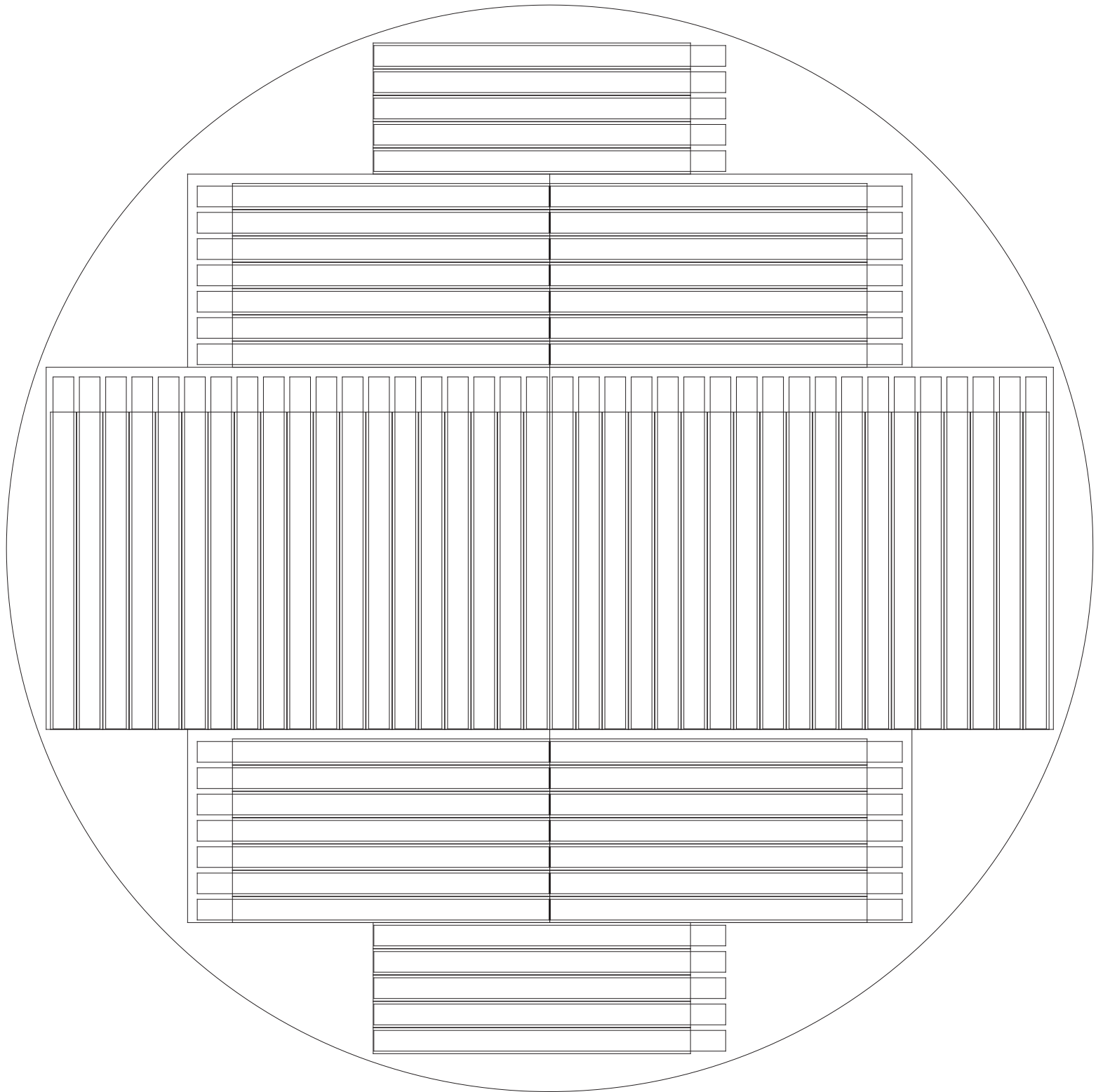
1 DIVIDER
154 FRAMES
616 CASSETTES IN 4 HIGH FRAMES
770 CASSETTES IN 5 HIGH FRAMES

MVE 1839
GAMBRO DF200 LAYOUT



1 DIVIDER
122 FRAMES
488 CASSETTES IN 4 HIGH FRAMES
732 CASSETTES IN 6 HIGH FRAMES
854 CASSETTES IN 7 HIGH FRAMES

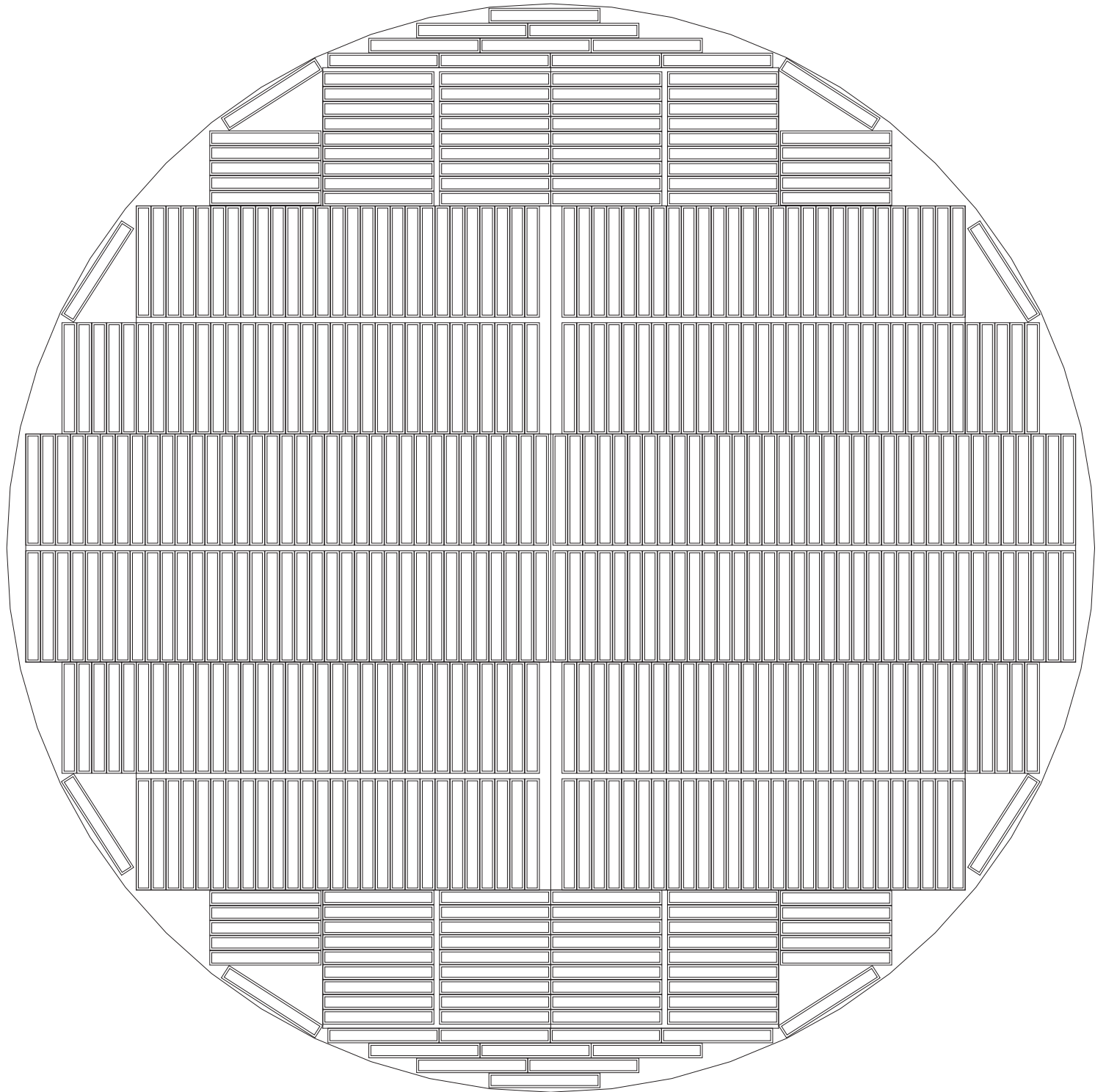
MVE 1839
GAMBRO DF700 LAYOUT



1 DIVIDER
76 FRAMES

304 CASSETTES IN 4 HIGH FRAMES
456 CASSETTES IN 6 HIGH FRAMES
532 CASSETTES IN 7 HIGH FRAMES

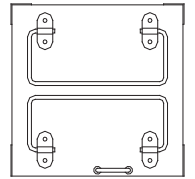
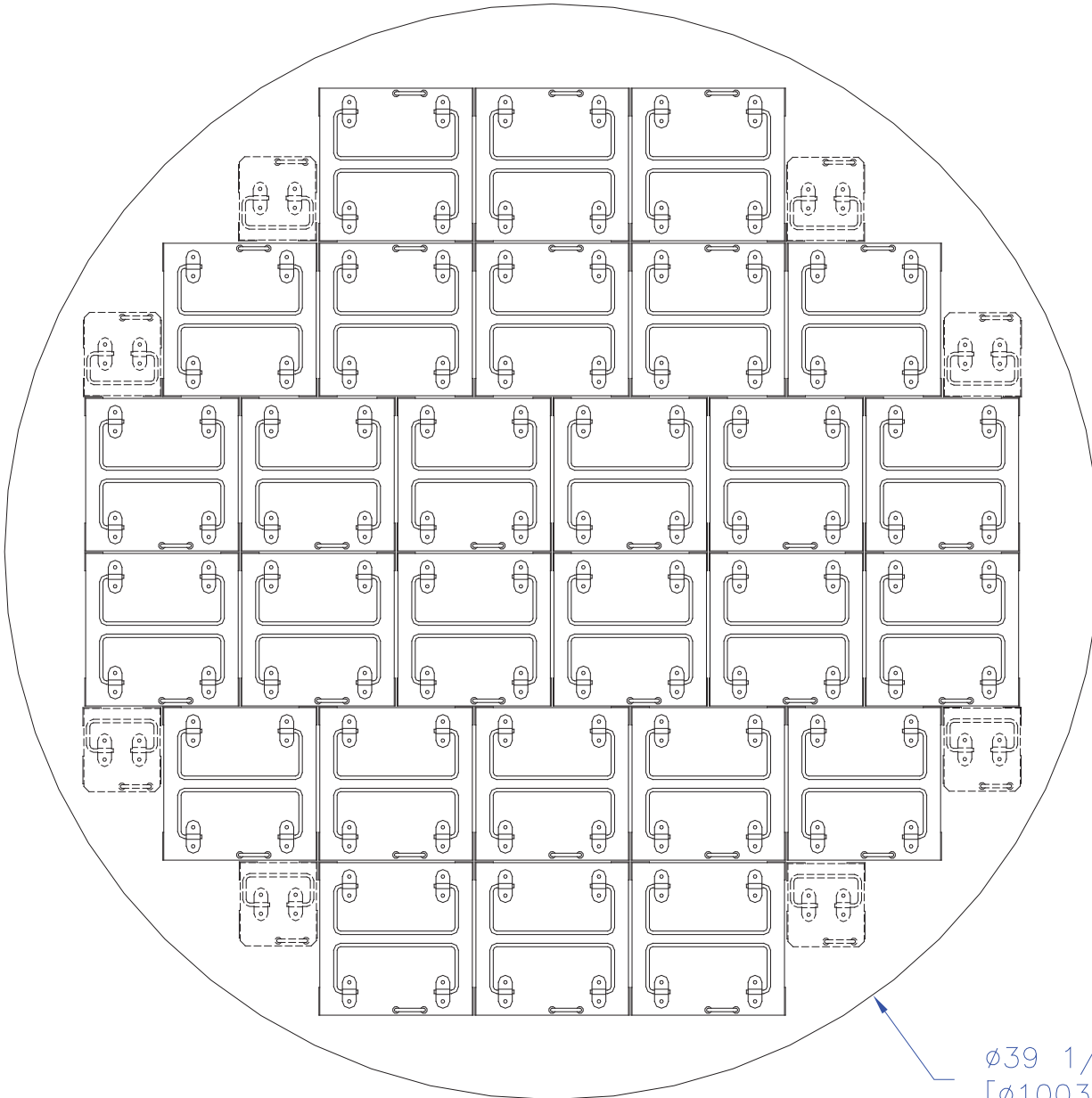
MVE 1841
MEDSEP LAYOUT



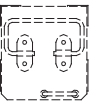
1 DIVIDER P/N 10581110
496 FRAMES

LIQUID STORAGE 8 PLC FRAME 3968 CANISTERS
VAPOR STORAGE 7 PLC FRAME 3472 CANISTERS
VAPOR PLATFORM P/N 10544909

MVE 1839 SQUARE RACK LAYOUT



STANDARD



OPTIONAL

Ø39 1/2"
[Ø1003mm]

28 LARGE RACKS
8 MINI RACKS (OPTIONAL)
39,000 VIALS IN 13-2 RACKS
45,000 VIALS IN 15-2 RACKS