

Having trouble viewing this email? [Click here](#)

Hi, just a reminder that you're receiving this email because you have expressed an interest in Chart Industries. Don't forget to add amy.mcdurmon@chartindustries.com to your address book so we'll be sure to land in your inbox! Visit our website to view MVE Chart Tech Tips:
http://www.chartbiomed.com/Literature_Resources/Tech_Tips.aspx

You may [unsubscribe](#) if you no longer wish to receive our emails.



MVE Chart Tech Tips

In This Issue

[Product Information](#)
[Helpful Hints / FAQs](#)
[Accessories](#)

PDF Version

To view Tech Tips in PDF,
[click here](#).

Join Our List

[Join Our Mailing List!](#)

March 2015

PRODUCT INFORMATION

Updated TEC Connect Program (Ver. 1.1.0.0)

An updated version of the TEC Connect program is available [here](#).

Additions/Changes:

- Added Settings Manager functionality for Vario Pro controller
- Improved functionality with the TEC 2000
- Added Excel 2007, 2010 and 2013 compatibility to the download function. Graph will be automatically generated for data when downloaded.
- Added Fill Start, Fill Stop to be compatible with TEC 2000 and TEC 3000
- Added Alarm Mute button to be compatible with all models
- Added Alarm Monitoring for the TEC 2000/3000
- Added Driver Installation Feature to the File menu

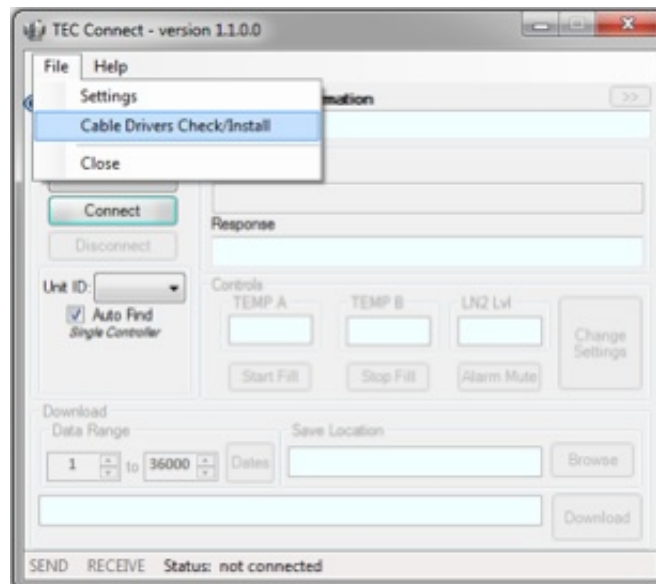
To update to the new version, follow the steps below:

1. Before downloading version 1.1.0.0 of TEC Connect, make sure to uninstall any previous versions of TEC Connect. (If using Windows 7, go to **Control Panel > Programs > Programs and Features**. Right click the **TEC Connect** program and select **Uninstall**.)
2. Once any old versions of TEC Connect have been uninstalled, download the TEC Connect Software package from [here](#).



3. Extract all files from the downloaded folder.
4. Run the **TEC_Connect_Setup** application.
5. TEC Connect should open after installation. If not, navigate to the program in the file browser and open it.

Note: The TEC COM cable drivers are downloaded along with the TEC Connect program, but if the cable drivers have been installed previously, there is no need to reinstall the drivers. If this is the first time TEC Connect is being installed on a computer, the TEC COM cable drivers will need to be installed also. The TEC Connect program can check if the cable drivers are installed by selecting **File > Cable Drivers Check/Install**. The cable drivers can also be installed manually using the **_install.bat** file in the TEC COM Cable Drivers folder.



CryoCart Replacement Casters

Chart offers replacement casters for the CryoCart. The design of the CryoCarts have changed over the years, so it is important to obtain the part number and serial number of the CryoCart in order to select the proper replacement casters, as the casters between the two models are not interchangeable. Two of each type of caster listed will outfit one CryoCart. Part numbers 14448703 and W3170LT are the current model CryoCarts. The replacement casters for these models are:

- PN 46-912042 - 4" non-pneumatic, swivel caster with brake
- PN 46-912043 - 4" non-pneumatic, non-swivel caster

Part number 12966911 is the previous model CryoCart. The standard casters on this model were pneumatic:

PN 12967219 - 6" pneumatic, swivel caster with brake

PN 12967227 - 6" pneumatic, non-swivel caster

Alternatively, there are non-pneumatic casters available for this model, listed below:

PN 3110599 - 5" non-pneumatic, swivel caster with brake

PN 3110609 - 5" non-pneumatic, non-swivel caster

HELPFUL HINTS / FAQ's

Q: How can I replace the lid liner on an XLC 1211 or MVE 1223 model freezer?

A: The Lid liner originally used on the XLC1211 and MVE1223 is obsolete. The liner with a cork insert was replaced by a cork attached to a mounting plate. If a freezer that was originally built with a liner with a cork insert needs to be replaced, you will need to use the cork and mounting plate assembly as a replacement. The field service replacement PN is 14112521S. This assembly includes the cork mounted on the mounting plate as well as the gasket and rivets required to install them. Units that only need a gasket replacement can retain the existing liner and replace only the gasket.

Q: Can I use Chart Connect 3000 with a TEC 3000 controller? What about using the TEC Connect program with a TEC 2000?

A: Both Chart Connect 3000 and TEC connect are compatible with TEC 2000 and TEC 3000's controllers. TEC Connect is the currently supported MVE controller interface and has increased functionality over Chart Connect 3000.

Q: The hot gas bypass temperature is not decreasing on a freezer that has just started filling, what should I do?

A: First verify that the supply source is connected properly and all supply valves are open. Verify that the gas bypass is enabled in the TEC 3000 menus, the bypass temperature set point is at a reasonable value (default value is -70 °C) and the gas bypass temperature probe is connected to the controller wiring harness (if the probe is not

connected the bypass temperature will read "OPEN").

ACCESSORIES

Transfer Hose for Manual Discharge Device

As an alternative to the standard rigid spout on the manual discharge device, Chart offers a flexible, stainless steel transfer hose with either a small or large phase separator. The hose is 2 feet long with ¼ inch diameter threads.



Transfer Hose for Discharge Device

Size	Part Number
Small	14044143
Large	14044151



Stainless Steel Transfer Hose in Use

Upcoming Events

Trade Shows

We will be present at the following trade shows and would love to see you at our booth!

EBMT
March 22-25

Istanbul, Turkey
Booth # B18

AACR
Philadelphia, PA
Booth #2317

ISBER
Phoenix, AZ
Booth # 417 and 419

Contact Us

For ordering information contact Customer Service:

United Kingdom	+44 (0) 1189 367060
France	+33 (0) 05 61 42 94 11
Germany	+49 (0) 202 739 55429
Italy	+39 049 784 0142
	customerservice.europe@chartindustries.com
Australia/New Zealand	+61 2 9749 4333
	customerservice.australia@chartindustries.com
Asia/Pac Rim	770.721.7759
	csasia@chartindustries.com
The Americas	770.721.7759
US Toll Free	800.482.2473
	customerservice.usa@chartindustries.com

For technical information contact Technical Service:

United Kingdom	+44 (0) 1189 367060
France	+33 (0) 05 61 42 94 11
Germany	+49 (0) 202 739 55407
Italy	+39 049 644 498
	techservice.europe@chartindustries.com
Asia/Pac Rim	+61 2 9749 4333
	techservice.asia@chartindustries.com
The Americas	770.721.7759
	techservice.usa@chartindustries.com
US Toll Free	800.482.2473
	techservice.usa@chartindustries.com

www.chartindustries.com/Life-Sciences.com

[Forward email](#)



3/17/2015

MVE Chart March 2015 Tech Tips

This email was sent to amy.mcdurmon@chartindustries.com by amy.mcdurmon@chartindustries.com | [Update Profile/Email Address](#) | Rapid removal with [SafeUnsubscribe™](#) | [Privacy Policy](#).



Chart Industries | 2200 Airport Industrial Dr. | Ste. 500 | Ball Ground | GA | 30107
