

MOBILE HOSPITAL TRAILER

LIQUID OXYGEN MOBILE CUSTOMER STATION



Mobile Hospital Trailer

The Mobile Hospital Trailer is designed to provide an uninterrupted supply of liquid oxygen (LOX) to a hospital. The trailer is ideal for hospitals that are switching over to a new LOX system due to construction, change of gas supplier, or maintenance of current LOX equipment. The system is comprised of a primary horizontal 3,000 gallon bulk tank, reserve horizontal 900 gallon bulk tank, 3 circuit ambient vaporizer, pressure control manifold, as well as full LED lighting.

The mobile hospital is specifically designed to be a stand-alone unit that is compliant with NFPA 99. The mobile hospital trailer is pre-wired to a local alarm panel to provide signals to the main hospital on tank levels and outlet pressures. The mobile hospital has been designed around the ability to be filled from either the driver or curb side allowing versatility for parking scenarios.

PRODUCT HIGHLIGHTS

- Drop & Go design allows for quick startup for a backup solution to a hospital
- Pre-wired local alarm panel allows for quick connection to master alarm panel signals
- 2500 SCFH ambient vaporizer allows for minimal maintenance and adequate flow for most hospital applications
- Automatic vaporizer switching allows for defrost of primary vaporizer (powered by control panel)
- Curb and driver side fill connections allow for versatility in parking scenarios
- Comes with (4) 20' flex hoses for connection to the hospital's emergency supply connection
- Equipped with (2) maintenance tool boxes for organization of tools and adapters
- Comes with (3) 4' x 4' square aluminum spill aprons for filling over asphalt



Innovation. Experience. Performance. ®

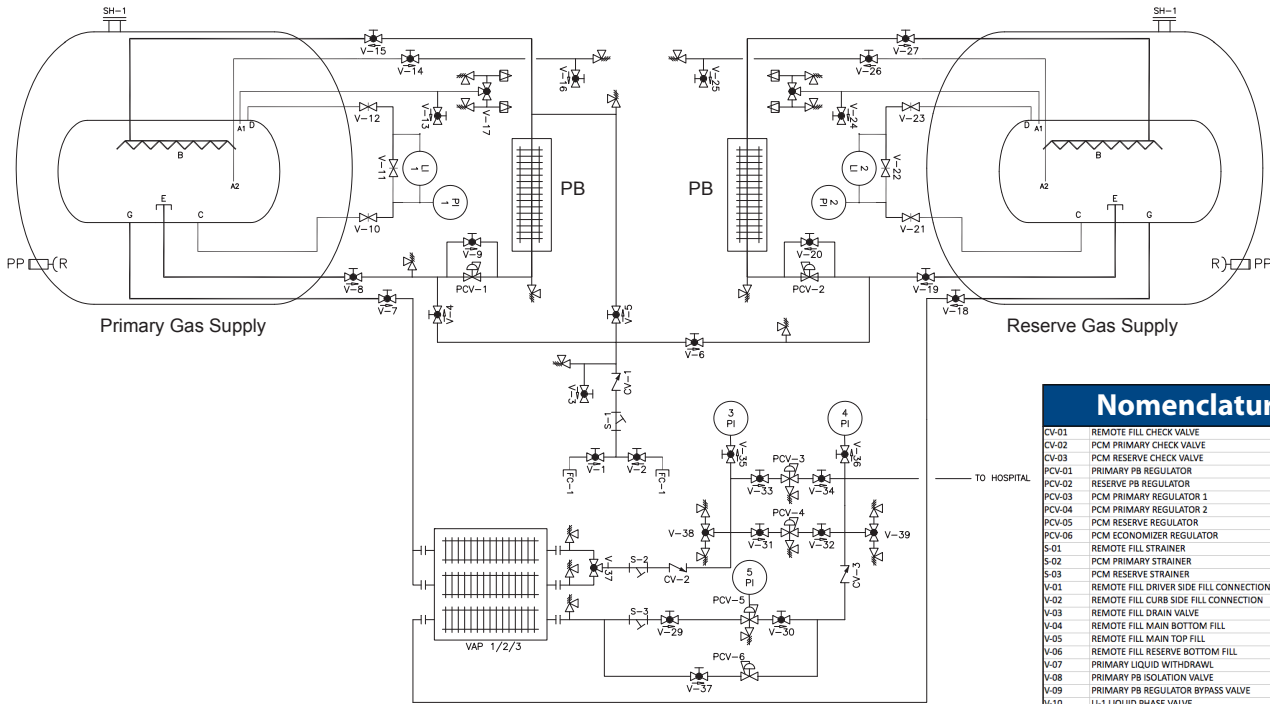
MOBILE HOSPITAL TRAILER

LIQUID OXYGEN MOBILE CUSTOMER STATION

SPECIFICATIONS	
Primary Vessel Capacity (at Full Trycock)	3,030 gallons / 348,750 ft ³
Primary Vessel (MAWP)	175 psig
Reserve Vessel Capacity (at Full Trycock)	850 gallons / 97,800 ft ³
Reserve Vessel (MAWP)	250 psig
Flow	2500 SCFH* – continuous vaporizer switching every 8 hrs
Length (overall)	44 ft 10 in
Width (overall)	8 ft 6 in
Height (overall)	12 ft 10 in
Weight (tare)**	32,110 lbs (w/ trailer)
Power Requirements	Control/Alarm Panel: 120V/60hz/1ph – 15A
Design Codes	NFPA 99 ASME Section VIII Division 1

* SCFH = Standard Cubic Feet per Hour

** Unit cannot be transported with liquid, must be empty.



Nomenclature	
CV-01	REMOTE FILL CHECK VALVE
CV-02	PCM PRIMARY CHECK VALVE
CV-03	PCM RESERVE CHECK VALVE
PCV-01	PRIMARY PB REGULATOR
PCV-02	RESERVE PB REGULATOR
PCV-03	PCM PRIMARY REGULATOR 1
PCV-04	PCM PRIMARY REGULATOR 2
PCV-05	PCM RESERVE REGULATOR
PCV-06	PCM ECONOMIZER REGULATOR
S-01	REMOTE FILL STRAINER
S-02	PCM PRIMARY STRAINER
S-03	PCM RESERVE STRAINER
V-01	REMOTE FILL DRIVER SIDE FILL CONNECTION
V-02	REMOTE FILL CURB SIDE FILL CONNECTION
V-03	REMOTE FILL DRAIN VALVE
V-04	REMOTE FILL MAIN BOTTOM FILL
V-05	REMOTE FILL MAIN TOP FILL
V-06	REMOTE FILL RESERVE BOTTOM FILL
V-07	PRIMARY LIQUID WITHDRAWAL
V-08	PRIMARY PB ISOLATION VALVE
V-09	PRIMARY PB REGULATOR BYPASS VALVE
V-10	LI-1 LIQUID PHASE VALVE
V-11	LI-1 EQUALIZATION VALVE
V-12	LI-1 VAPOR PHASE VALVE
V-13	PRIMARY MANUAL VENT VALVE
V-14	PRIMARY FULL TRYCOCK VALVE
V-15	PRIMARY PB RETURN ISOLATION VALVE
V-16	REMOTE FILL PRIMARY TRYCOCK VALVE
V-17	PRIMARY SAFETY DIVERTER VALVE
V-18	RESERVE LIQUID WITHDRAWAL
V-19	RESERVE PB ISOLATION VALVE
V-20	RESERVE PB REGULATOR BYPASS VALVE
V-21	LI-2 LIQUID PHASE VALVE
V-22	LI-2 EQUALIZATION VALVE
V-23	LI-2 VAPOR PHASE VALVE
V-24	RESERVE MANUAL VENT VALVE
V-25	REMOTE FILL RESERVE TRYCOCK VALVE
V-26	RESERVE FULL TRYCOCK VALVE
V-27	RESERVE PB RETURN ISOLATION VALVE
V-29	PCM RESERVE REGULATOR UPSTREAM ISOLATION VALVE
V-30	PCM RESERVE REGULATOR DOWNSTREAM ISOLATION VALVE
V-31	PCM PRIMARY REGULATOR 1 UPSTREAM ISOLATION VALVE
V-32	PCM PRIMARY REGULATOR 1 DOWNSTREAM ISOLATION VALVE
V-33	PCM PRIMARY REGULATOR 2 UPSTREAM ISOLATION VALVE
V-34	PCM PRIMARY REGULATOR 2 DOWNSTREAM ISOLATION VALVE
V-35	PI-3 ISOLATION VALVE
V-36	PI-4 ISOLATION VALVE
V-37	VAPORIZER SWITCH DIVERTER VALVE
V-38	PCM SAFETY DIVERTER VALVE 1
V-39	PCM SAFETY DIVERTER VALVE 2
V-40	FINAL LINE ECONOMIZER ISOLATION VALVE

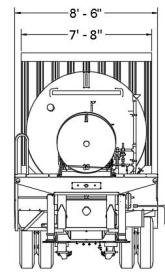
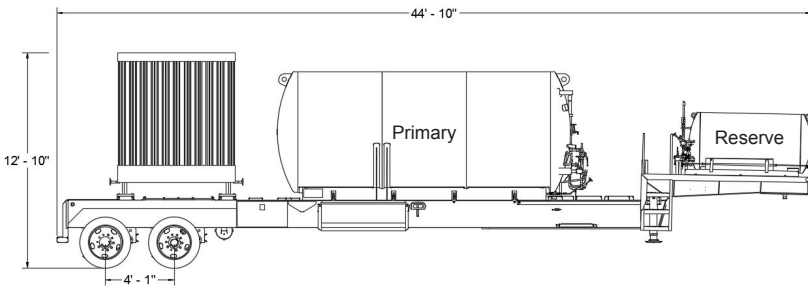


Chart Inc.
U.S. : 1-800-400-4683
Worldwide: 1-952-758-4484



©2016 Chart Inc.
PN 21093039
www.chartindustries.com