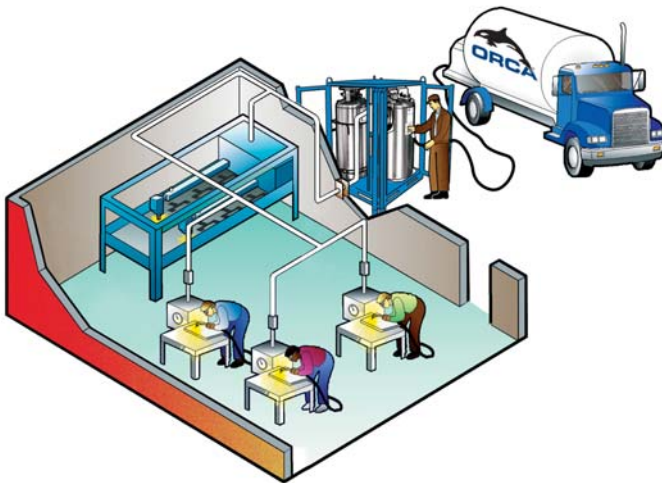


# MIXED GAS SKID

## MICROBULK GAS BLENDING SYSTEM

Chart's improved Mixed Gas Skid is a prefabricated blending system that provides a reliable source of high-precision mixed gas in a safe and secure package. The system includes options that make it flexible and capable of handling a wide range of gas blends required in welding and other applications. The Mixed Gas System's design simplicity provides higher interconnecting piping integrity, faster start up time, and reduced installation costs. This system also features all the advantages of Chart's MicroBulk Solutions.™



### PRODUCT HIGHLIGHTS

- Provides a turnkey solution: two vessels, pressure control manifolds, a mixer, and an emergency HP cylinder mixed gas reserve (HP bottles not included)
- Prefabricated system reduces installation time and costs
- On-site filling using the Orca™ MicroBulk Delivery System
- Two standard size skid packages to select from
- Transported by pallet jack, forklift or overhead crane
- Thermco® world class mixer provides high quality and proven reliability
- Gas mixer supports two gas sources and a mixed gas output of 0-50% CO<sub>2</sub> in argon
- Provides a regulated source of pure argon gas
- Excellent solution for emergency back-up or temporary requirements
- Gas connection ½" FPT



# MIXED GAS SKID

## MICROBULK GAS BLENDING SYSTEM

The mixed gas skid is offered in two sizes with both consisting of a primary and a secondary gas supply, regulating manifolds, and a mixer all installed and connected for immediate installation.

### SKID PACKAGES

Skid Package	Skid Dimensions/Weight	Primary Gas Source	Second Gas Source	Emergency Back Up	Materials
Small Skid	72" L x 72" W x 93" H 183 cm x 183 cm x 236 cm 900 lbs. (409 Kg)	Perma-Cyl® 450 HP DOT	Perma-Cyl® 230 HP RB	4 Bottle High-Pressure Manifold (HP bottles not included)	Welded steel powder coated painted frame
Large Skid	84" L x 95" W x 93" H 213 cm x 241 cm x 236 cm 1200 lbs. (545 Kg)	Perma-Cyl® 1000 HP	Perma-Cyl® 450 HP DOT	8 Bottle High-Pressure Manifold (HP bottles not included)	Welded steel powder coated painted frame

Other Gas Combinations available upon request including tri-mixes. Option without Thermco mixer available upon request.

### MIXER\* Thermco® Model 8500 CA50X1100

Model	Range	Flow Capacity	Accuracy
8500 CA50X1100	0-50% CO <sub>2</sub> in Argon	0-750 SCFH (0-20.1 Nm <sup>3</sup> /h)	+/- 1.5% CO <sub>2</sub>

**Ambient and Supply Gas Operating Temperatures**  
32°F (0°C) to 104°F (40°C)

**Supply Gas Pressure**  
100-125 PSIG (6.9-8.6 barg)

**Mixed Gas Outlet Pressure**  
10-50 PSIG (0.7-3.4 barg). Regulator provided by Thermco® in mixer for mixed gas pressure adjustment.

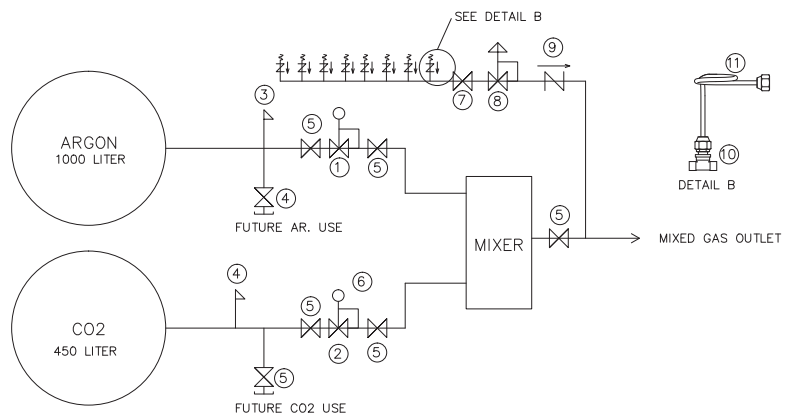
**Surge Tank**  
5 gallon, ASME coded and CRN registered, pressure relief valve provided.

**Power Requirements**  
115 VAC, 50/60 Hz, 0.5 amp. Acceptable voltage range 104-126 VAC.

**Weight**  
Net 65 lbs. (29.5 kg)

**Dimensions**  
19.1" (49 cm) L x 10.25" (26 cm) W x 27.5" (70 cm) H

1 - (1) 1/2" Victor HPL700/400/8F/8F Regulator W/ 0-400 PSI GAUGE
2 - (1) 1/2" Rego 1784BE 40-110 Regulator
3 - (1) 1/2" Rego PRV9434500 500 psi Safety
4 - (1) 1/2" Rego PRV9434350 350 psi Safety
5 - (7) 1/2" Apollo Union End Ball Valve
6 - (1) 1/4" x 2" 0-400 psi Gauge\VP
7 - (1) GMV -1580 MANIFOLD VALVE
8 - (1) VICTOR SR450D REGULATOR
9 - (1) 1/2" UNITED CHECK VALVE
10 - (4) A-603CU MANIFOLD CHECK VALVE
11 - (4) PT-4580 SINGLE LOOPED PIGTAILS



Your Local Representative



Innovation. Experience. Performance.™

©2015 Chart Inc.

Chart Inc.  
U.S.: 1-800-400-4683  
Worldwide: 1-952-758-4484  
www.chartindustries.com  
P/N 20875623