

LNG MOBILE REGASIFICATION TRAILER

DRILL RIG MOBILE CUSTOMER STATION



LNG Mobile Regasification Trailer

The LNG Mobile Regasification Trailer is designed to provide an uninterrupted supply of natural gas to power generator sets used on Oil & Gas drill rigs. The system is comprised of a 15,000 gallon LNG tanker trailer with integrated vaporization, flow control and offloading pump – all ruggedized and designed for extreme environments.

The large storage capacity of the LNG Mobile Regasification Trailer accepts deliveries of full tanker loads, minimizing delivered LNG costs. A high capacity offload pump is strategically located to allow flexibility of offloading on either side of the system. Integral to the system is an electrically heated direct to process vaporizer and pressure builder, designed for all weather and adverse climate conditions. When the job is complete, the LNG Mobile Regasification Trailer can be transported to another drill site while maintaining a minimum amount of LNG on board.

PRODUCT HIGHLIGHTS

- Minimize LNG costs by receiving full tanker load deliveries of LNG with the Mobile Regasification Trailer's large 15,000 gallon capacity.
- Deploy the system anywhere you need. The all weather, all climate electric vaporizer & pressure builder operate independent of ambient conditions.
- Handle a wide range of gas flows with ease. The high flow gas delivery system provides flows ranging from 31,500 to 50,000 SCFH with pressures up to 100 PSIG.
- You will operate uninterrupted, even when refilling. The integral high capacity pump accepts tanker deliveries quickly without dropping the LNG Mobile Regasification Trailer's pressure.



Innovation. Experience. Performance. ®

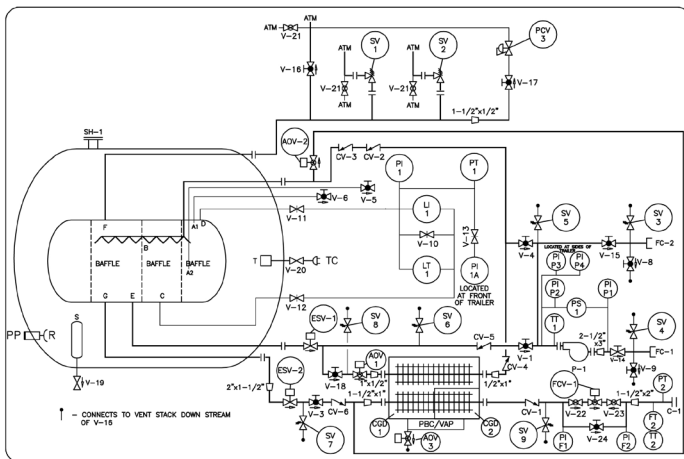
LNG MOBILE REGASIFICATION TRAILER

DRILL RIG MOBILE CUSTOMER STATION

SPECIFICATIONS	
Vaporizer Performance (2 Options)	150 kW unit with operating flow of 31,500 SCFH / 380 GPH* 280 kW unit with operating flow of 50,000 SCFH / 600 GPH
Water Capacity	15,000 gal / 56,700 ltr
Stationary LNG Capacity (at Full Trycock)	13,520 gal / 51,180 ltr
Transportable LNG Capacity (at DOT Trycock)	3,330 gal / 12,600 ltr
Maximum Allowable Working Pressure	140 psig / 9.7 bar
Flow	Up to 50,000 SCFH** gas at 50°F
Length (overall)	55 ft / 16.8 m
Width (overall)	8 ft 6 in / 2.6 m
Height (overall)	12 ft 8 in / 3.9 m
Weight (tare)	50,000 lbs / 22,680 kg
Power Requirements	Control Panel: 480V / 60 Hz / 3Ph 5 amps Pump: 480V / 60Hz / 3Ph 12 amps Electric Vaporizer/PB: 480V / 60 Hz / 3Ph
Design Codes	NFPA 59A ASME Section VIII Division 1 USDOT MC-338

* GPH = Gallons Per Hour

** SCFH = Standard Cubic Feet per Hour



Nomenclature

V-1	Bottom Fill Valve	CV-2	Top Fill Check Valve #1
V-3	Liquid Withdrawal Valve	CV-3	Top Fill Check Valve #2
V-4	Top Fill Valve	SV-1	Safety Relief Valve
V-5	Transport Trycock Valve	PCV-1	PB Regulator
V-6	15325 Gal Trycock Valve	PCV-2	Economizer Regulator
V-8	Hose Drain Valve	PCV-3	Road Relief Regulator
V-9	Hose Drain Valve	PCV-4	Final Line Regulator
V-10	LI-1 Equalizer Valve	SH-1	Jacket Safety
V-11	LI-1 Vapor Phase	PP	Pump Out Port
V-12	LI-1 Liquid Phase	TC	Vacuum Gauge Tube
V-13	Front Press. Gauge Iso.	PBC/VAP	Pressure Build Coil Vap
V-14	Pump Suction Valve	PI	Pressure Gauge
V-15	Vapor Cooldown Valve	PT	Pressure Transmitter
V-16	Vapor Vent Valve	LI	Contents Gauge
V-17	Road Relief Isolation	LT	Contents Transmitter
V-18	PB Isolation Valve	FT	Flow Transmitter
V-19	Tank Evacuation Valve	TCV-1	Temperature Control Valve
V-20	Tank Vacuum Gauge Valve	TT-1	Temperature Transmitter
V-21	Water Drain Valve (3)	FCV-1	Fire Control Valve
V-22	Regulator Inlet Iso Valve	FCV-2	Fire Control Valve
V-23	Regulator Outlet Iso Valve	P-1	Fill Pump
V-24	Regulator Bypass Valve	TT-1	Pump Temp. Transmitter
CV-1	PB Return Check Valve		

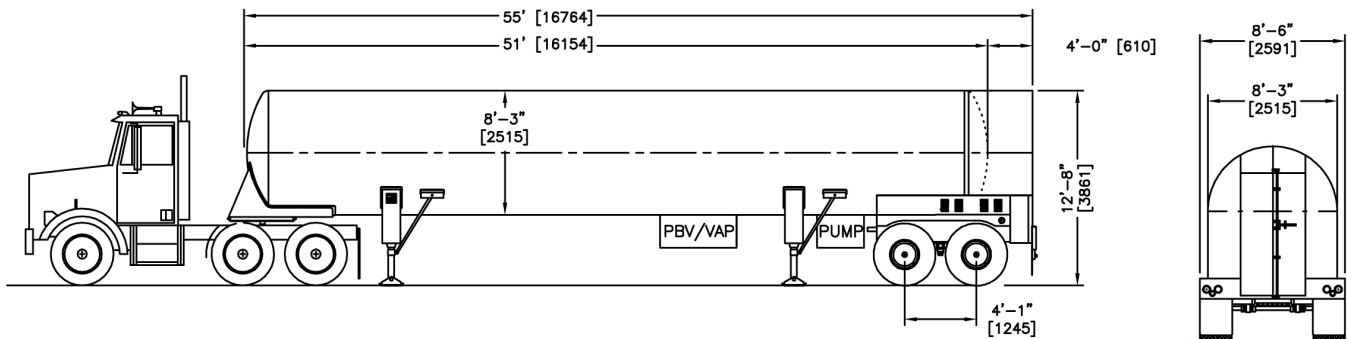


Chart Inc.
U.S. : 1-800-838-0856
Worldwide: 1-952-758-4484



©2014 Chart Inc.
PN 15089669
www.ChartLNG.com