

VS HIGH PRESSURE

HIGH PRESSURE BULK STORAGE

Chart's VS High Pressure Bulk Stations are engineered for superior performance in high pressure applications. To support these demands, the VS High Pressure Bulk Station comes standard with a larger pressure-building regulator and coil. For more demanding applications with higher withdrawal rates, a remote pressure-building system is available.

Advanced insulation technology provides longer holding times, and the continuing development of insulation systems has resulted in unsurpassed performance. Our Composite Super Insulation™ is a light-weight system offering superior performance compared to Perlite or Super-Insulation and is easier to maintain, offering longer product hold times.

The standard 400 psig (27.6 bar) tank is available in 900 - 15,000 gallon (3,218 - 57,008 liters) models, and the standard 500 psig (34.5 bar) tank is available in 900 - 6,000 gallon (3,218 - 21,842 liter) models. Other sizes of both models are available upon request.

PRODUCT HIGHLIGHTS

- All welded stainless steel piping modules
- Heavy duty bronze valves with extended bonnets
- Valve bonnet uniformity to reduce spare parts inventory
- Highest grade components for low to zero maintenance
- Separate pressure building and economizer regulators are standard on all 400 and 500 psig (27.6 and 34.5 barg) models
- High performance safety system with dual relief valves and rupture disks supplied as a standard
- Inner vessel designed and built to ASME Section VIII Division 1 code



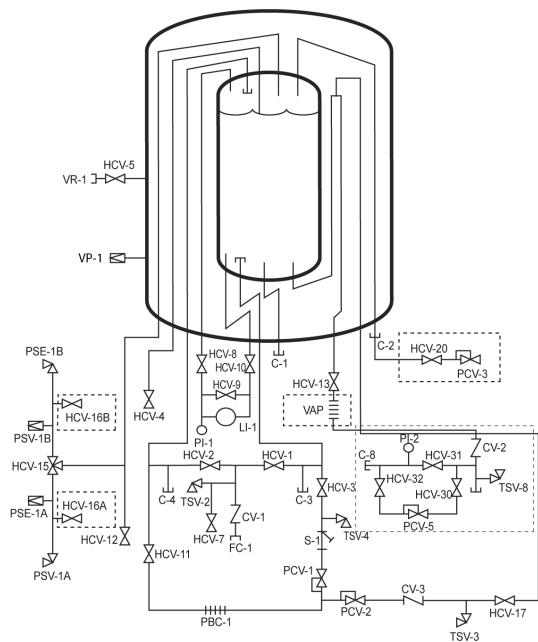
Innovation. Experience. Performance. [®]

VS HIGH PRESSURE

HIGH PRESSURE BULK STORAGE

Model	Gross Capacity		Net Capacity		MAWP*		Flow Capacity**		Diameter		Height		Weight***		NER %/day	
	Gal	Liters	Gal	Liters	psig	bar	SCFH	Nm ³ /hr	in	mm	in	mm	lbs	Kg	in O ₂ / Ar	in N ₂
VS-900SC	940	3,558	850	3,218	400 500	27.6 34.5	5,200 3,100	137 82	66	1,676	136	3,454	5,100 5,800	2,313 2,631	.45	.73
VS-1500SC	1,640	6,208	1,580	5,981	400 500	27.6 34.5	5,900 3,600	155 97	66	1,676	196	4,978	7,600 8,700	3,447 3,946	.35	.56
VS-3000SC	3,150	11,924	3,030	11,470	400 500	27.6 34.5	6,400 3,800	168 100	86	2,184	228	5,791	15,100 15,100	6,849 6,849	.25	.40
VS-6000SC	6,010	22,750	5,770	21,842	400 500	27.6 34.5	7,900 4,700	208 124	86	2,184	383	9,728	27,000 27,100	12,247 12,292	.15	.24
VS-9000SC	9,360	35,431	8,990	34,031	400	27.6	7,500	197	114	2,896	348	8,840	38,900	17,645	.10	.16
VS-11000SC	11,410	43,192	10,960	41,488	400	27.6	8,100	213	114	2,896	407	10,338	46,700	21,183	.10	.16
VS-13000SC	13,470	50,989	13,060	49,437	400	27.6	8,600	226	114	2,896	466	11,837	55,100	24,993	.10	.16
VS-15000SC	15,520	58,750	15,060	57,008	400	27.6	14,400	378	114	2,896	525	13,335	63,400	28,758	.10	.16

* MAWP - Maximum Allowable Working Pressure. ** Flow capacity rating down to a 20% contents level with a maximum fall off in tank operating pressure of 15 psi (1 bar).
 ***Weights are for ASME design. (NER) = Nominal Evaporation Rate



Dashed lines indicate optional equipment.

Nomenclature

C-1	Connection, Aux Liquid	HCV-32	Valve, Outlet Houseline
C-2	Connection, Aux Vapor	LI-1	Level Indicator, Inner Vessel
C-3	Connection, Secondary Aux Liq	PBC-1	Pressure Building Coil, Inner Vessel
C-4	Connection, Secondary Aux Vapor	PCV-1	Pressure Control Valve, Inner Vessel
C-8	Connection, Customer Houseline	PCV-2	Pressure Control Valve, Economizer
CV-1	Check Valve, Fill	PCV-3	Pressure Control Valve, Econo Vent
CV-2	Check Valve, Houseline	PCV-5	Pressure Control Valve, Houseline
CV-3	Check Valve, Economizer	PI-1	Pressure Indicator, Inner Vessel
FC-1	Connection Fill	PI-2	Pressure Indicator, Houseline
HCV-1	Valve, Bottom Fill	PSE-1A	Pressure Safety Element, Inner Vessel
HCV-2	Valve, Top Fill	PSE-1B	Pressure Safety Element, Inner Vessel
HCV-3	Valve, PB Inlet	PSE-3	Pressure Safety Element, Outer Vessel
HCV-4	Valve, Full Trycock	PSV-1A	Pressure Safety Valve, Inner Vessel
HCV-5	Valve, Vacuum Gauge Tube	PSV-1B	Pressure Safety Valve, Inner Vessel
HCV-7	Valve, Fill Line Drain	TSV-2	Thermal Safety Valve, Fill
HCV-8	Valve, LI-1 Vapor Phase	TSV-3	Thermal Safety Valve, PB Circuit
HCV-9	Valve, LI-1 Equalization	TSV-8	Thermal Safety Valve, Houseline
HCV-10	Valve, LI-1 Liquid Phase	VAP	Vaporizer Product Withdrawal
HCV-11	Valve, PB Outlet	VR-1	Vacuum Readout, Outer Vessel
HCV-12	Valve, Vapor Vent		
HCV-13	Valve, Vaporizer Inlet		
HCV-15	Valve, Safety Relief Selector		
HCV-16A	Valve, Test		
HCV-16B	Valve, Test		
HCV-17	Valve, Economizer		
HCV-20	Valve, Economizer Vent		
HCV-30	Valve, Inlet Houseline		
HCV-31	Valve, Bypass Houseline		
VP-1	Vacuum Port		

Chart Inc.
 U.S. : 1-800-400-4683
 Worldwide: 1-952-758-4484



Innovation. Experience. Performance.®

© 2015 Chart Inc.
 PN 14388384
 www.chartindustries.com