

MVE SERIES

BULK STORAGE SYSTEMS

MVE - The name that you remember and trust for the highest quality cryogenic bulk equipment in the world. The name has changed to Chart Inc., but we are still the same manufacturer that you have come to rely on for quality, performance and the best warranty in the industry.

Chart's MVE Series of vertical bulk storage systems are engineered for superior performance, durability and value. Equipped with our proprietary composite Super Insulation (a light-weight system offering better thermal performance than Perlite), the MVE Series provides reduced product losses and a slower rate of pressure rise during periods of non-use.

In each model size, the modular plumbing system has been selectively optimized to meet the flow requirements of a complete range of liquid or gas applications. Backing up this performance is a competitive two-year vacuum warranty.



PRODUCT ADVANTAGES

- Leg design provides better access to anchor bolts
- Lower tare weight reduces freight costs
- Long-life Hentzen urethane paint system with optional zinc-rich primer
- Plumbing built to ASME B31.3 code and leak tested at 1.1 times the MAWP



High performance safety system with dual relief valves and rupture disks supplied as optional



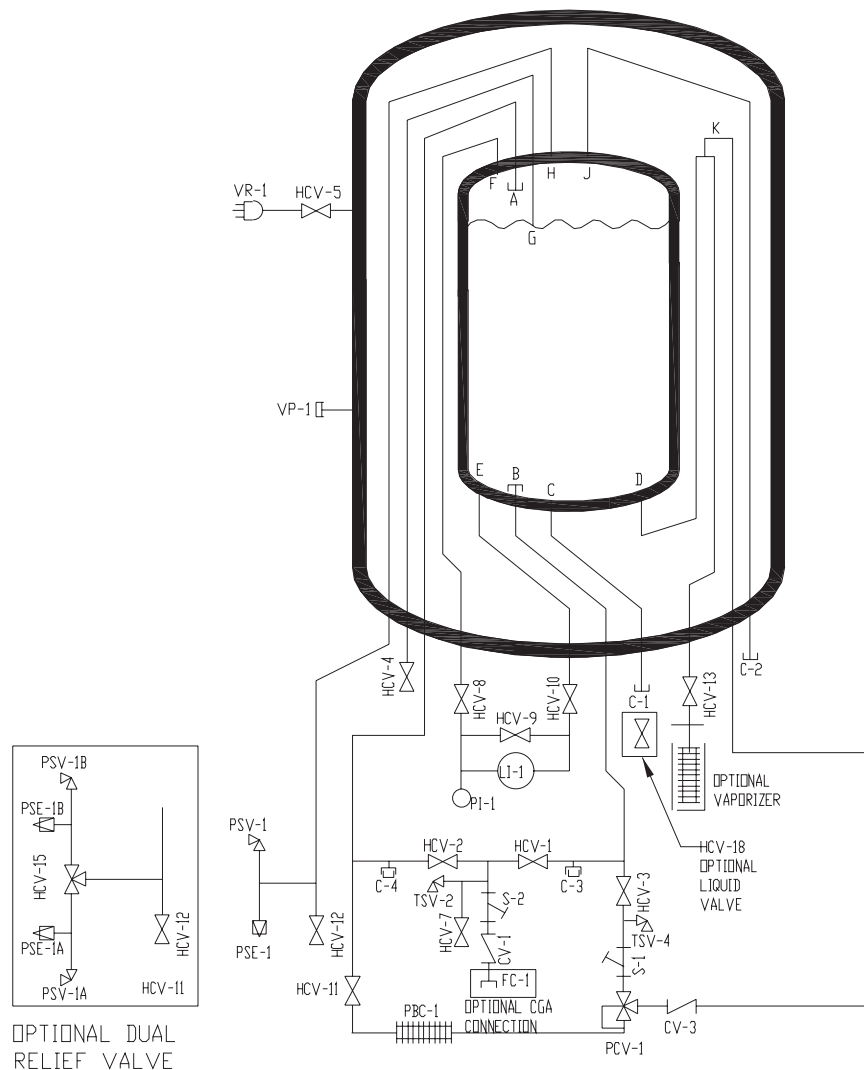
New, innovative Vertical Fin Pressure Building System improves performance, while reducing frost and ice build-up to further reduce your maintenance costs

MVE SERIES

BULK STORAGE SYSTEMS

Model	Gross Capacity		Net Capacity		MAWP*		Diameter		Height		Weight**		NER % /day in O ₂	Flow Capacity***	
	Gal	Liters	Gal	Liters	psig	bar	in	mm	in	mm	lbs	Kg		SCFH	nm ³ /hr
VS 2000L	570	2,158	510	1,931	250	17.2	66	1,676	105	2,667	3,300	1,497	.55	9,000	237
VS 3400L	940	3,558	850	3,218	250	17.2	66	1,676	136	2,354	4,400	1,996	.45	9,000	237
VS 5700L	1,640	6,208	1,580	5,981	250	17.2	66	1,676	196	4,978	6,100	2,767	.35	9,000	237
VS 11300L	3,150	11,924	3,030	11,470	250	17.2	86	2,184	228	5,791	12,600	5,715	.25	18,000	473
VS 22700L	6,010	22,780	5,700	22,842	250	17.2	86	2,184	383	9,728	21,300	9,662	.15	18,000	473

*MAWP - Maximum Allowable Working Pressure. **Weights are for ASME design. ***Flow capacity rating down to a 20% contents level with a maximum fall of in tank operating pressure of 15 psi (1 bar). (NER) = Nominal Evaporation Rate



Nomenclature	
C-1	Connection, aux liquid
C-2	Connection, aux vapor
C-3	Connection, secondary aux liquid
C-4	Connection, secondary aux vapor
CV-1	Fill line check valve
CV-3	Economizer check valve
HCV-1	Bottom fill valve
HCV-2	Top fill valve
HCV-3	PB inlet valve
HCV-4	Full trycock valve
HCV-5	Vacuum gauge tube valve
HCV-7	Fill line drain valve
HCV-8	LI-1 vapor phase valve
HCV-10	LI-1 liquid phase valve
HCV-11	PB outlet valve
HCV-12	Vapor vent valve
HCV-13	Product supply valve
PBC-1	Pressure build coil
PCV-1	Pressure control valve
PSE-1	Pressure safety element, inner
PSV-1	Pressure safety valve, inner
S-1	Strainer, pressure building
S-2	Strainer, fill
TSV-2	Fill line thermal relief
TSV-4	PB circuit thermal relief valve
VP-1	Vacuum port
VR-1	Vacuum readout
HCV-9	LI-1 equalization valve
LI-1	Inner vessel level indicator
PI-1	Inner vessel pressure indicator
Optional (Not Shown)	
FC-1	Fill connection
HCV-15	Safety relief selector valve
HCV-18	Aux liquid valve
PSE-1A	Pressure safety element, inner
PSE-2A	Pressure safety element, inner
PSV-1A	Pressure safety valve, inner
PSV-2A	Pressure safety valve, inner
VAP	Product withdrawal vaporizer

Chart Inc.
 U.S.: 1-800-400-4683
 Worldwide: 1-952-758-4484



©2010 Chart Inc.
 PN 13086018
 www.chart-ind.com